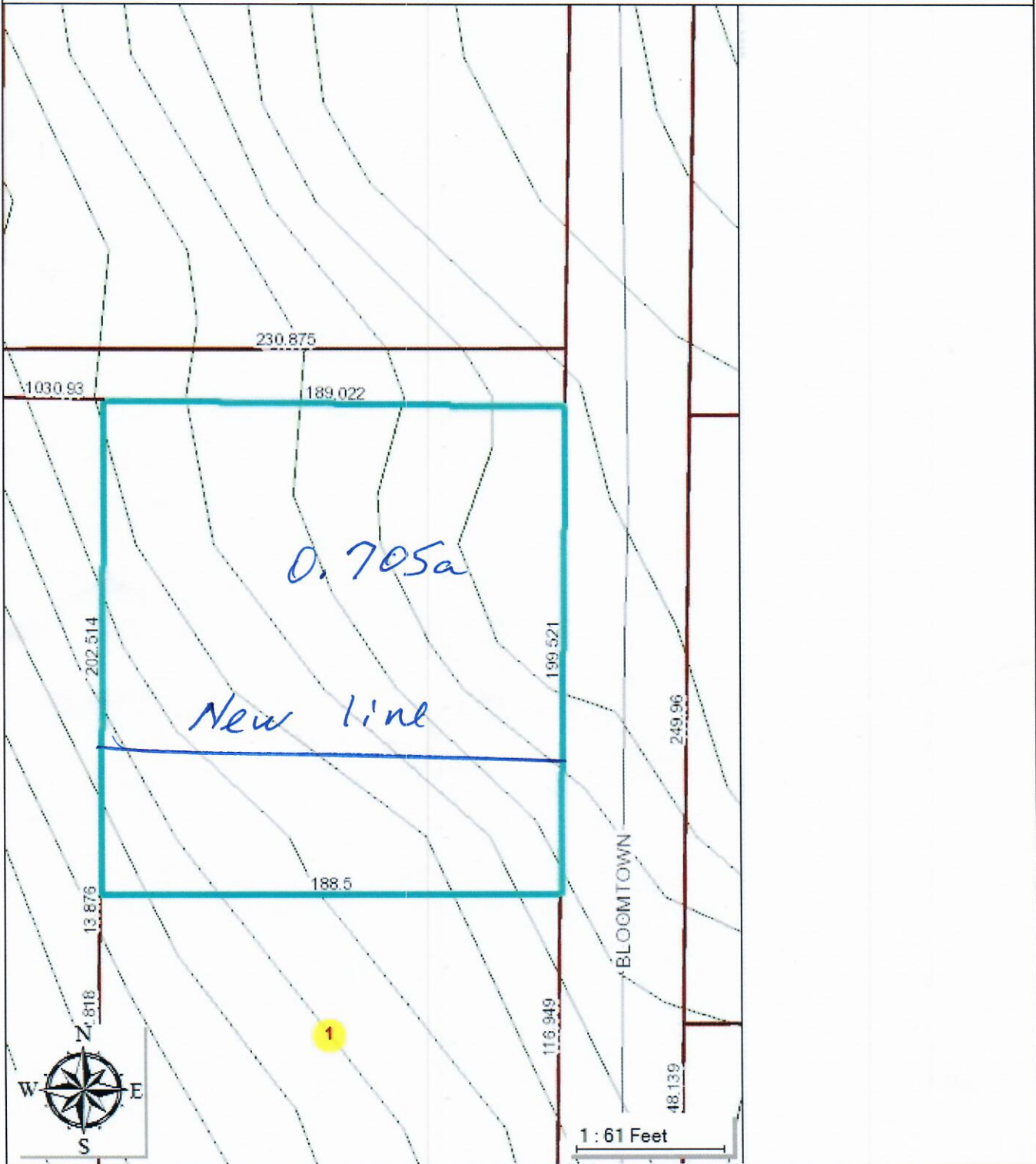


Lot



This information provided by the Yadkin County Government Website is a public service to the citizens of Yadkin County. The recipient may use this information with the understanding that Yadkin County makes no warranties, although every attempt will be made to ensure the information is accurate and timely. This web site is not intended to replace official sources and information should not be considered error-free or not be used as the exclusive basis for decision-making. The use of the information provided by this Web site is strictly voluntary and at the user's sole risk. Yadkin County assumes no responsibility or liability whatsoever associated with the use or misuse of this data.



This information provided by the Yadkin County Government Website is a public service to the citizens of Yadkin County. The recipient may use this information with the understanding that Yadkin County makes no warranties, although every attempt will be made to ensure the information is accurate and timely. This web site is not intended to replace official sources and information should not be considered error-free or not be used as the exclusive basis for decision-making. The use of the information provided by this Web site is strictly voluntary and at the user's sole risk. Yadkin County assumes no responsibility or liability whatsoever associated with the use or misuse of this data.

5/8" IRF

S 83°51'14"E 199.44'

5/8" IRF

169.73'

199'

29.71'

OLD ROAD

2

30752±

SF

Positive Alternative Radio, Inc.
db 890, pg. 31
plat bk 10, pg 190

199'

5/8" IRF

154'

154'

N 06°25'27"E 193.30'
154.40'

154.03'

S 06°28'31"W 186.70'

IRF

S 83°57'40"E 198.79'

UP

171.70'

Gravel Drive

27.59'

38.90'

132.67'

Old Line

1

31092±

SF

W Baker Family, LLC
db 492, pg. 5

N 06°24'48"E 119.99'

S 08°07'37"W 120.09'

170.44'

N 05°43'04"E 200.12'

200.12'

29.59'

SR 1569 a/k/a
Bloomtown