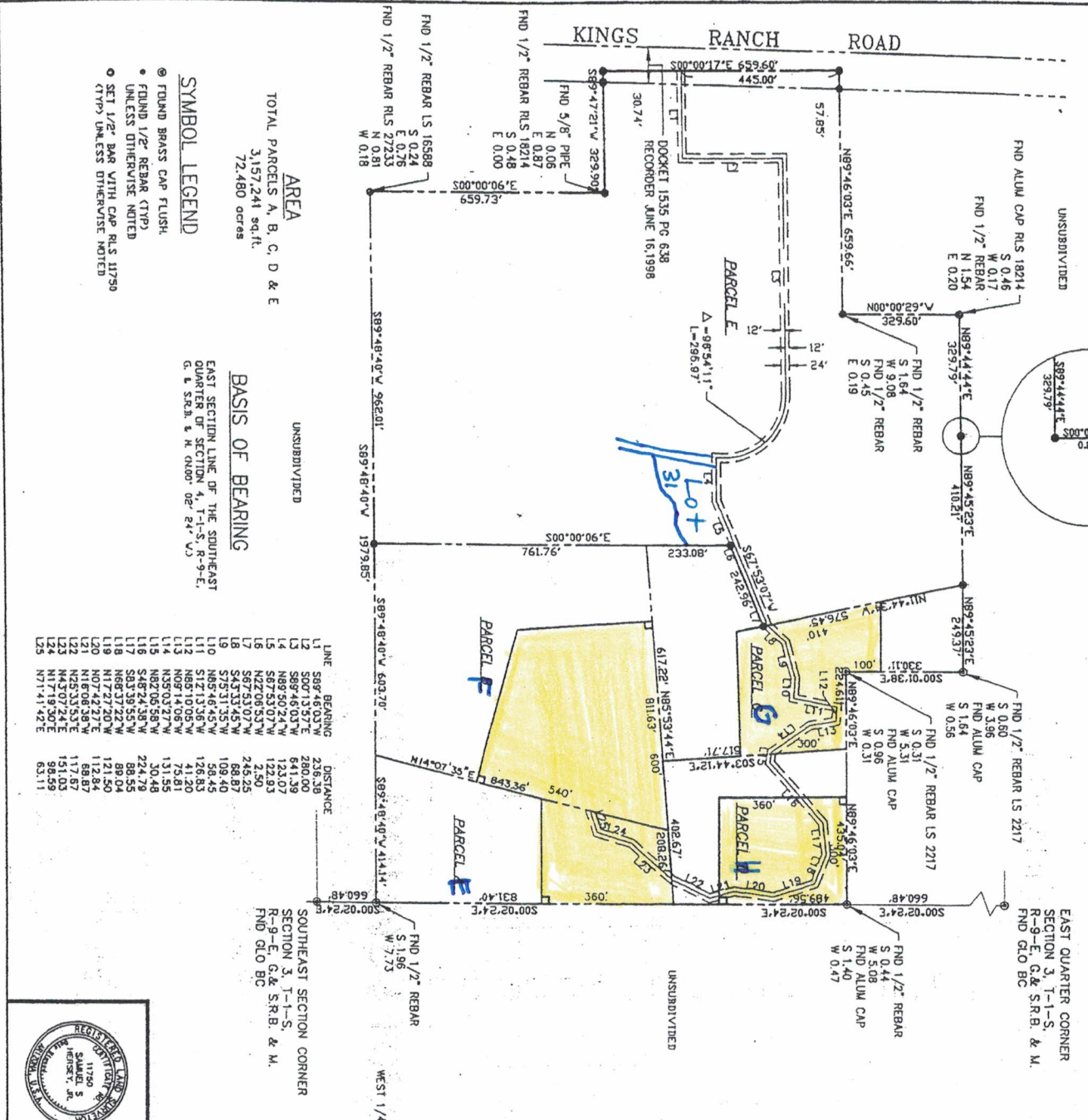


HOMESITE BOUNDARIES

A PORTION OF SECTION 4, T-1-S, R-9-E,
 GASPARA W. PINAL COUNTY, ARIZONA



AREA
 TOTAL PARCELS A, B, C, D & E
 3,157,244 sq.ft.
 72,480 acres

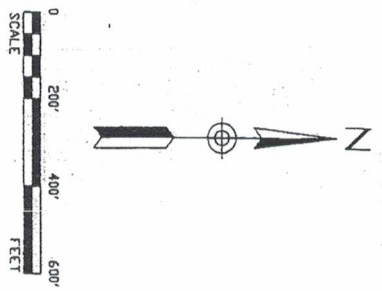
BASIS OF BEARING
 EAST SECTION LINE OF THE SOUTHEAST
 QUARTER OF SECTION 4, T-1-S, R-9-E,
 G. & S.R.B. & M. QNO-02-24-V-3

LINE	BEARING	DISTANCE
L1	S89°46'03"W	236.38
L2	S00°13'57"E	280.00
L3	S89°46'03"W	641.39
L4	N89°50'24"W	123.07
L5	N82°38'51"W	12.49
L6	S67°53'07"W	245.25
L7	S43°33'45"W	68.87
L8	S75°31'35"W	109.40
L9	N65°46'45"W	58.45
L10	N65°46'45"W	126.83
L11	S12°13'36"W	41.20
L12	N65°10'05"W	11.20
L13	N65°10'05"W	13.85
L14	N65°03'29"W	13.85
L15	N82°05'58"W	30.48
L16	S48°24'38"W	224.78
L17	S83°39'55"W	89.55
L18	N68°37'22"W	89.04
L19	N17°27'20"E	121.50
L20	N07°42'27"E	112.84
L21	N16°08'35"W	158.87
L22	N43°07'24"E	151.03
L23	N17°19'30"E	96.59
L24	N17°19'30"E	96.59
L25	N71°41'42"E	63.11

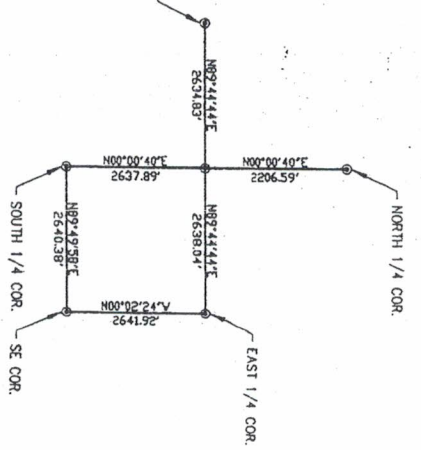
- SYMBOL LEGEND**
- FOUND BRASS CAP FLUSH
 - FOUND 1/2" REBAR (TYP)
 - UNLESS OTHERWISE NOTED
 - SET 1/2" BAR WITH CAP RLS 11750 (TYP) UNLESS OTHERWISE NOTED

SOUTHEAST SECTION CORNER
 SECTION 3, T-1-S,
 R-9-E, G & S.R.B. & M.
 FND GLO BC

EAST QUARTER CORNER
 SECTION 3, T-1-S,
 R-9-E, G & S.R.B. & M.
 FND GLO BC



DETAIL OF SE 1/4 OF SEC. 4, T1S, R9E



HOMESITE BOUNDARIES

DESIGN: N/A
 DRAWN: ACAD
 CHECK: SSH
 SCALE:
 HORIZ: 200'
 VERT: N/A