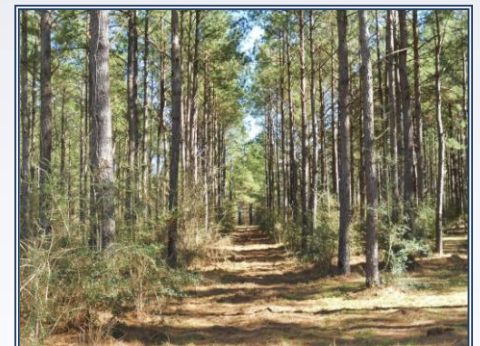
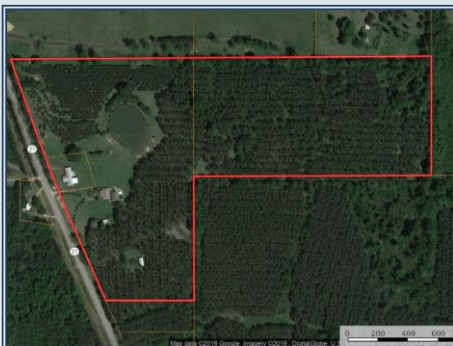




This turnkey property in Walthall County, MS is ready to enjoy or create a your commercial endeavor. It includes a furnished main house with 2460 SF Living Area- 3 BR/1BA with an open floor plan... plus a pool house with 1 BR/2BA and loft, all overlooking a stocked pond. The spacious lodge includes 3BR/3BA, living room with beautiful reclaimed wooden beams, wood burning fireplace, a game room and commercial kitchen. With approx 30 acres of 18y/o pines, 5 acres of 5 y/o pines and the remaining acreage open, this beautiful tract offers many recreational possibilities. Internal roads and food plots are in place. Also included is a large metal barn with a roll up door and a metal pole barn. Located on a paved road only 5.5 miles from Tylertown, access is easy!

667 Hwy 27 N, Tylertown

31.200766, -90.109497 GPS



43 Acres

MLS #128955

UC #23042-28955

\$499,000



Slade Priest

sladepriest1@gmail.com

Office: (601) 250-0017

Cell: (601) 888-0094

SouthernStatesRealty.com



Melissa Field

mfield3@bellsouth.net

Office: (601) 250-0017

Cell: (601) 467-7070

SouthernStatesRealty.com