



**Slade Priest**  
 sladepriest1@gmail.com  
 Office: (601) 250-0017  
 Cell: (601) 888-0094  
 SouthernStatesRealty.com



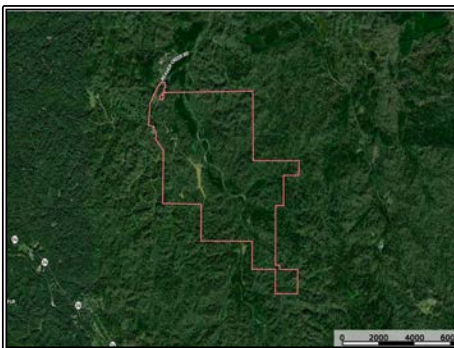
**Southern States Realty**



Only an hour from Baton Rouge and 35 minutes from Natchez, Beaver Creek Ranch offers 897± acres of unmatched natural beauty. The main home sits atop a hill overlooking a stocked 8-acre lake, featuring an open layout with 3 beds, 3 baths, historic finishes, and an outdoor kitchen. Nearby are four unique guest camps, providing comfortable accommodations for visitors. This property boasts excellent fishing, with a lake known for double-digit bass, and a rich habitat that supports trophy deer and thriving turkey populations. The internal road system leads to numerous food plots, hardwoods, and scenic views. Amenities include a cleaning station, a walk-in cooler, and approximately 70± acres of planted pines for wildlife diversity. Perfect for family gatherings or entertaining clients, Beaver Creek Ranch is a true legacy property. Contact us today to schedule a visit!

3200 Beaver Creek Road, Woodville, MS

31.164718, -90.372910 GPS



**\$5,400,000**

**897± Acres**  
**MLS #143489**



**#HUNTINGLANDMAN**