



JETT BLACKBURN
REAL ESTATE Inc.

Off FS Rd 2820

Burns, OR 97720

\$195,000

10 Mile Camp

160 Deeded Acres

Selling Oregon Farms & Ranches Since 1960

FOR SALE



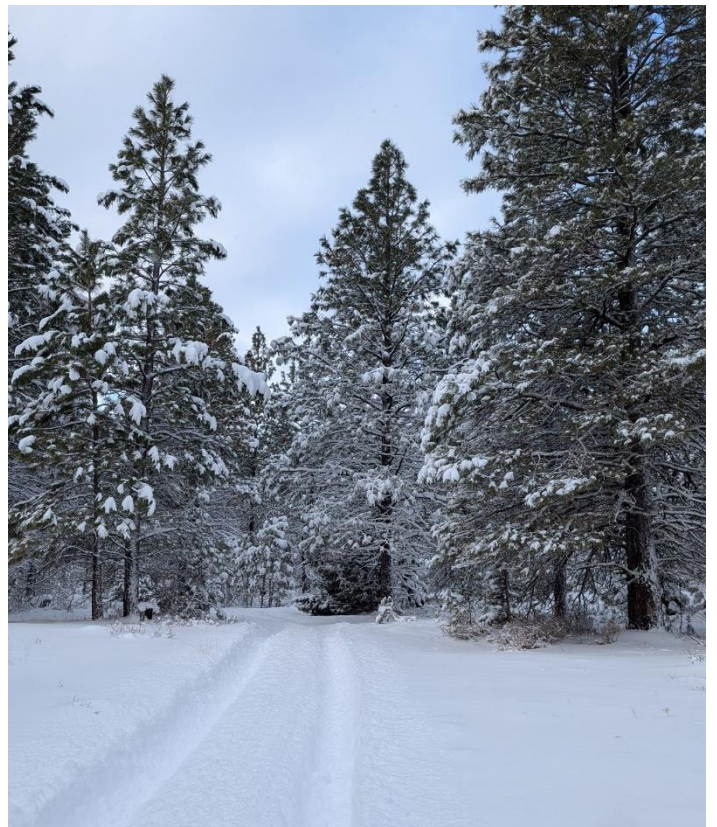
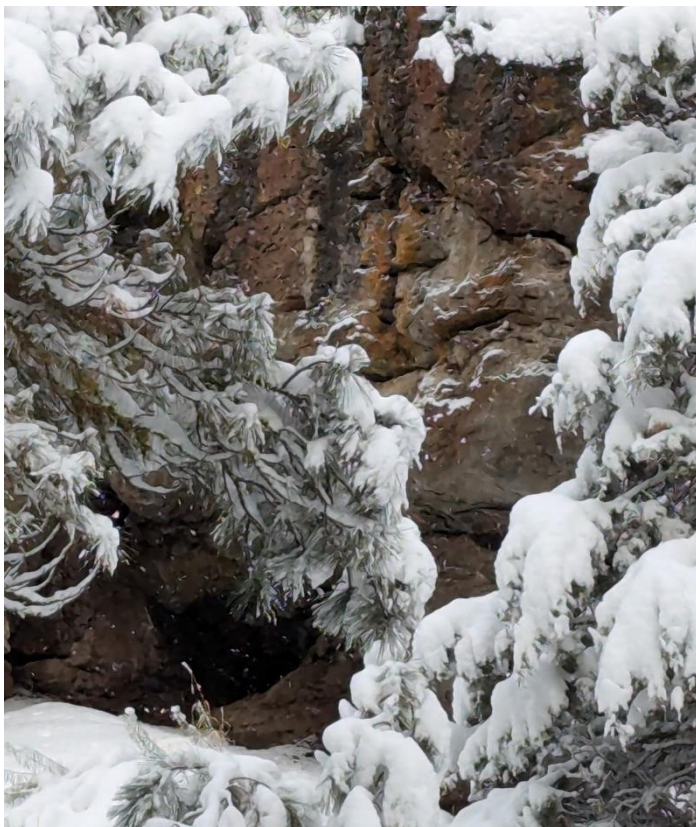
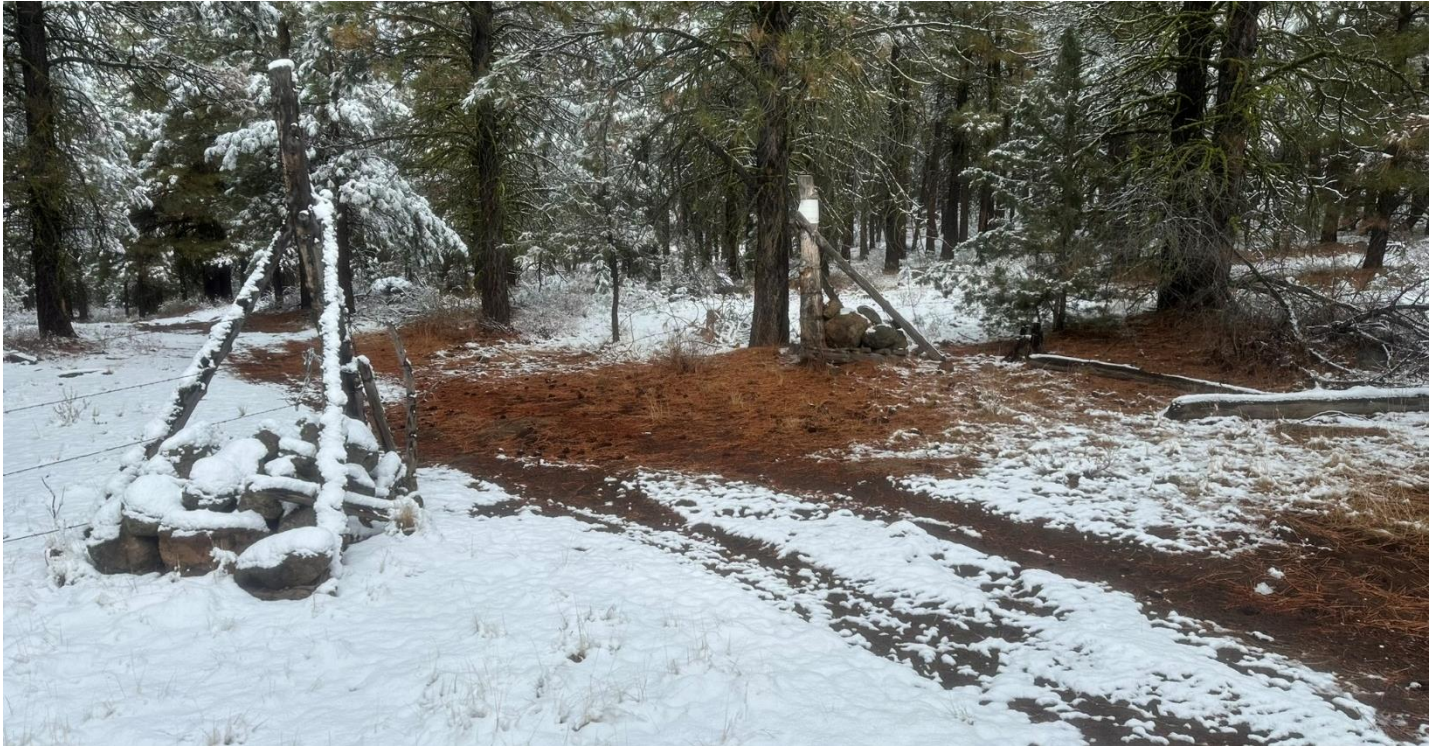
This beautiful, partially fenced recreational property offers a unique opportunity for outdoor enthusiasts and nature lovers. Located alongside Forest Service and BLM land, it provides direct access to thousands of acres of public land, perfect for hiking, hunting, or simply enjoying the great outdoors. The property's scenic location and vast surroundings make it an ideal retreat for those looking to escape into nature.

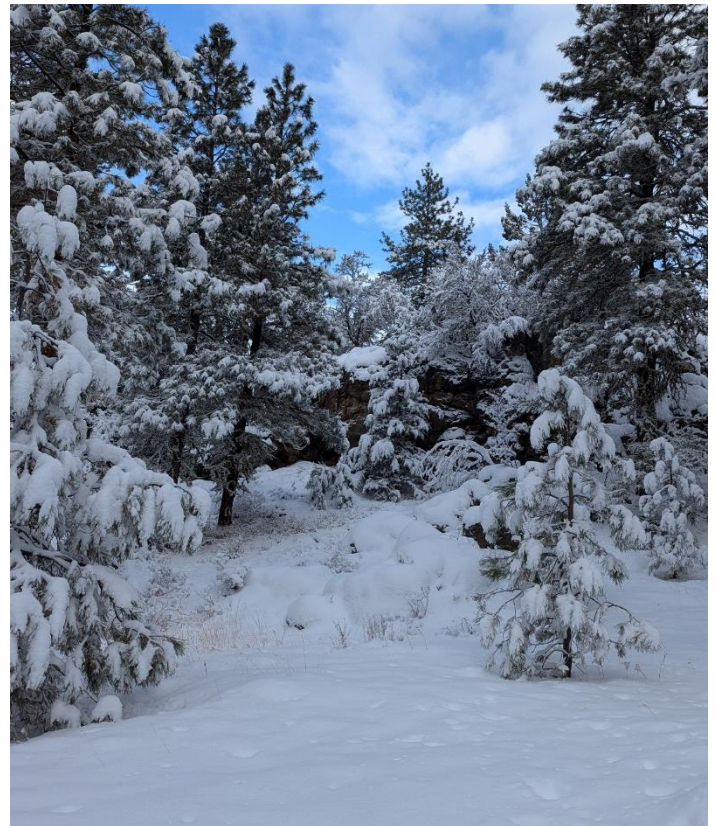
The land features a mix of timber and rock outcroppings, enhancing its aesthetic appeal. With its natural resources, it offers possibilities, whether for a private retreat, recreational activities, or conservation. Currently being grazed, the property can continue its existing use or be adapted to meet your vision.

As with any property, potential buyers will want to verify access options to ensure convenience and ease of use. Whether you're looking to have a getaway or invest in a piece of wilderness, this land offers opportunity.

With its serene location, this property is perfect for those seeking a recreational escape or a long-term investment in the outdoors. Don't miss the chance to own a piece of land with endless potential!

The seller and his agent makes these representations in good faith, from personal knowledge and experience. However, the buyer should inspect this property or cause this property to be inspected by knowledgeable persons so that the buyer may purchase without relying upon any representations made by the seller or his agent Also, unless otherwise specified, we, Jett Blackburn Real Estate, Inc. agents, represent the seller on any of our listings.







Surrounding Area

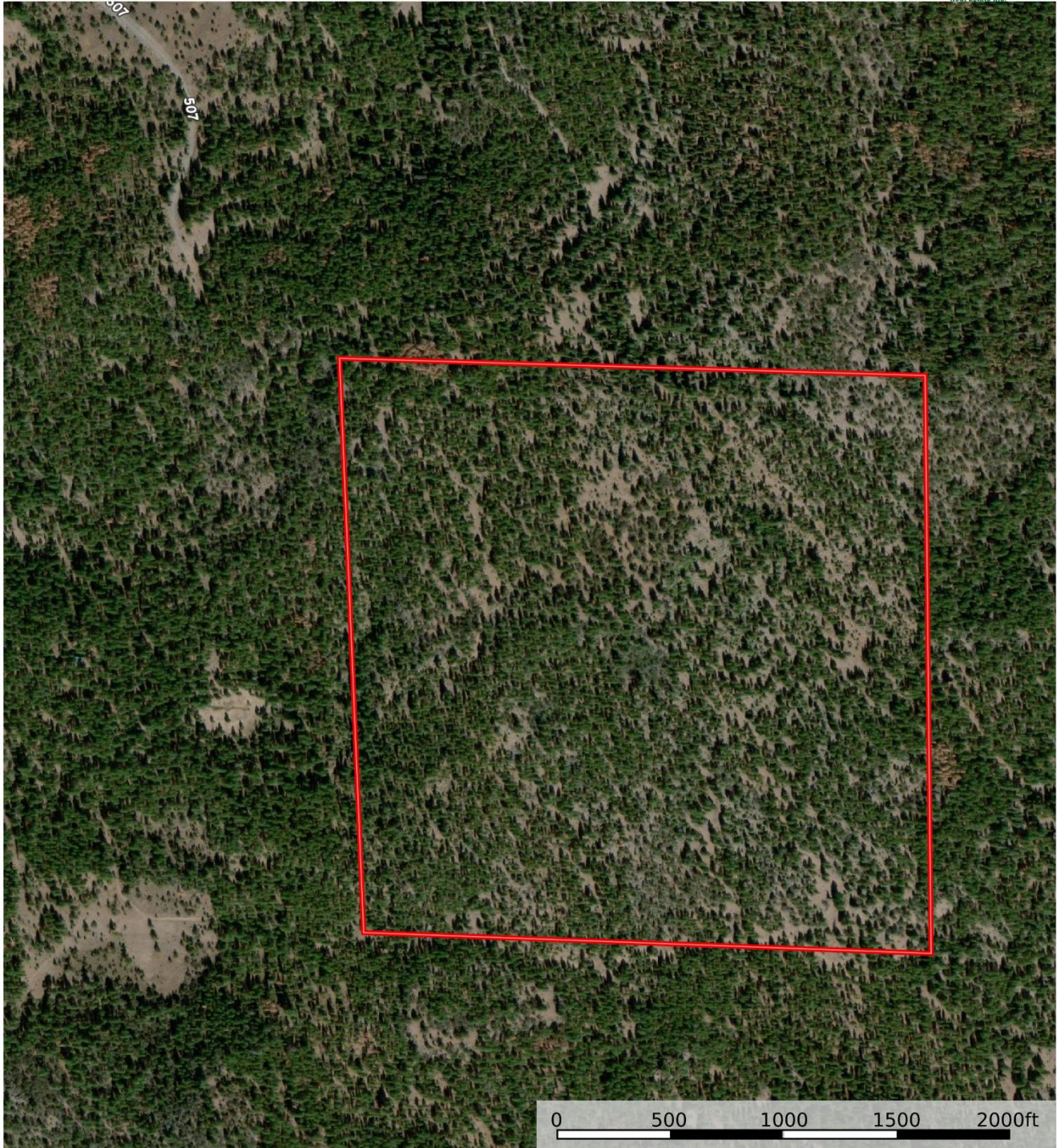
Harney County, located in the expansive high deserts of rural Eastern Oregon, ranks as the 10th largest county in the United States, encompassing over 10,000 square miles. This vast area boasts diverse landscapes and abundant wildlife. At the southern tip of the county, one can marvel at the stunning vistas of Steens Mountain, which oversees the Alvord Desert & Trout Creek Mountains. The northern region features the Malheur National Forest, Silvies River, & timber country.

Wildlife abounds, ranging from large game such as elk, pronghorn, & mule deer to a variety of smaller critters and bird species typical of the Pacific Northwest. The county's primary community, Burns, is situated midway between Central Oregon & the Idaho Border. A two-hour trip to the west leads to Bend, while two hours east reaches the Idaho border and the Treasure Valley.






160 acres - Arntz
Oregon, 160 AC +/-



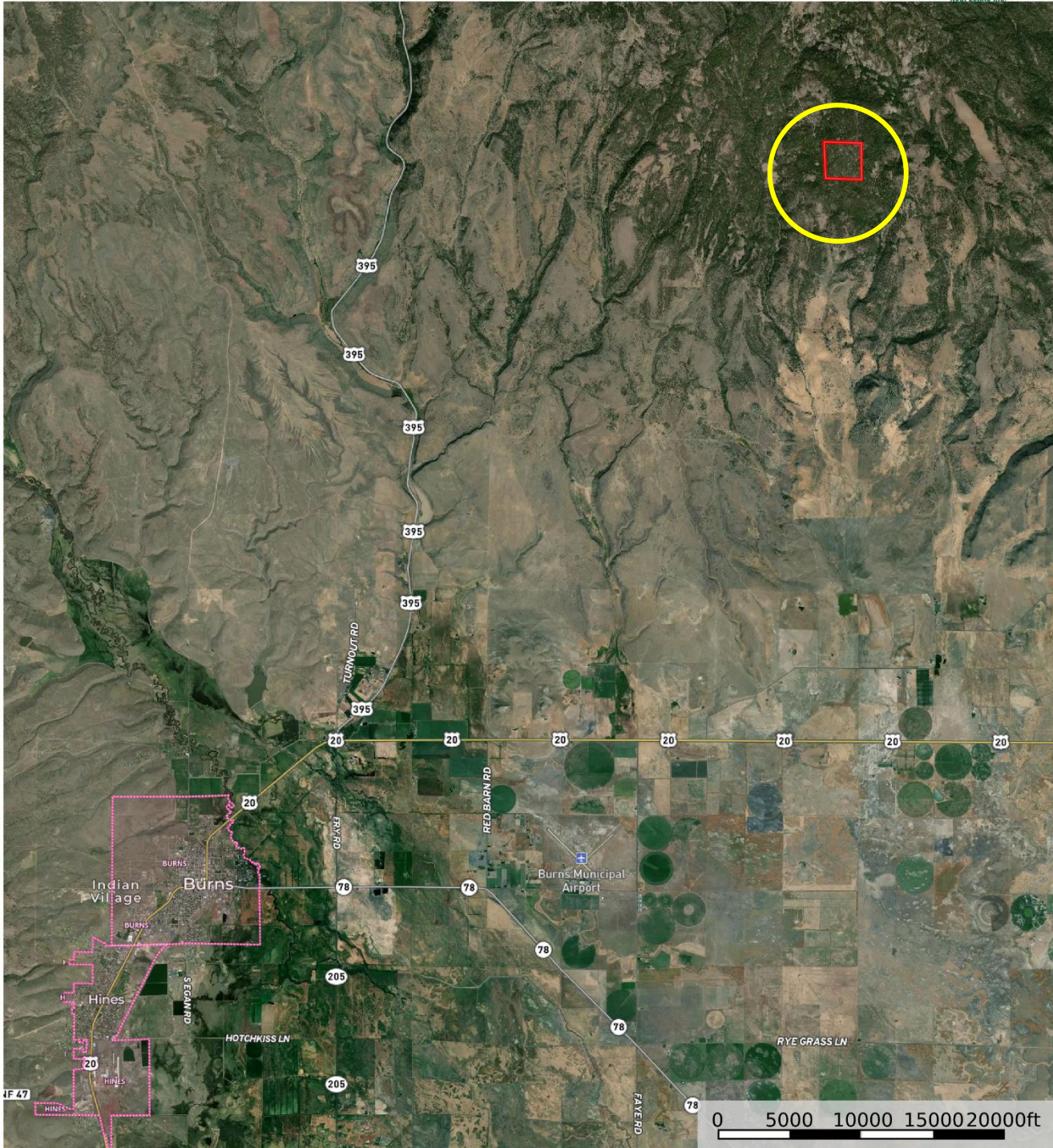
 Boundary

United County Jett Blackburn Real Estate (map for illustration purposes only)
P: 541-413-5660 www.jettblackburn.com 707 Ponderosa Village, Burns, OR 97720

 The information contained herein was obtained from sources deemed to be reliable. Land id™ Services makes no warranties or guarantees as to the completeness or accuracy thereof.



160 acres - Arntz
Oregon, 160 AC +/-



Boundary

United County Jett Blackburn Real Estate (map for illustration purposes only)
P: 541-413-5660 www.jettblackburn.com 707 Ponderosa Village, Burns, OR 97720

The information contained herein was obtained from sources deemed to be reliable. Land id™ Services makes no warranties or guarantees as to the completeness or accuracy thereof.



LOCATION: Approx. 25 miles northeast of Burns off Hwy 395 & FS Rd 2820

TAX LOT MAPS: 21S32E00-00-01100

ACREAGE: 160 +/- Deeded Acres – Per County Records

TAXES: 512.19





United Country Jett Blackburn Real Estate

United Country is a franchise-based real estate marketing company that has shown tremendous success in the real estate industry for the last 95 years. Throughout the entire United States, UC has sold over 2.8 million acres in 2022 alone, with \$9.9 billion in sales all together that covered a majority of recreational, farms, & ranches. To help make these sales possible UC has a comprehensive marketing program that includes printed advertising and special property marketing websites for farms & ranches. These marketing sites include Western Livestock Journal, Land & Farm, Capital Press, Lands of America, Farm & Ranch, Lands.com, SPG's, and much more. They are partnered with Realtree United Country Hunting Properties & UC Ranch Properties.

Jett Blackburn Real Estate Inc. is an independently owned brokerage franchised under United Country. First opened in 1960, Jett Blackburn Real Estate has been the oldest standing firm in their area specializing in sales of farms, ranches, hunting properties, recreational, & more. Curt Blackburn is the current owner & principal broker of Jett Blackburn Real Estate.

Presented By



Mardy Stewart

mardystewart@yahoo.com

(541)413-5770