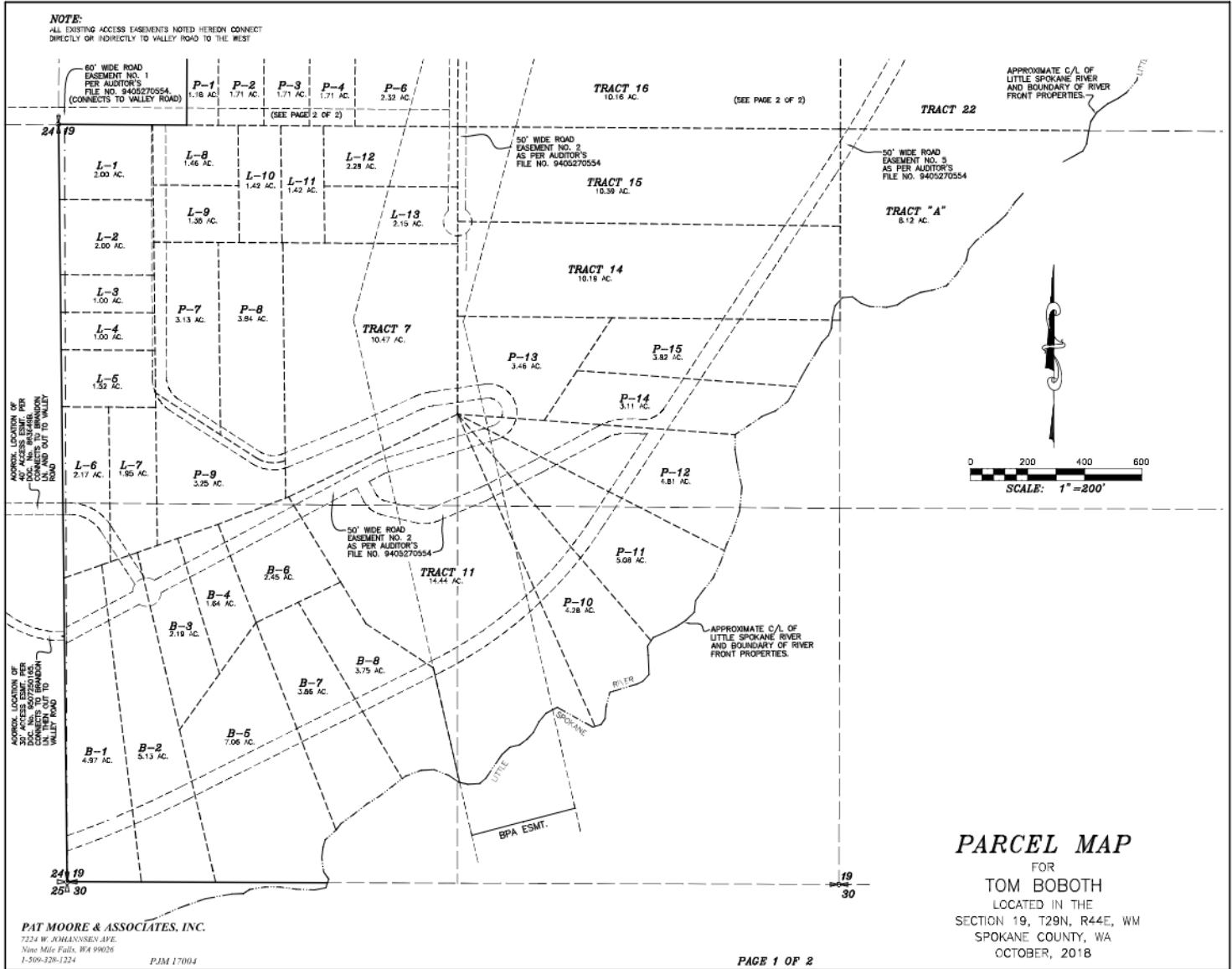


NOTE:
ALL EXISTING ACCESS EASEMENTS NOTED HEREON CONNECT DIRECTLY OR INDIRECTLY TO VALLEY ROAD TO THE WEST



PARCEL MAP
FOR
TOM BOBOTH
LOCATED IN THE
SECTION 19, T29N, R44E, WM
SPOKANE COUNTY, WA
OCTOBER, 2018

PAT MOORE & ASSOCIATES, INC.
7234 W. JOHANNSEN AVE.
Nine Mile Falls, WA 99026
1-509-326-1224 PJM 17004