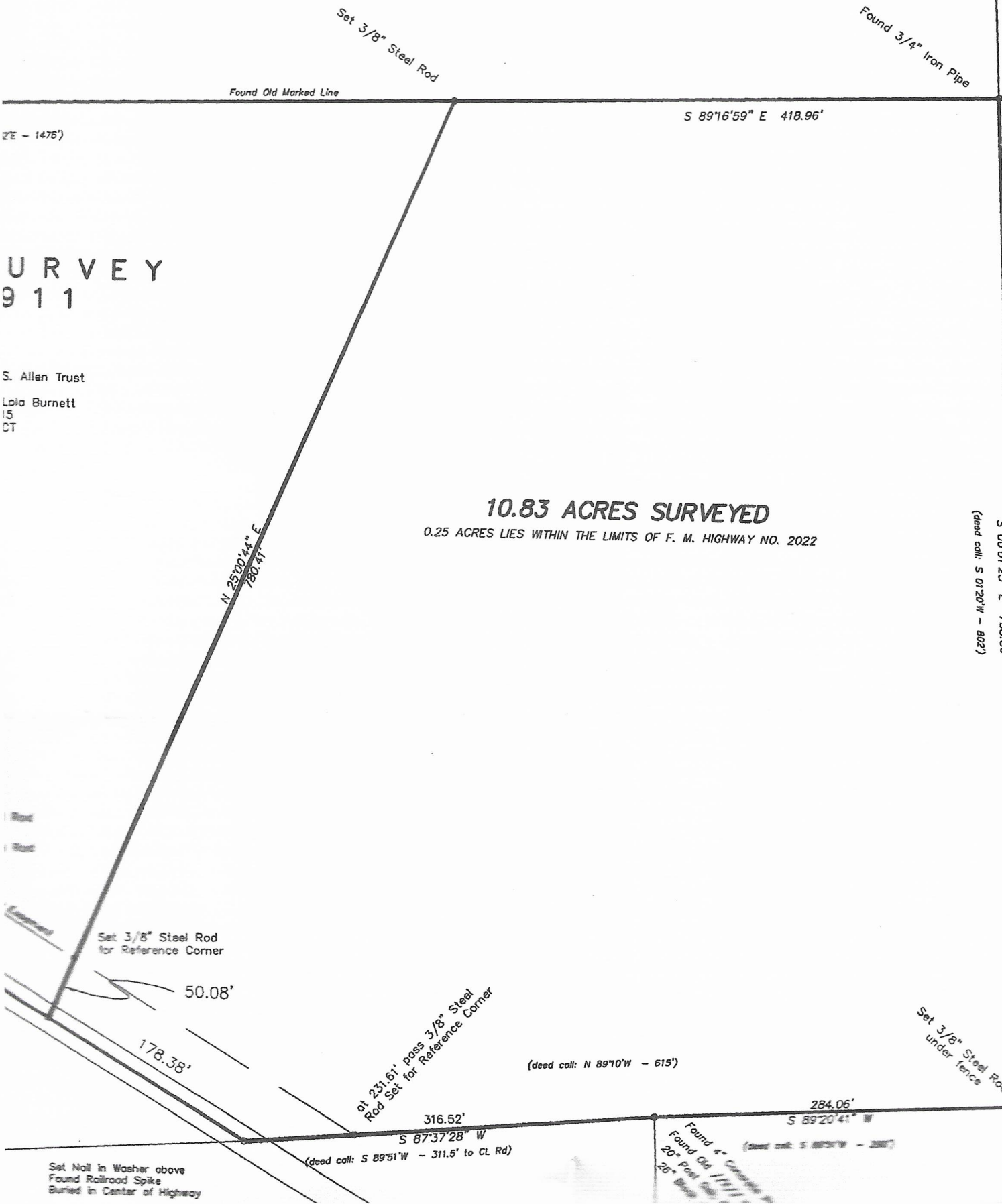


Ronald Wayne Murphy
To
Edward Griffin, Sr. et ux, Jeannie T. Griffin
August 17, 2007
2054/38 OPRACT
SURVEYED AS 35.28 ACRES BY ME DECEMBER 11, 2009

James E. Burleson, Jr. Family
Trust
August 26, 2004
1874/135 OPRACT

ABSTRACT NO. 874
(dead call: South - 1213.89')



SURVEY
911

S. Allen Trust
Lola Burnett
15
CT

10.83 ACRES SURVEYED

0.25 ACRES LIES WITHIN THE LIMITS OF F. M. HIGHWAY NO. 2022

(dead call: S 01°20'W - 802')

Found 1/2\"/>

110.20'

Found Old 20\"/>

Set Nail in Washer above
Found Railroad Spike
Buried in Center of Highway

Found 4\"/>