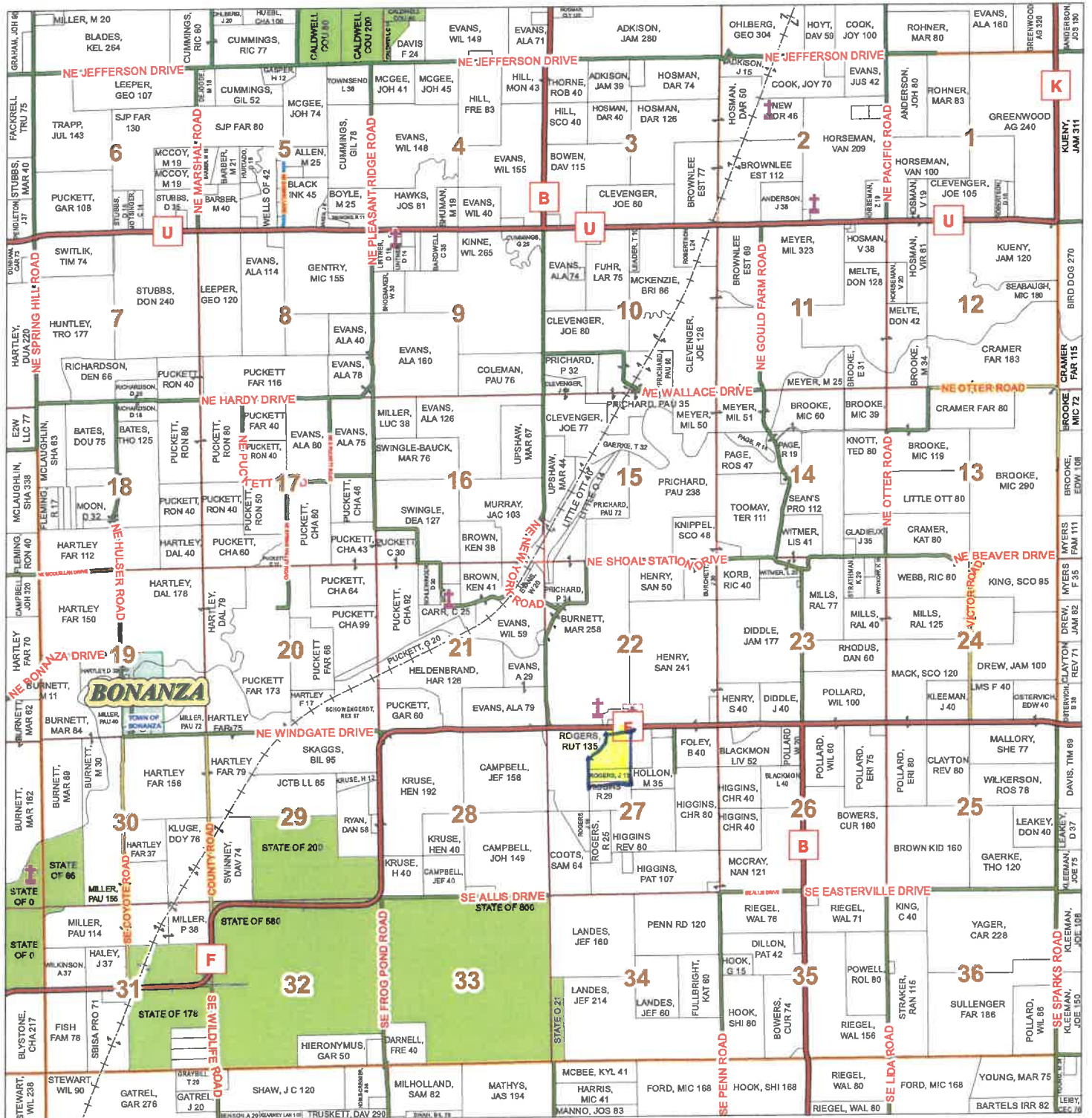


# T56N-R27W NEW YORK TOWNSHIP

See Page 17



See Page 29

See Page 33

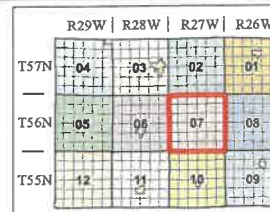
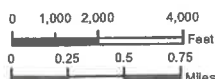
**Caldwell County Commission**  
 Dale Akey - Presiding  
 Jonathan Abbott - Eastern District  
 Rex Hibler - Western District

Data Courtesy Caldwell County  
 Geographic Information System  
 Beverly Alden - Assessor / GIS Manager

Most parcels > 10 ac labeled

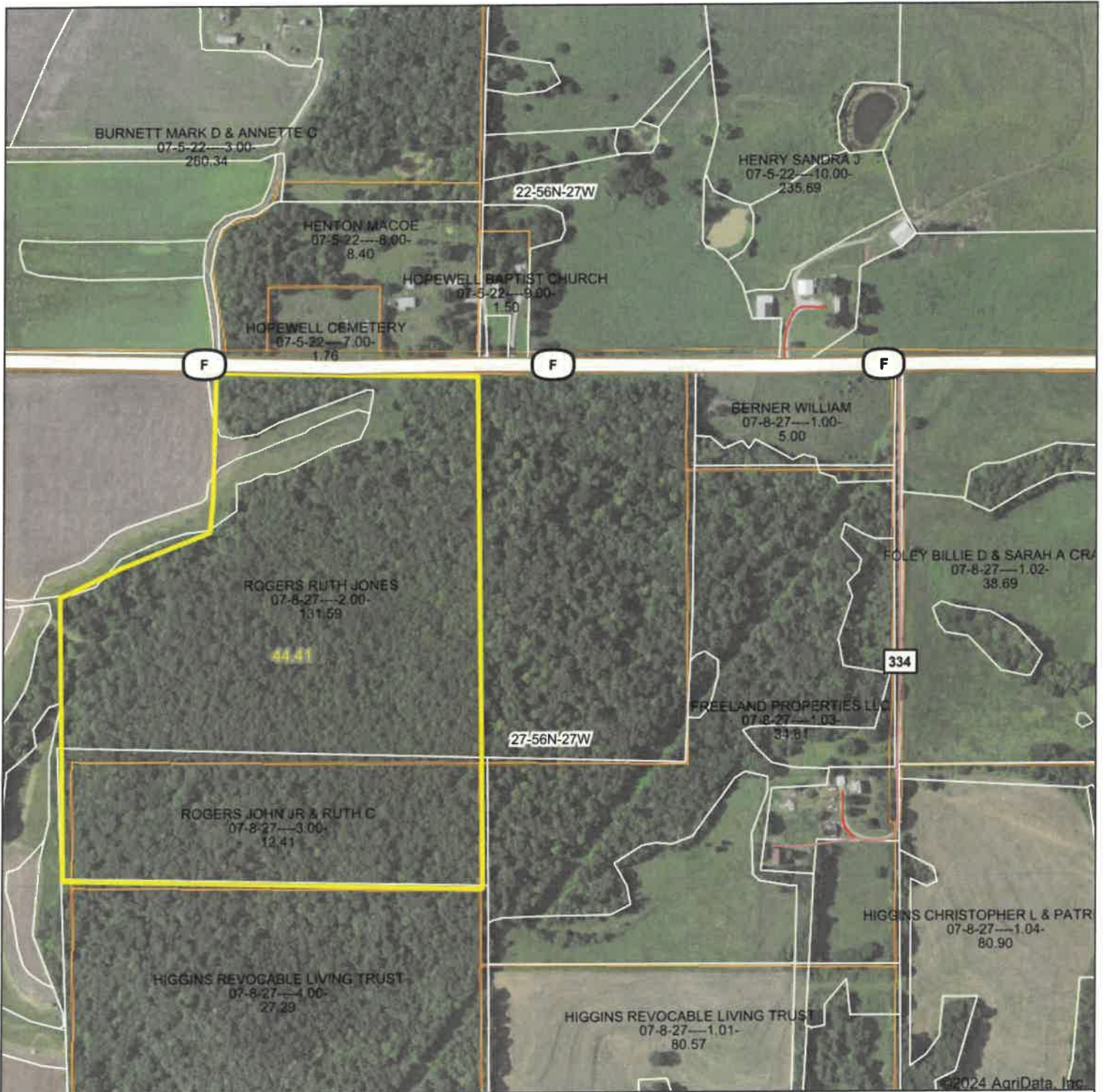
This Cadastral Map is for informational purposes only. It does not purport to represent a property boundary survey of the parcels shown and shall not be used for conveyances or the establishment of property boundaries

GIS & Map Development By:



Legend	
	US Highways
	ST Highways
	County Roads
	Dirt Roads
	Leases
	Rail Roads
	Water
	Land Ownership
	Subdivisions
	Land Hooks
	Cemeteries
	Church

# Aerial Map



Boundary Center: 39.639216, -93.920177



**27-56N-27W**  
**Caldwell County**



Maps Provided By: