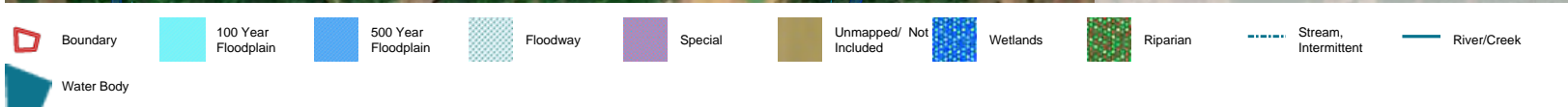
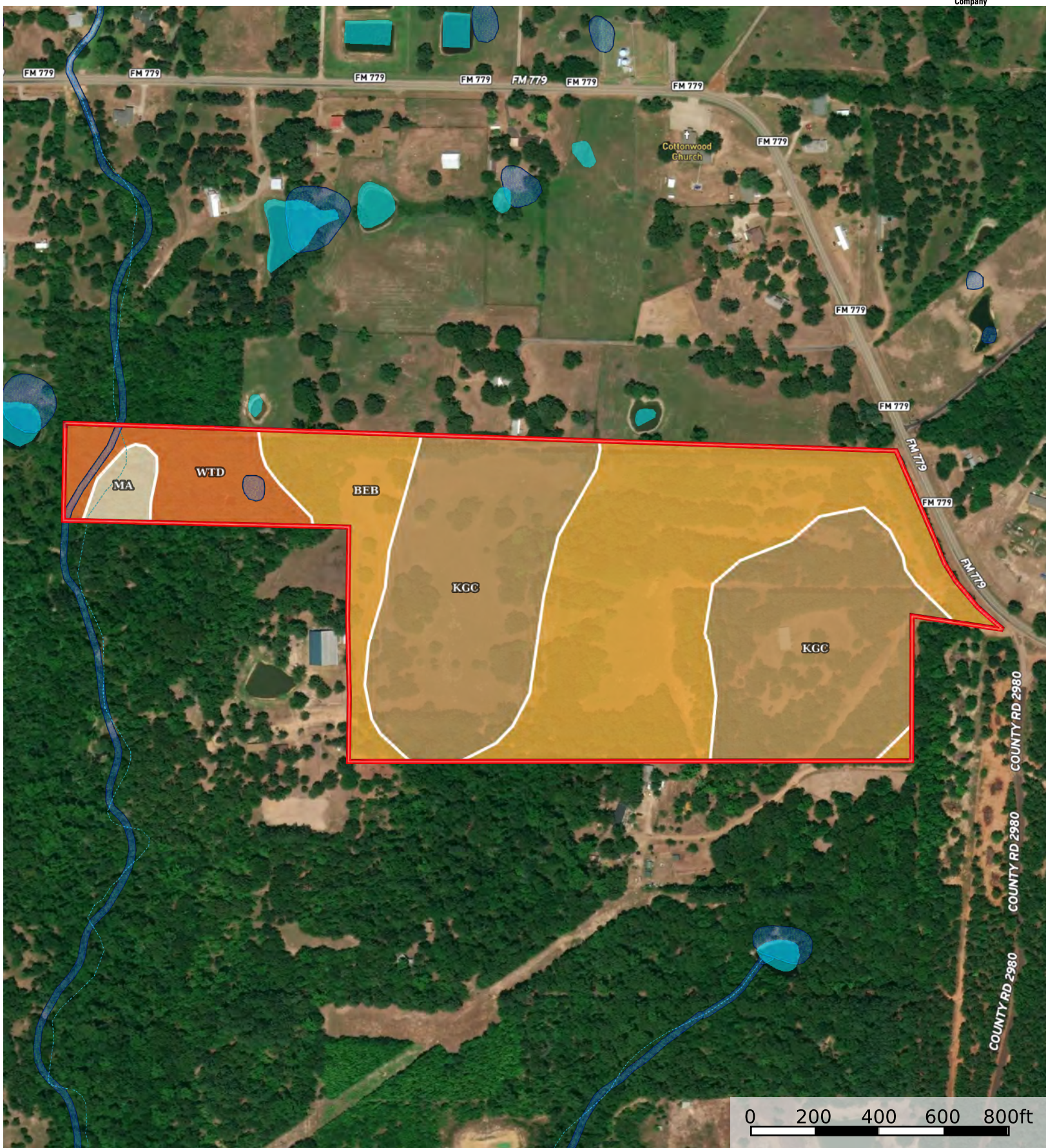


Recreational Land for Sale in East Texas 140 Private Road

Wood County, Texas, 47 AC +/-



|  Boundary 47.05 ac

| SOIL CODE | SOIL DESCRIPTION | ACRES | % | CPI | NCCPI | CAP |
|-----------|--|----------|-------|-----|-------|------|
| KgC | Kirvin gravelly fine sandy loam, 2 to 8 percent slopes | 21.47 | 45.64 | 0 | 61 | 4e |
| BeB | Bernaldo fine sandy loam, 1 to 3 percent slopes | 20.96 | 44.56 | 0 | 71 | 2e |
| WtD | Woodtell loam, 5 to 15 percent slopes | 3.71 | 7.89 | 0 | 61 | 6e |
| Ma | Manco loam, frequently flooded | 0.91 | 1.93 | 0 | 37 | 5w |
| TOTALS | | 47.05(*) | 100% | - | 65.0 | 3.29 |

(*) Total acres may differ in the second decimal compared to the sum of each acreage soil. This is due to a round error because we only show the acres of each soil with two decimal.

