



Slade Priest
 sladepriest1@gmail.com
 Office: (601) 250-0017
 Cell: (601) 888-0094
 SouthernStatesRealty.com



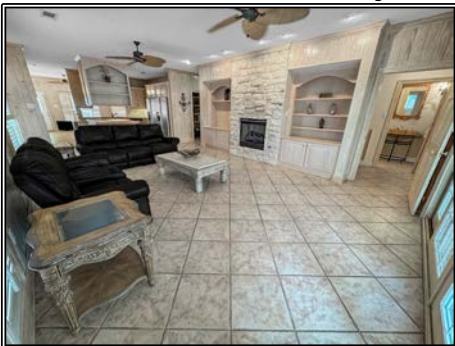
SOUTHERN STATES REALTY



Welcome to your new paradise in Washington Parish. This property is 50.11+- acres with a beautiful 4 bedroom 3.5 bath colonial style home with several custom finishes. The home sits overlooking two beautiful very large ponds that are stocked with fish and have the luxury of having a well to maintain the water levels in the event of a drought. There are four ponds total on the property giving you endless options to enjoy a great water feature. As you come through the gated and fenced entry down the driveway you will be welcomed by a hay barn, a dairy barn, and a horse stall barn and there is even a pole barn off of the driveway out by the highway. The land is comprised of 15+- acres of woods with the remainder in ponds, pasture, and improvements. Previously used for cattle and horses, the pasture is fenced and the fence still has great integrity. The home sits far back off of the road providing great seclusion, peace, and tranquility. Inside the home you are greeted with a beautiful dining and living space. Beyond that you'll approach the open concept living room and kitchen that has both an electric range and separate griddle. The space downstairs has a really unique feel. Upstairs sit another 3 beds and 2 baths with another living space and kitchenette. One of the bathrooms upstairs overlooks the front garden area giving one the perfect place to relax and look out over the landscape. There are two very large walk in closets; one being downstairs and one being upstairs and each of the main bedrooms upstairs and downstairs has its own fireplace. This property would make a great second home just being 30 miles from Covington, Hammond, and Mccomb. If you are tired of the hustle and bustle it would also make a great primary residence. The property gives you ample space to roam and enjoy outdoor recreational activities and would make a great small farm. Properties with this much character deserve your consideration! Give us a call today.

36453 Hwy 1055, Mt. Hermon, LA

30.957341, -90.280220 GPS



\$749,000

50.11± Acres
 MLS #141039



#HUNTINGLANDMAN