

VICINITY MAP

SURVEY LEGEND

- = SET 5/8 INCH REBAR W/CAP STAMPED RAMSES KY. LPLS 1953 (YELLOW CAPS ON CORNER POINTS ORANGE CAPS ON WITNESS POINTS)
- W/IPC = WITNESS IRON PIN & CAP
- = UNMARKED POINTS
- = TREES (AS NOTED)
- ▲ = FOUND MONUMENTS AS NOTED



RECORD TITLE FOR SURVEY
 Being the same land covered by BERLIN BUIS to ANTHONY BUIS dated 10-9-2000 and of record in deed book 202 at page 575 office of clerk of CASEY county Kentucky.

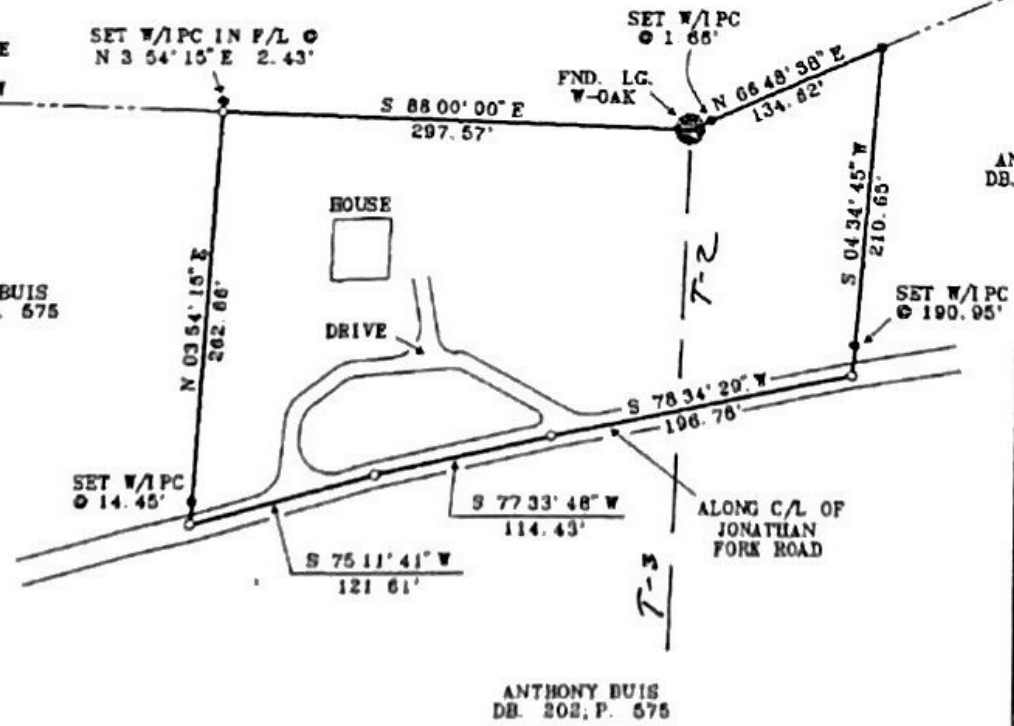
Part of Tracts 243

CLIPTON SCOTT
 DB. 168, P. 33



SURVEYORS CERTIFICATE
 I do hereby certify this to be a true and accurate plat of a survey by me on the data shown. The monuments have been placed or found as noted. The courses are unadjusted. The method of surveying was random traverse with side shots and RTK Global Positioning. The unadjusted error ratio exceeds 1:5000. This is a class B survey.

Richard Allan Montgomery
 RICHARD ALLAN MONTGOMERY
 PLS #1953
 4-26-2005
 DATE



ANTHONY BUIS
 DB. 202, P. 575

ANTHONY BUIS
 DB. 202, P. 575

SURVEY MAP
ANTHONY BUIS
 OUTLOT
 JONATHAN FORK ROAD
 CASEY COUNTY, KENTUCKY

THE MAPMAKER
 RICHARD ALLAN MONTGOMERY
 REGISTERED LAND SURVEYOR • 1953
 REGISTERED PROFESSIONAL ENGINEER 12034
 113 RANDOLPH STREET LIBERTY KY 42530
 (606)787-8437 BUSINESS 787-8246 HOME

| | | | |
|-----------------------------------|-------------------------------|----------------|-----------------------------|
| SCALE 1" = 100' INCH = FEET | TOTAL AREA 2.034 AC +/- | DATE 4-2005 | DRAWN BY MARK WETHINGTON |
|-----------------------------------|-------------------------------|----------------|-----------------------------|