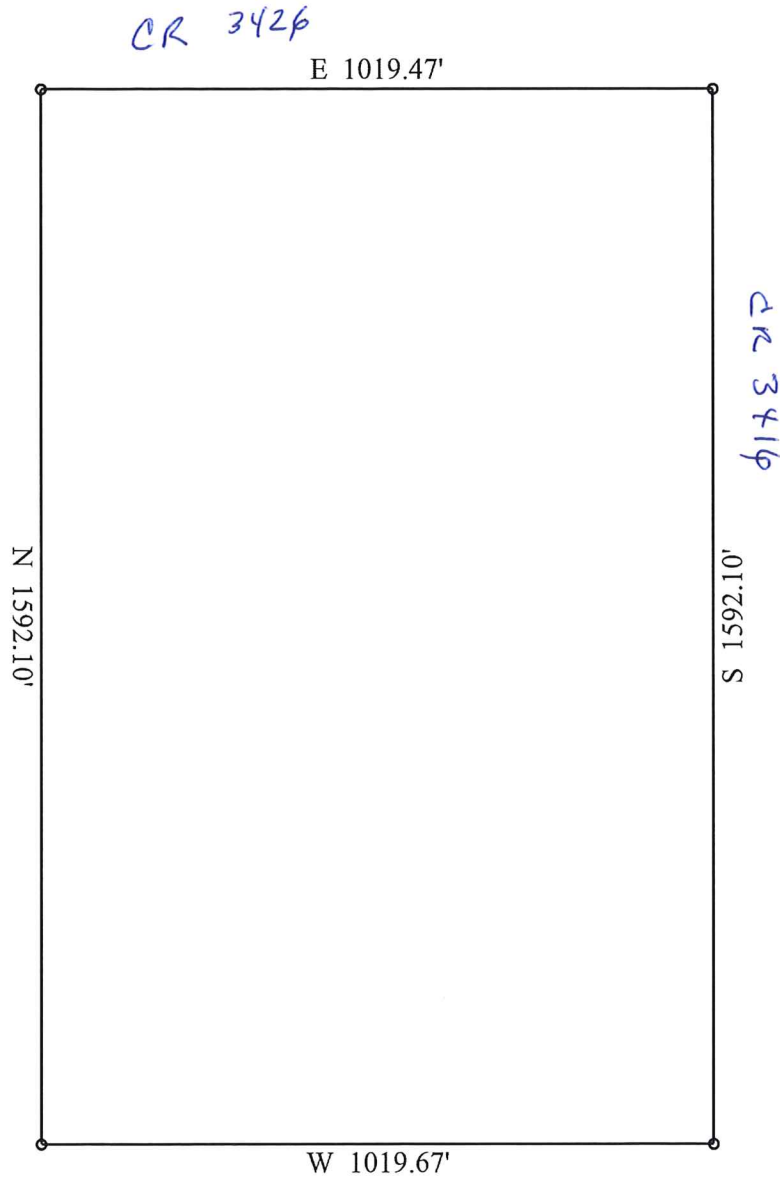


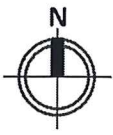


Scale: 1 inch = 290 feet  
Area: 37.269 acres (1,623,417.00 square feet)

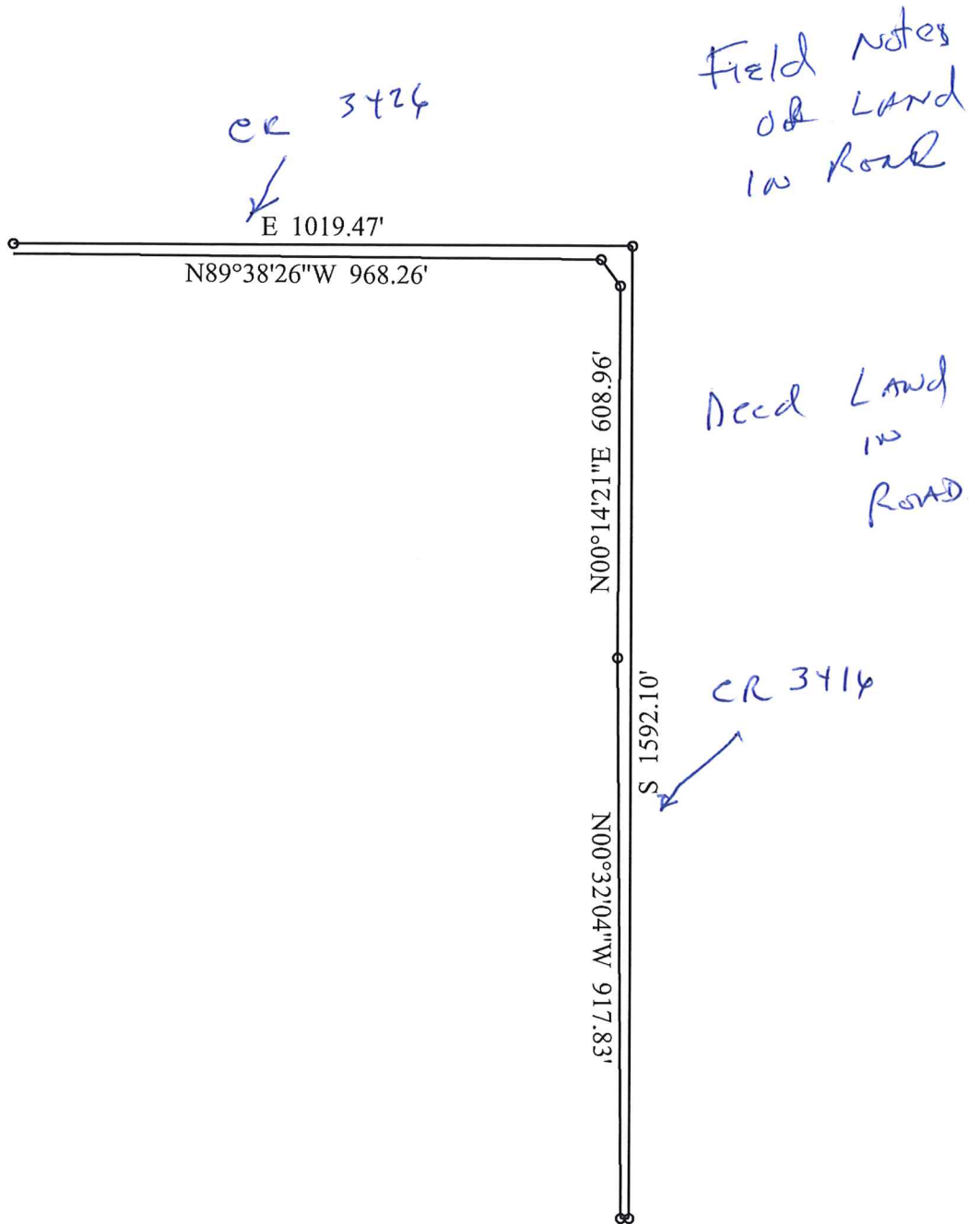
FIELD notes  
of Land



1. E 1019.47'
2. S 1592.10'
3. W 1019.67'
4. N 1592.10'



Scale: 1 inch = 290 feet  
Area: 1.155 acres (50,310.68 square feet)



1. E 1019.47'
2. S 1592.10'
3. W 13.60'
4. N00°32'04"W 917.83'

5. N00°14'21"E 608.96'
6. N36°21'33"W 53.65'
7. N89°38'26"W 968.26'