

PLAT OF LOT LINE ADJUSTMENT BETWEEN TRACT A-I-A AND TRACT A-I-B FOR RONALD T. HYDE AND JANE N. HYDE A Portion of the Historic Swayze Tract In the Vicinity of the Brasos Lodge Within the Three Amavilis Grant On Yorks County, New Mexico

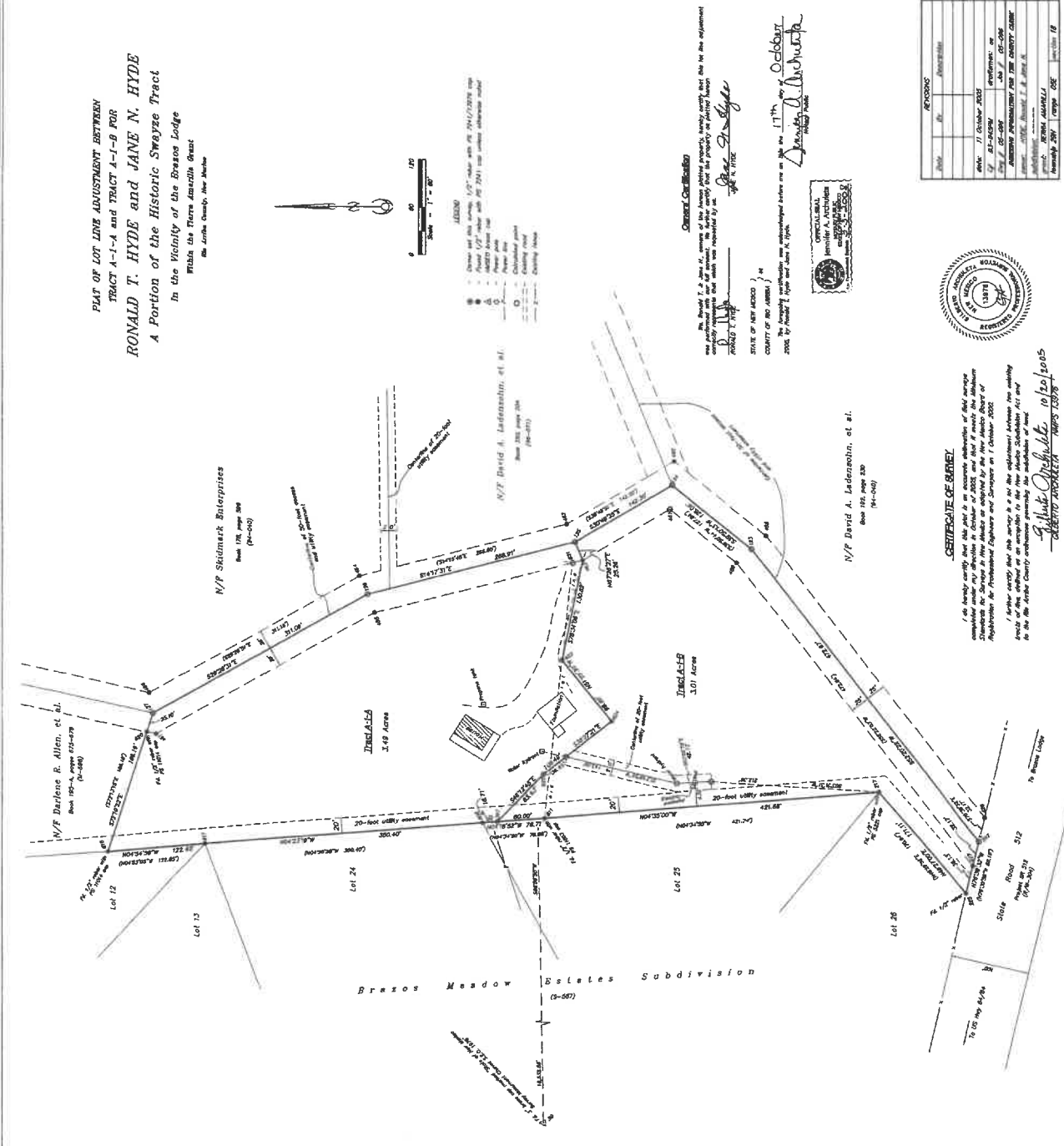


Table with columns for 'REVISIONS' and 'DATE'. It tracks changes to the survey plan, including the date of the original survey and subsequent amendments.



CERTIFICATE OF SURVEY I do hereby certify that this plat is an accurate representation of the original survey... (text continues with survey details and dates)



STATE OF NEW MEXICO... COUNTY OF YORCS... The accompanying map... (text continues with jurisdictional and recording information)

PLAT FOR THE... OCT 24 2005... YORKS COUNTY, NEW MEXICO... (text includes recording details and date)

Table with columns for 'REVISIONS' and 'DATE'. It tracks changes to the survey plan, including the date of the original survey and subsequent amendments.



- 1. Book of Deeds... 2. Reference made... 3. Order and other documents... 4. Note... 5. The survey... 6. Private easements... 7. Necessary easements... (list of legal notes and references)

