

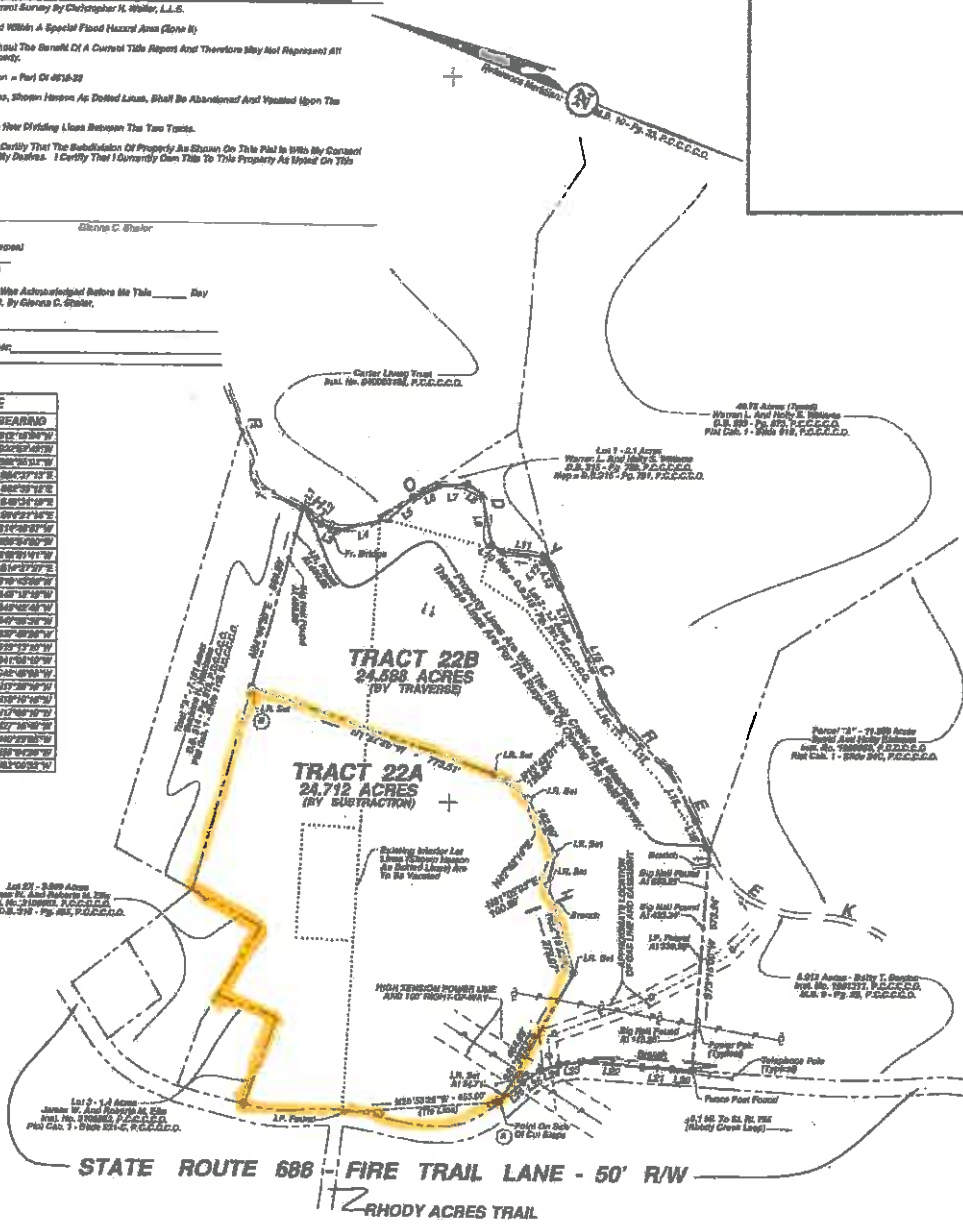
SURVEY

NOTES :

This Plat Represents A Current Survey By Christopher H. Waller, L.L.S.
 This Property Is Not Located Within A Special Flood Hazard Area (Zone B)
 This Plat Was Prepared Without The Benefit Of A Current Title Report And Therefore May Not Represent All Encumbrances On The Property.
 Clarify The Map Designation - Part Of 687A32
 All Existing Utility Lot Lines, Shown Herein As Dotted Lines, Shall Be Abandoned And Vested Upon The Recordation Of This Plat.
 Points A To B Represent The New Dividing Lines Between The Two Tracts.
 I, The Undersigned, Herby Certify That The Subdivision Of Property As Shown On This Plat Is With My Consent And Is In Accordance With My Duties. I Certify That I Currently Own Title To This Property As Shown On This Plat.

Glenn C. Shelor
 Clerk/Recorder Of Acknowledgment
 County Of _____
 Commonwealth Of Virginia
 The Following Instrument Was Acknowledged Before Me This _____ Day Of _____ 2022, By Glenn C. Shelor.
 Notary Public
 Notary Registration Number: _____
 My Commission Expires: _____

LINE	LENGTH	BEARING
L1	26.27	S82°15'00"W
L2	61.82	S82°15'00"W
L3	38.82	S82°15'00"W
L4	100.27	S82°15'00"E
L5	101.87	S82°15'00"E
L6	61.70	S82°15'00"E
L7	61.70	S82°15'00"E
L8	61.82	S82°15'00"E
L9	38.82	S82°15'00"E
L10	38.82	S82°15'00"E
L11	38.82	S82°15'00"E
L12	38.82	S82°15'00"E
L13	38.82	S82°15'00"E
L14	38.82	S82°15'00"E
L15	38.82	S82°15'00"E
L16	38.82	S82°15'00"E
L17	38.82	S82°15'00"E
L18	38.82	S82°15'00"E
L19	38.82	S82°15'00"E
L20	38.82	S82°15'00"E
L21	38.82	S82°15'00"E
L22	38.82	S82°15'00"E
L23	38.82	S82°15'00"E
L24	38.82	S82°15'00"E
L25	38.82	S82°15'00"E
L26	38.82	S82°15'00"E
L27	38.82	S82°15'00"E
L28	38.82	S82°15'00"E
L29	38.82	S82°15'00"E
L30	38.82	S82°15'00"E
L31	38.82	S82°15'00"E
L32	38.82	S82°15'00"E
L33	38.82	S82°15'00"E
L34	38.82	S82°15'00"E
L35	38.82	S82°15'00"E
L36	38.82	S82°15'00"E
L37	38.82	S82°15'00"E
L38	38.82	S82°15'00"E
L39	38.82	S82°15'00"E
L40	38.82	S82°15'00"E
L41	38.82	S82°15'00"E
L42	38.82	S82°15'00"E
L43	38.82	S82°15'00"E
L44	38.82	S82°15'00"E
L45	38.82	S82°15'00"E
L46	38.82	S82°15'00"E
L47	38.82	S82°15'00"E
L48	38.82	S82°15'00"E
L49	38.82	S82°15'00"E
L50	38.82	S82°15'00"E
L51	38.82	S82°15'00"E
L52	38.82	S82°15'00"E
L53	38.82	S82°15'00"E
L54	38.82	S82°15'00"E
L55	38.82	S82°15'00"E
L56	38.82	S82°15'00"E
L57	38.82	S82°15'00"E
L58	38.82	S82°15'00"E
L59	38.82	S82°15'00"E
L60	38.82	S82°15'00"E
L61	38.82	S82°15'00"E
L62	38.82	S82°15'00"E
L63	38.82	S82°15'00"E
L64	38.82	S82°15'00"E
L65	38.82	S82°15'00"E
L66	38.82	S82°15'00"E
L67	38.82	S82°15'00"E
L68	38.82	S82°15'00"E
L69	38.82	S82°15'00"E
L70	38.82	S82°15'00"E
L71	38.82	S82°15'00"E
L72	38.82	S82°15'00"E
L73	38.82	S82°15'00"E
L74	38.82	S82°15'00"E
L75	38.82	S82°15'00"E
L76	38.82	S82°15'00"E
L77	38.82	S82°15'00"E
L78	38.82	S82°15'00"E
L79	38.82	S82°15'00"E
L80	38.82	S82°15'00"E
L81	38.82	S82°15'00"E
L82	38.82	S82°15'00"E
L83	38.82	S82°15'00"E
L84	38.82	S82°15'00"E
L85	38.82	S82°15'00"E
L86	38.82	S82°15'00"E
L87	38.82	S82°15'00"E
L88	38.82	S82°15'00"E
L89	38.82	S82°15'00"E
L90	38.82	S82°15'00"E
L91	38.82	S82°15'00"E
L92	38.82	S82°15'00"E
L93	38.82	S82°15'00"E
L94	38.82	S82°15'00"E
L95	38.82	S82°15'00"E
L96	38.82	S82°15'00"E
L97	38.82	S82°15'00"E
L98	38.82	S82°15'00"E
L99	38.82	S82°15'00"E
L100	38.82	S82°15'00"E



Plat Of Survey For WARREN L. WILLIAMS And HOLLY S. WILLIAMS

Showing Property Situated On The Northeast Side Of State Route 688, Mayo River District, Patrick County, Virginia; Being Part Of The 60,487 Acre Tract As Shown On "Plat Of Survey For James R. Shelor" Dated March 31, 1976, As Prepared By A.M. Bennett, C.L.S. (Not Recorded), And All Of Lot 2 As Shown On "Plat Of Survey For James R. & Glenn C. Shelor And Warren L. & Holly S. Williams" In D.B. 315 - Pg. 791, P.C.C.C.C.O.; All Of Which Is Hereby Combined To Create The Newly Designated Tract 22B. The Remainder Of The 60,487 Acre Parcel (Currently Traced As 47.6 Acres) Is Hereby Designated As Tract 22A, And The Area Is Calculated By Subtraction. Also, Refer To "Plat For James R. Shelor" In M.B. 10 - Pg. 35, P.C.C.C.C.O. And To "Plat For Leonard Bowling" In M.B. 11 - Pg. 67, P.C.C.C.C.O.

Legal References: WHH No. 1800136, P.C.C.C.C.O. D.B. 186 - Pg. 432, P.C.C.C.C.O.
 D.B. 315 - Pg. 799, P.C.C.C.C.O. D.B. 182 - Pg. 612, P.C.C.C.C.O.

Scale: 1" = 200'
 January 21, 2023

Prepared By
CHRISTOPHER H. WALLER, L.L.S.
 125500 - 2200 - 010700 - 010000 - 3133
 PO BOX 44 Columbia, Virginia 22626 - Phone: 540-497-2382

