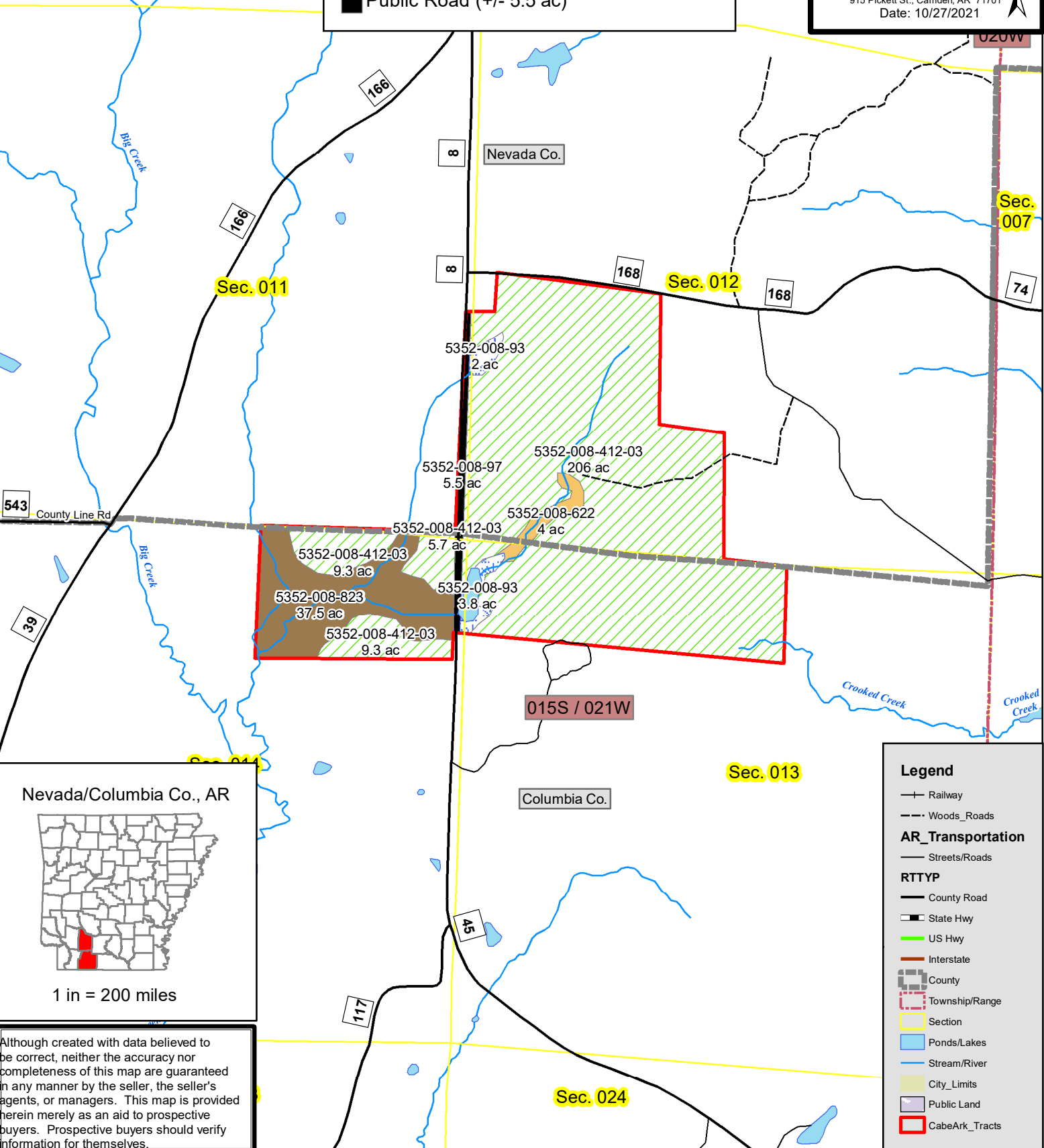




StandID

- 2003 Planted Pine, Upland (+/- 230.2 ac)
- Mostly Hardwood, Drain (+/- 4.0 ac)
- Hardwood, Bottoms (+/- 37.5 ac)
- Swamp/Wetland (+/- 5.8 ac)
- Public Road (+/- 5.5 ac)

TType Map
CabeArk, LP
 Lamartine Tract
 +/- 272.4 acres (taxes)
 Sec. 12,13,14-15S/21W
 Nevada/Columbia Co., AR
 — = property boundary
 0 660 1,320
 Feet
 1 in = 1,320 feet
 Created By: DN
 Neeley Forestry Service, Inc.
 915 Pickett St., Camden, AR 71701
 Date: 10/27/2021



Nevada/Columbia Co., AR

1 in = 200 miles

Legend

- Railway
- Woods_Roads
- AR_Transportation**
- Streets/Roads
- RTTYP**
- County Road
- State Hwy
- US Hwy
- Interstate
- County
- Township/Range
- Section
- Ponds/Lakes
- Stream/River
- City_Limits
- Public Land
- CabeArk_Tracts

Although created with data believed to be correct, neither the accuracy nor completeness of this map are guaranteed in any manner by the seller, the seller's agents, or managers. This map is provided herein merely as an aid to prospective buyers. Prospective buyers should verify information for themselves.