

**LINE TABLE**

LINE	BEARING	LENGTH	DATE
L1	N 48°15'14" E	184.53	11-23-92
L2	N 28°45'27" E	168.22	11-23-92
L3	N 89°05'33" E	110.81	11-23-92
L4	N 52°05'33" E	180.88	11-23-92
L5	N 52°05'33" E	180.88	11-23-92
L6	N 52°05'33" E	180.88	11-23-92
L7	N 52°05'33" E	180.88	11-23-92
L8	N 52°05'33" E	180.88	11-23-92
L9	N 52°05'33" E	180.88	11-23-92
L10	N 52°05'33" E	180.88	11-23-92
L11	N 52°05'33" E	180.88	11-23-92
L12	N 52°05'33" E	180.88	11-23-92
L13	N 52°05'33" E	180.88	11-23-92
L14	N 52°05'33" E	180.88	11-23-92
L15	N 52°05'33" E	180.88	11-23-92
L16	N 52°05'33" E	180.88	11-23-92

**CURVE TABLE**

CURVE	BEARING	ARC LENGTH	CHORD BEARING	CHORD LENGTH
C1	N 60° 00' 00" E	4.34	N 59° 59' 59" E	4.34
C2	N 60° 00' 00" E	1.48	N 59° 59' 59" E	1.48
C3	N 60° 00' 00" E	1.48	N 59° 59' 59" E	1.48
C4	N 60° 00' 00" E	1.48	N 59° 59' 59" E	1.48
C5	N 60° 00' 00" E	1.48	N 59° 59' 59" E	1.48
C6	N 60° 00' 00" E	1.48	N 59° 59' 59" E	1.48
C7	N 60° 00' 00" E	1.48	N 59° 59' 59" E	1.48
C8	N 60° 00' 00" E	1.48	N 59° 59' 59" E	1.48
C9	N 60° 00' 00" E	1.48	N 59° 59' 59" E	1.48
C10	N 60° 00' 00" E	1.48	N 59° 59' 59" E	1.48
C11	N 60° 00' 00" E	1.48	N 59° 59' 59" E	1.48
C12	N 60° 00' 00" E	1.48	N 59° 59' 59" E	1.48
C13	N 60° 00' 00" E	1.48	N 59° 59' 59" E	1.48
C14	N 60° 00' 00" E	1.48	N 59° 59' 59" E	1.48
C15	N 60° 00' 00" E	1.48	N 59° 59' 59" E	1.48
C16	N 60° 00' 00" E	1.48	N 59° 59' 59" E	1.48
C17	N 60° 00' 00" E	1.48	N 59° 59' 59" E	1.48
C18	N 60° 00' 00" E	1.48	N 59° 59' 59" E	1.48
C19	N 60° 00' 00" E	1.48	N 59° 59' 59" E	1.48
C20	N 60° 00' 00" E	1.48	N 59° 59' 59" E	1.48
C21	N 60° 00' 00" E	1.48	N 59° 59' 59" E	1.48
C22	N 60° 00' 00" E	1.48	N 59° 59' 59" E	1.48
C23	N 60° 00' 00" E	1.48	N 59° 59' 59" E	1.48
C24	N 60° 00' 00" E	1.48	N 59° 59' 59" E	1.48
C25	N 60° 00' 00" E	1.48	N 59° 59' 59" E	1.48
C26	N 60° 00' 00" E	1.48	N 59° 59' 59" E	1.48
C27	N 60° 00' 00" E	1.48	N 59° 59' 59" E	1.48
C28	N 60° 00' 00" E	1.48	N 59° 59' 59" E	1.48
C29	N 60° 00' 00" E	1.48	N 59° 59' 59" E	1.48
C30	N 60° 00' 00" E	1.48	N 59° 59' 59" E	1.48
C31	N 60° 00' 00" E	1.48	N 59° 59' 59" E	1.48
C32	N 60° 00' 00" E	1.48	N 59° 59' 59" E	1.48
C33	N 60° 00' 00" E	1.48	N 59° 59' 59" E	1.48
C34	N 60° 00' 00" E	1.48	N 59° 59' 59" E	1.48
C35	N 60° 00' 00" E	1.48	N 59° 59' 59" E	1.48
C36	N 60° 00' 00" E	1.48	N 59° 59' 59" E	1.48
C37	N 60° 00' 00" E	1.48	N 59° 59' 59" E	1.48
C38	N 60° 00' 00" E	1.48	N 59° 59' 59" E	1.48
C39	N 60° 00' 00" E	1.48	N 59° 59' 59" E	1.48
C40	N 60° 00' 00" E	1.48	N 59° 59' 59" E	1.48
C41	N 60° 00' 00" E	1.48	N 59° 59' 59" E	1.48
C42	N 60° 00' 00" E	1.48	N 59° 59' 59" E	1.48
C43	N 60° 00' 00" E	1.48	N 59° 59' 59" E	1.48
C44	N 60° 00' 00" E	1.48	N 59° 59' 59" E	1.48
C45	N 60° 00' 00" E	1.48	N 59° 59' 59" E	1.48
C46	N 60° 00' 00" E	1.48	N 59° 59' 59" E	1.48
C47	N 60° 00' 00" E	1.48	N 59° 59' 59" E	1.48
C48	N 60° 00' 00" E	1.48	N 59° 59' 59" E	1.48
C49	N 60° 00' 00" E	1.48	N 59° 59' 59" E	1.48
C50	N 60° 00' 00" E	1.48	N 59° 59' 59" E	1.48
C51	N 60° 00' 00" E	1.48	N 59° 59' 59" E	1.48
C52	N 60° 00' 00" E	1.48	N 59° 59' 59" E	1.48
C53	N 60° 00' 00" E	1.48	N 59° 59' 59" E	1.48
C54	N 60° 00' 00" E	1.48	N 59° 59' 59" E	1.48
C55	N 60° 00' 00" E	1.48	N 59° 59' 59" E	1.48
C56	N 60° 00' 00" E	1.48	N 59° 59' 59" E	1.48
C57	N 60° 00' 00" E	1.48	N 59° 59' 59" E	1.48
C58	N 60° 00' 00" E	1.48	N 59° 59' 59" E	1.48
C59	N 60° 00' 00" E	1.48	N 59° 59' 59" E	1.48
C60	N 60° 00' 00" E	1.48	N 59° 59' 59" E	1.48
C61	N 60° 00' 00" E	1.48	N 59° 59' 59" E	1.48
C62	N 60° 00' 00" E	1.48	N 59° 59' 59" E	1.48
C63	N 60° 00' 00" E	1.48	N 59° 59' 59" E	1.48
C64	N 60° 00' 00" E	1.48	N 59° 59' 59" E	1.48
C65	N 60° 00' 00" E	1.48	N 59° 59' 59" E	1.48
C66	N 60° 00' 00" E	1.48	N 59° 59' 59" E	1.48
C67	N 60° 00' 00" E	1.48	N 59° 59' 59" E	1.48
C68	N 60° 00' 00" E	1.48	N 59° 59' 59" E	1.48
C69	N 60° 00' 00" E	1.48	N 59° 59' 59" E	1.48
C70	N 60° 00' 00" E	1.48	N 59° 59' 59" E	1.48
C71	N 60° 00' 00" E	1.48	N 59° 59' 59" E	1.48
C72	N 60° 00' 00" E	1.48	N 59° 59' 59" E	1.48
C73	N 60° 00' 00" E	1.48	N 59° 59' 59" E	1.48
C74	N 60° 00' 00" E	1.48	N 59° 59' 59" E	1.48
C75	N 60° 00' 00" E	1.48	N 59° 59' 59" E	1.48
C76	N 60° 00' 00" E	1.48	N 59° 59' 59" E	1.48
C77	N 60° 00' 00" E	1.48	N 59° 59' 59" E	1.48
C78	N 60° 00' 00" E	1.48	N 59° 59' 59" E	1.48
C79	N 60° 00' 00" E	1.48	N 59° 59' 59" E	1.48
C80	N 60° 00' 00" E	1.48	N 59° 59' 59" E	1.48
C81	N 60° 00' 00" E	1.48	N 59° 59' 59" E	1.48
C82	N 60° 00' 00" E	1.48	N 59° 59' 59" E	1.48
C83	N 60° 00' 00" E	1.48	N 59° 59' 59" E	1.48
C84	N 60° 00' 00" E	1.48	N 59° 59' 59" E	1.48
C85	N 60° 00' 00" E	1.48	N 59° 59' 59" E	1.48
C86	N 60° 00' 00" E	1.48	N 59° 59' 59" E	1.48
C87	N 60° 00' 00" E	1.48	N 59° 59' 59" E	1.48
C88	N 60° 00' 00" E	1.48	N 59° 59' 59" E	1.48
C89	N 60° 00' 00" E	1.48	N 59° 59' 59" E	1.48
C90	N 60° 00' 00" E	1.48	N 59° 59' 59" E	1.48
C91	N 60° 00' 00" E	1.48	N 59° 59' 59" E	1.48
C92	N 60° 00' 00" E	1.48	N 59° 59' 59" E	1.48
C93	N 60° 00' 00" E	1.48	N 59° 59' 59" E	1.48
C94	N 60° 00' 00" E	1.48	N 59° 59' 59" E	1.48
C95	N 60° 00' 00" E	1.48	N 59° 59' 59" E	1.48
C96	N 60° 00' 00" E	1.48	N 59° 59' 59" E	1.48
C97	N 60° 00' 00" E	1.48	N 59° 59' 59" E	1.48
C98	N 60° 00' 00" E	1.48	N 59° 59' 59" E	1.48
C99	N 60° 00' 00" E	1.48	N 59° 59' 59" E	1.48
C100	N 60° 00' 00" E	1.48	N 59° 59' 59" E	1.48

Witness in the Clerk's Office of the Circuit Court of the County of Patrick, Virginia, this 14th day of May, 2009, at the City of Martinsburg, West Virginia.

*[Signature]*  
 Clerk of the Circuit Court

STATE ROUTE 708 - 40' R/W

12.394 ACRES

10.174 ACRES

7.184 ACRES

4.742 ACRES

2.333 ACRES

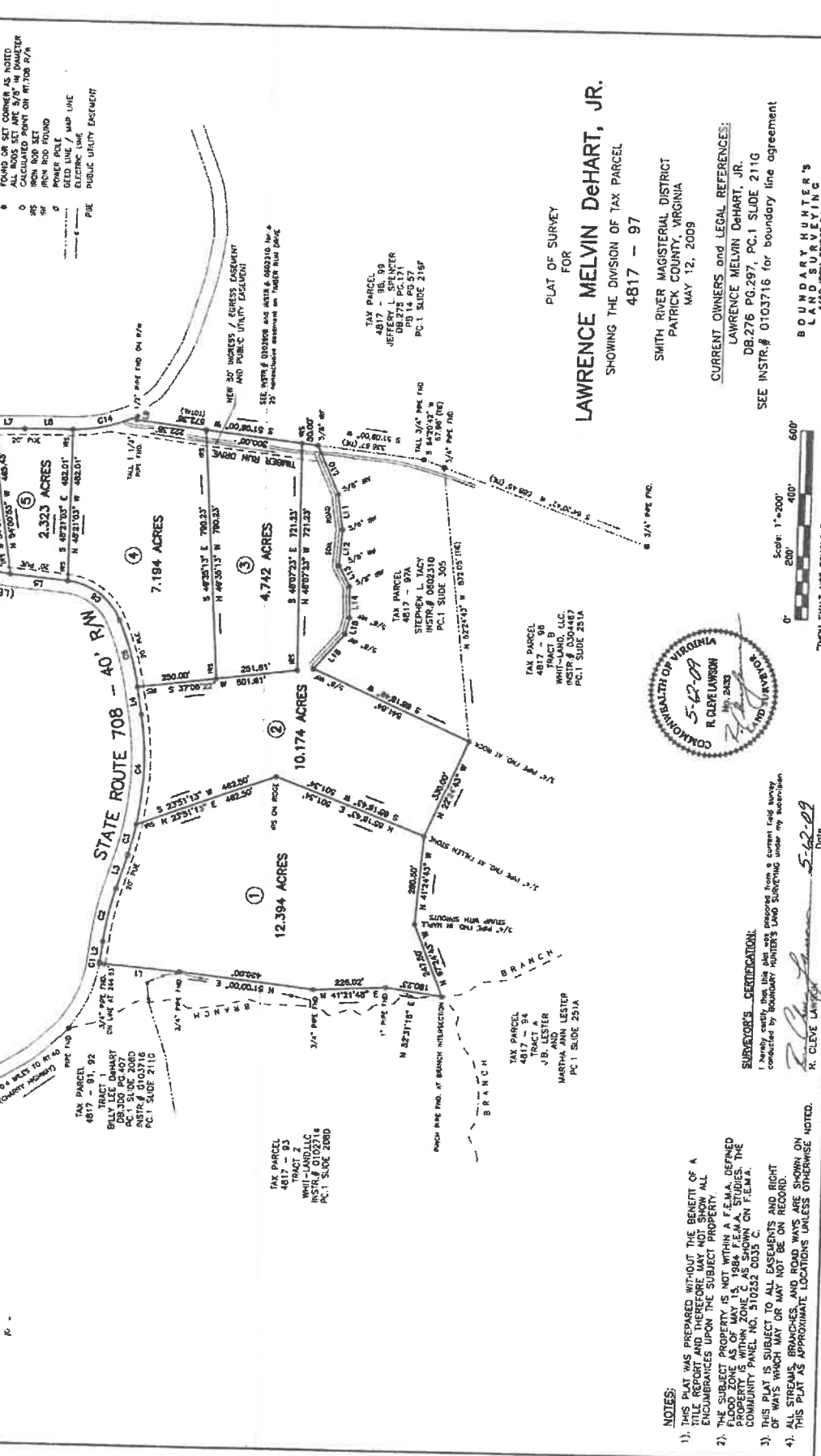
2.353 ACRES

LEGEND

These standard symbols are to be found in the drawing:

- FOUND OR SET CORNER AS NOTED
- ALL ROSS SET ART 5/8" W DIAUTER
- CALCULATED POINT ON RT708 R/W
- IRON ROD SET
- IRON PIPE FOUND
- POWER POLE
- DEED LINE / MAP LINE
- ELECTRIC LINE
- PUBLIC UTILITY EASEMENT
- PIPE

LOCATION MAP  
 NOT TO SCALE



0901284

Plat to  
 State Dehart  
 3355 Elk Creek Ln  
 Christiansburg, VA 24073



SUBSCRIBER'S CERTIFICATION:

I hereby certify that this plat was prepared from a current and correct connection by Boundary Hunter's Land Surveying under my supervision.

*[Signature]*  
 R. CLEVE LAWTON  
 Date 5-12-09

- NOTES:
- 1) THIS PLAT WAS PREPARED WITHOUT THE BENEFIT OF A TITLE REPORT AND THEREFORE MAY NOT SHOW ALL ENCUMBRANCES UPON THE SUBJECT PROPERTY.
  - 2) THE SUBJECT PROPERTY IS NOT WITHIN A F.E.M.A. DEFINED FLOODPLAIN WITHIN ZONE A, 1984 F.E.M.A. STUDIES. THE COMMUNITY PANEL NO. 510252 0035 C.
  - 3) THIS PLAT IS SUBJECT TO ALL EASEMENTS AND RIGHT OF WAYS WHICH MAY OR MAY NOT BE ON RECORD.
  - 4) ALL STREAMS, BRANCHES, AND ROAD WAYS ARE SHOWN ON THIS PLAT AS APPROXIMATE LOCATIONS UNLESS OTHERWISE NOTED.