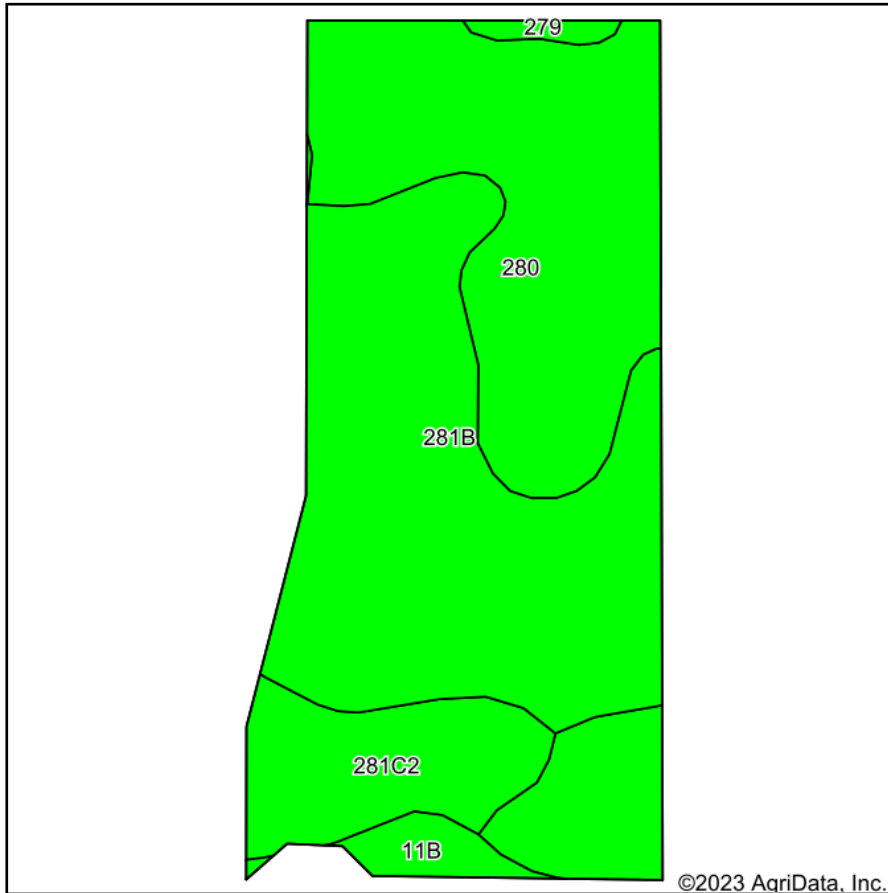
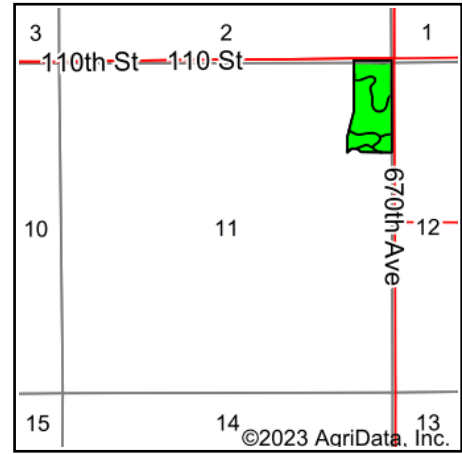


Boundary Lines Are Approximate

# Soils Map



Soils data provided by USDA and NRCS.



State: **Iowa**  
 County: **Monroe**  
 Location: **11-73N-17W**  
 Township: **Bluff Creek**  
 Acres: **21.47**  
 Date: **3/2/2023**

**Hawkeye Farm Mgmt & Real Estate**

**United Country Real Estate**  
 22 N Main, Albia IA Phone: 641-932-7796  
 Email: hawkeye@uciowa.com  
 On the web: www.uciowa.com  
 www.iowawhitehillfarms.com

Maps Provided By:



Area Symbol: IA135, Soil Area Version: 30

Code	Soil Description	Acres	Percent of field	CSR2 Legend	Non-Irr Class *c	CSR2**	CSR	*n NCCPI Soybeans	
281B	Otley silty clay loam, 2 to 5 percent slopes	9.48	44.2%		Ile	91	90	76	
280	Mahaska silty clay loam, 0 to 2 percent slopes	8.68	40.4%		Iw	94	95	77	
281C2	Otley silty clay loam, 5 to 9 percent slopes, eroded	2.54	11.8%		IIle	82	70	65	
11B	Colo-Ely complex, 0 to 5 percent slopes	0.57	2.7%		IIw	86	63	76	
279	Taintor silt loam, 0 to 2 percent slopes	0.20	0.9%		IIw	83	88	69	
<b>Weighted Average</b>						<b>1.71</b>	<b>90.9</b>	<b>88.9</b>	<b>*n 75</b>

\*\*IA has updated the CSR values for each county to CSR2.

\*n: The aggregation method is "Weighted Average using all components"

\*c: Using Capabilities Class Dominant Condition Aggregation Method

Soils data provided by USDA and NRCS.