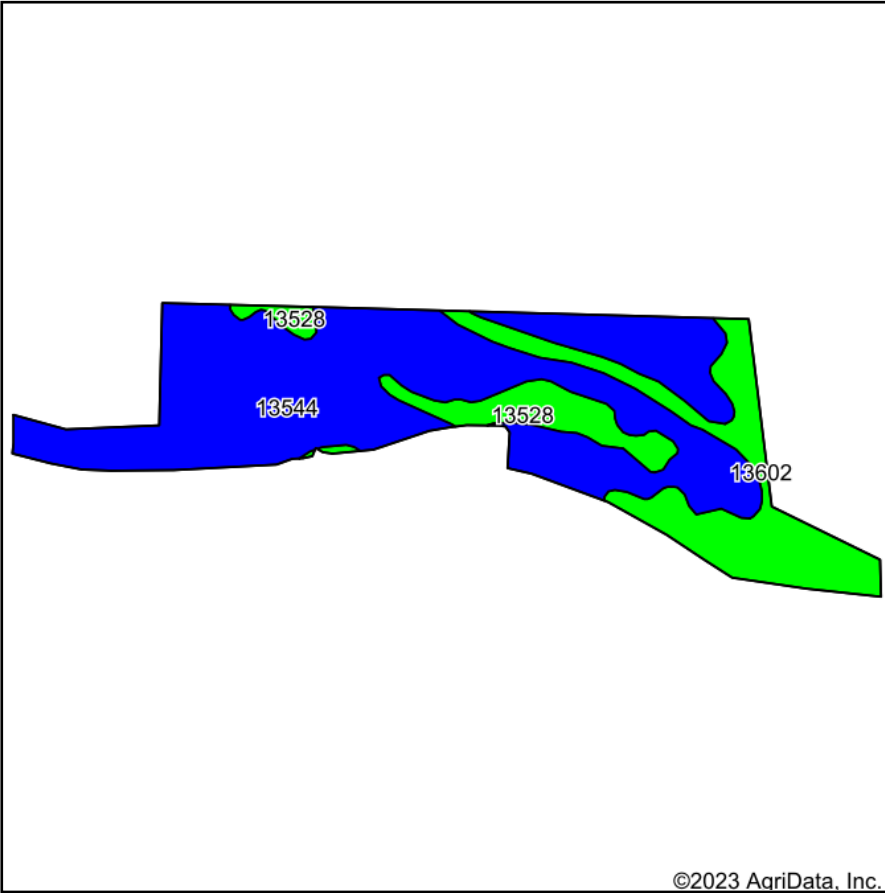
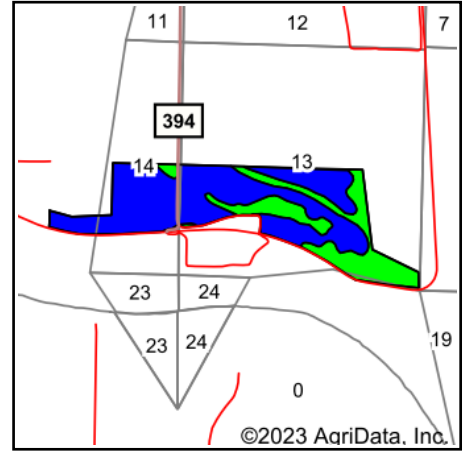


Soils Map



Soils data provided by USDA and NRCS.



State: **Missouri**
 County: **Andrew**
 Location: **13-58N-36W**
 Township: **Lincoln**
 Acres: **229.74**
 Date: **1/7/2023**



Maps Provided By:



© AgriData, Inc. 2021

www.AgriDataInc.com



Area Symbol: MO003, Soil Area Version: 24

Code	Soil Description	Acres	Percent of field	Non-Irr Class Legend	Non-Irr Class *c	Common bermudagrass Tons	Orchardgrass red clover Tons	Tall fescue Tons	Warm season grasses Tons	Winter wheat Bu	*n NCCPI Overall	*n NCCPI Corn	*n NCCPI Soybeans
13544	Leta silty clay, 0 to 2 percent slopes, rarely flooded	160.23	69.7%		Ilw	7	6	7	8		65	62	65
13602	Haynie silt loam, 0 to 2 percent slopes, rarely flooded	48.65	21.2%		lw	7	8	8	9	1	65	60	64
13528	Haynie very fine sandy loam, 0 to 2 percent slopes, rarely flooded	20.86	9.1%		ls	7	9	8	10		66	60	64
Weighted Average						1.70	7	6.7	7.3	8.4	*n 65.1	*n 61.4	*n 64.7

*n: The aggregation method is "Weighted Average using all components"

*c: Using Capabilities Class Dominant Condition Aggregation Method

Soils data provided by USDA and NRCS.