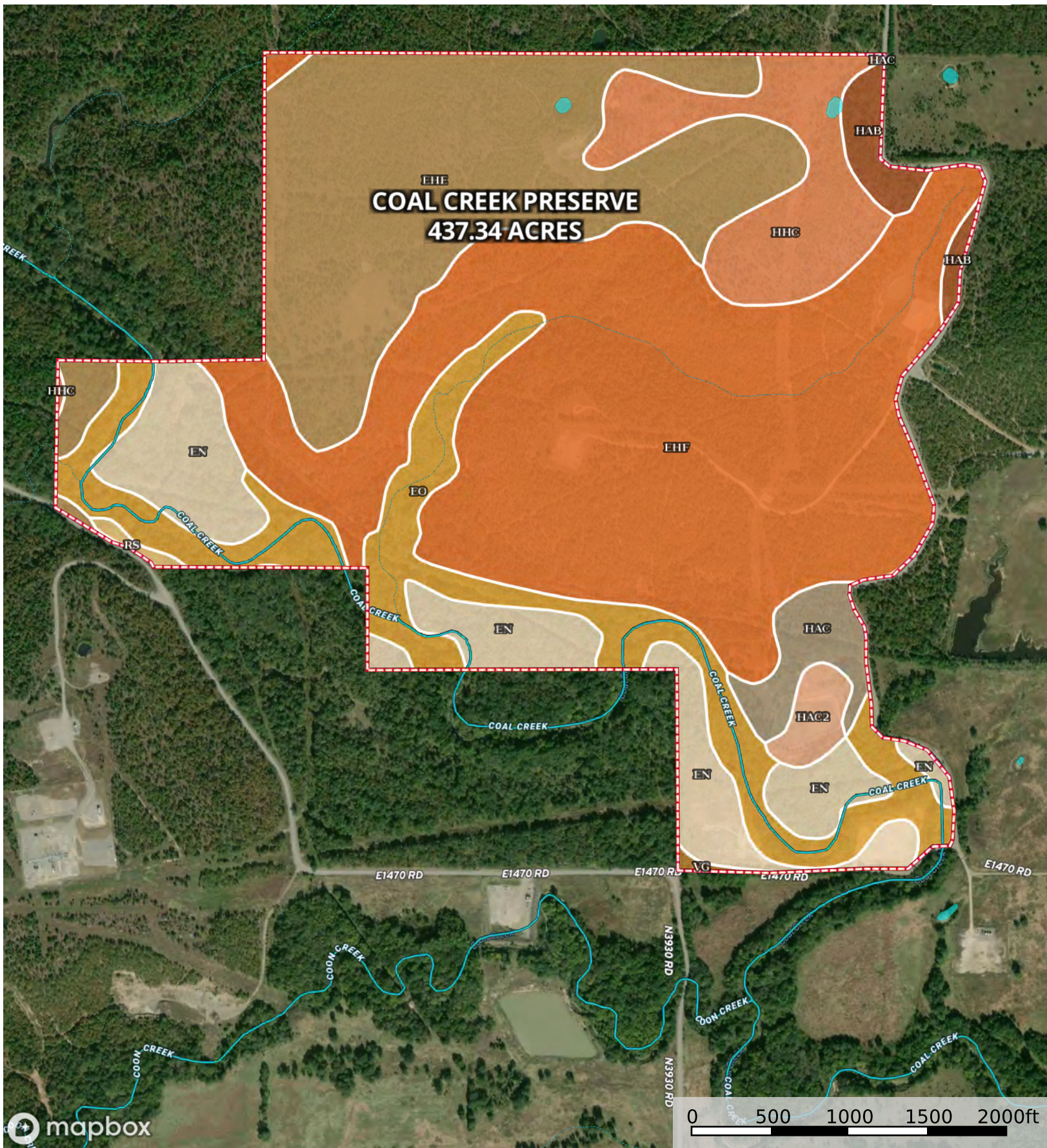


Coal Creek Preserve

Pittsburg County, Oklahoma, 437.34 AC +/-



mapbox

- Boundary
- Stream, Intermittent
- River/Creek
- Water Body

|  Boundary 445.3 ac

SOIL CODE	SOIL DESCRIPTION	ACRES	%	CPI	NCCPI	CAP
EhF	Bengal-Clebit-Rock outcrop complex, 30 to 60 percent slopes	180.48	40.53	0	5	7e
EhE	Bengal-Clebit-Clearview complex, 5 to 30 percent slopes	106.45	23.91	0	21	7e
Eo	Rexor and Verdigris soils, 0 to 1 percent slopes, frequently flooded	54.8	12.31	0	66	5w
En	Rexor silt loam, 0 to 1 percent slopes, occasionally flooded	47.88	10.75	0	81	2w
HhC	Clebit-Clearview complex, 3 to 5 percent slopes	31.3	7.03	0	36	4s
HaC	Clearview fine sandy loam, 3 to 5 percent slopes	10.2	2.29	0	56	3e
HaB	Clearview fine sandy loam, 1 to 3 percent slopes	7.45	1.67	0	57	3e
HaC2	Clearview fine sandy loam, 3 to 5 percent slopes, eroded	5.0	1.12	0	51	4e
Rs	Cupco silt loam, 0 to 1 percent slopes, occasionally flooded	1.1	0.25	0	76	2w
Vg	Verdigris silt loam, 0 to 1 percent slopes, occasionally flooded	0.64	0.14	0	72	2w
TOTALS		445.3(*)	100%	-	29.51	5.79









(*) Total acres may differ in the second decimal compared to the sum of each acreage soil. This is due to a round error because we only show the acres of each soil with two decimal.

Capability Legend

Increased Limitations and Hazards

Decreased Adaptability and Freedom of Choice Users

Land, Capability

								
	1	2	3	4	5	6	7	8
'Wild Life'	•	•	•	•	•	•	•	•
Forestry	•	•	•	•	•	•	•	
Limited	•	•	•	•	•	•	•	
Moderate	•	•	•	•	•	•		
Intense	•	•	•	•	•			
Limited	•	•	•	•				
Moderate	•	•	•					
Intense	•	•						
Very Intense	•							

Grazing Cultivation

(c) climatic limitations (e) susceptibility to erosion

(s) soil limitations within the rooting zone (w) excess of water