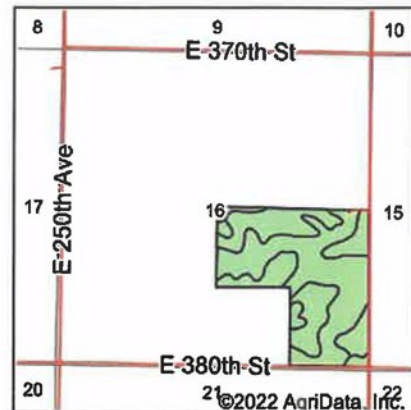
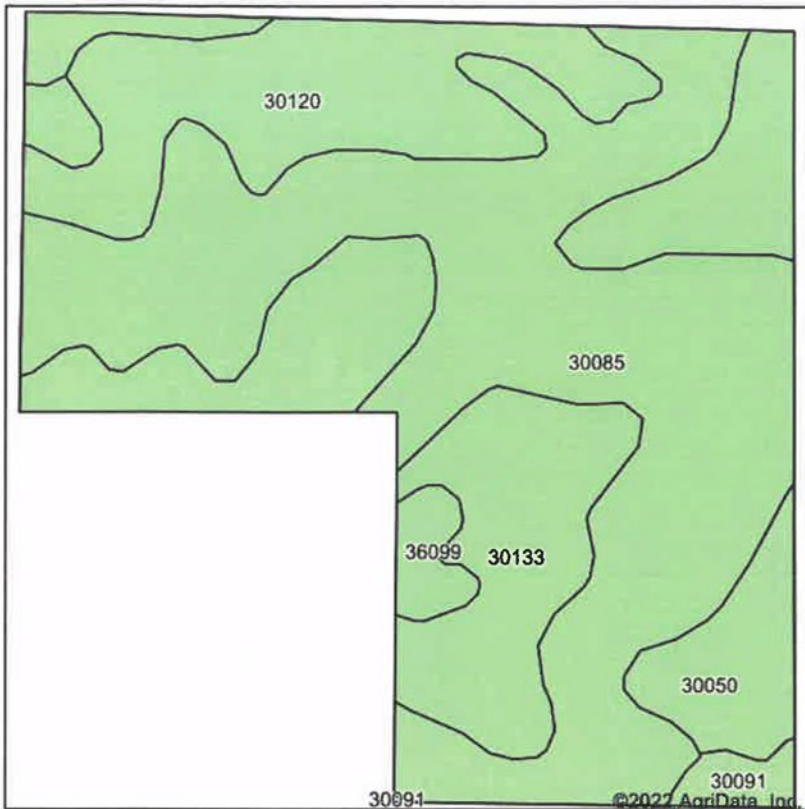


Soils Map



State: Missouri
County: Harrison
Location: 16-62N-27W
Township: Adams
Acres: 120.5
Date: 12/20/2022



Maps Provided By:



Soils data provided by USDA and NRCS.

© AgriData, Inc. 2021

www.AgriDataInc.com

Area Symbol: MO081, Soil Area Version: 26

| Code | Soil Description | Acres | Percent of field | Non-Irr Class *c | Alfalfa hay Tons | Caucasian bluestem Tons | Common bermudagrass Tons | Orchardgrass red clover Tons | Tall fescue Tons | Warm season grasses Tons |
|-------------------------|---|-------|------------------|------------------|------------------|-------------------------|--------------------------|------------------------------|------------------|--------------------------|
| 30085 | Grundy silt loam, 2 to 5 percent slopes | 57.92 | 48.1% | Ile | | | | | | |
| 30133 | Lamoni clay loam, 5 to 9 percent slopes, eroded | 24.65 | 20.5% | IIle | | | | | | |
| 30120 | Lagonda silty clay loam, 5 to 9 percent slopes, eroded | 18.97 | 15.7% | IIle | 5 | 8 | 7 | 8 | 7 | 8 |
| 30050 | Edina silt loam, 0 to 2 percent slopes | 13.21 | 11.0% | IIIw | | | | | | |
| 36099 | Zook-Colo silty clay loams, 1 to 3 percent slopes, frequently flooded | 4.12 | 3.4% | IIIw | | | 8 | 7 | 8 | 9 |
| 30091 | Grundy silty clay loam, 2 to 5 percent slopes, moderately eroded | 1.63 | 1.4% | Ile | | | | | | |
| Weighted Average | | | | 2.51 | 0.8 | 1.3 | 1.4 | 1.5 | 1.4 | 1.6 |

*c: Using Capabilities Class Dominant Condition Aggregation Method