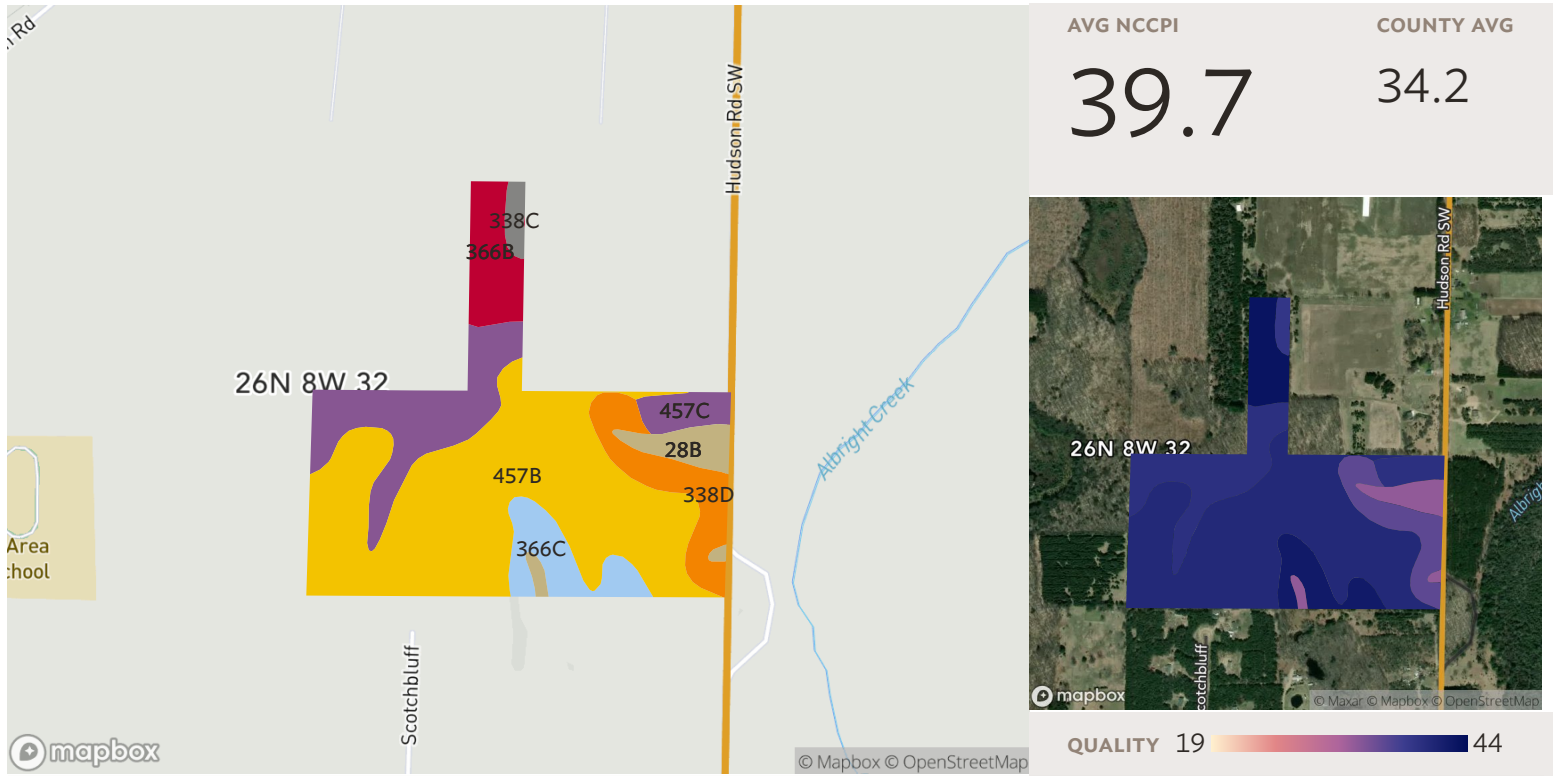


1 field, 88 acres in Kalkaska County, MI



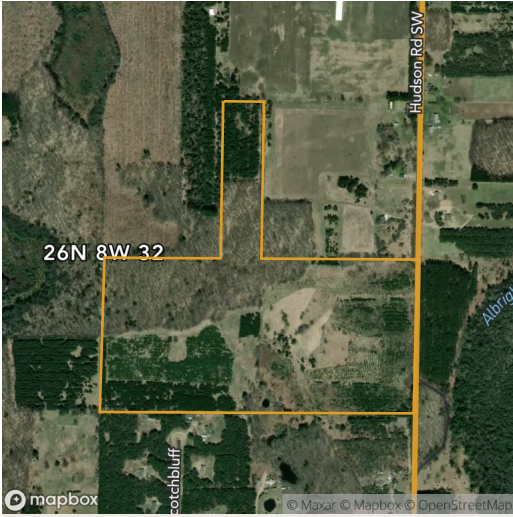
All fields

Source: NRCS Soil Survey

88 ac.

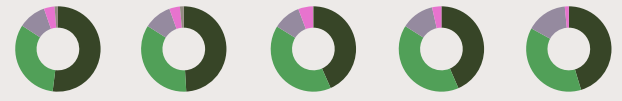
SOIL CODE	SOIL DESCRIPTION	ACRES	PERCENTAGE OF FIELD	SOIL CLASS	NCCPI
457B	Islandlake-Southwells complex, 0 to 6 percent slopes	47.15	53.5%	4	40.3
457C	Islandlake-Southwells complex, 6 to 12 percent slopes	16.31	18.5%	6	39.4
338D	Islandlake sand, 12 to 18 percent slopes	7.79	8.8%	7	35.9
366C	Islandlake-Blue Lake complex, 6 to 12 percent slopes	6.05	6.9%	6	42.2
366B	Islandlake-Blue Lake complex, 0 to 6 percent slopes	5.76	6.5%	4	43.0
28B	East Lake sand, 0 to 6 percent slopes	3.76	4.3%	4	33.0
338C	Islandlake sand, 6 to 12 percent slopes	1.25	1.4%	6	38.6
88.07					39.7

1 field, 88 acres in Kalkaska County, MI



All fields

88 ac.



2021 2020 2019 2018 2017

■ Forest	52.0%	49.1%	43.4%	43.5%	45.4%
■ Grass/Pasture	32.2%	34.9%	40.4%	40.5%	37.6%
■ Non-Cropland	10.5%	10.5%	10.5%	12.5%	15.5%
■ Alfalfa	4.0%	4.0%	5.6%	3.5%	1.5%
■ Other	1.3%	1.4%	0.2%	-	-

Source: NASS Cropland Data Layer