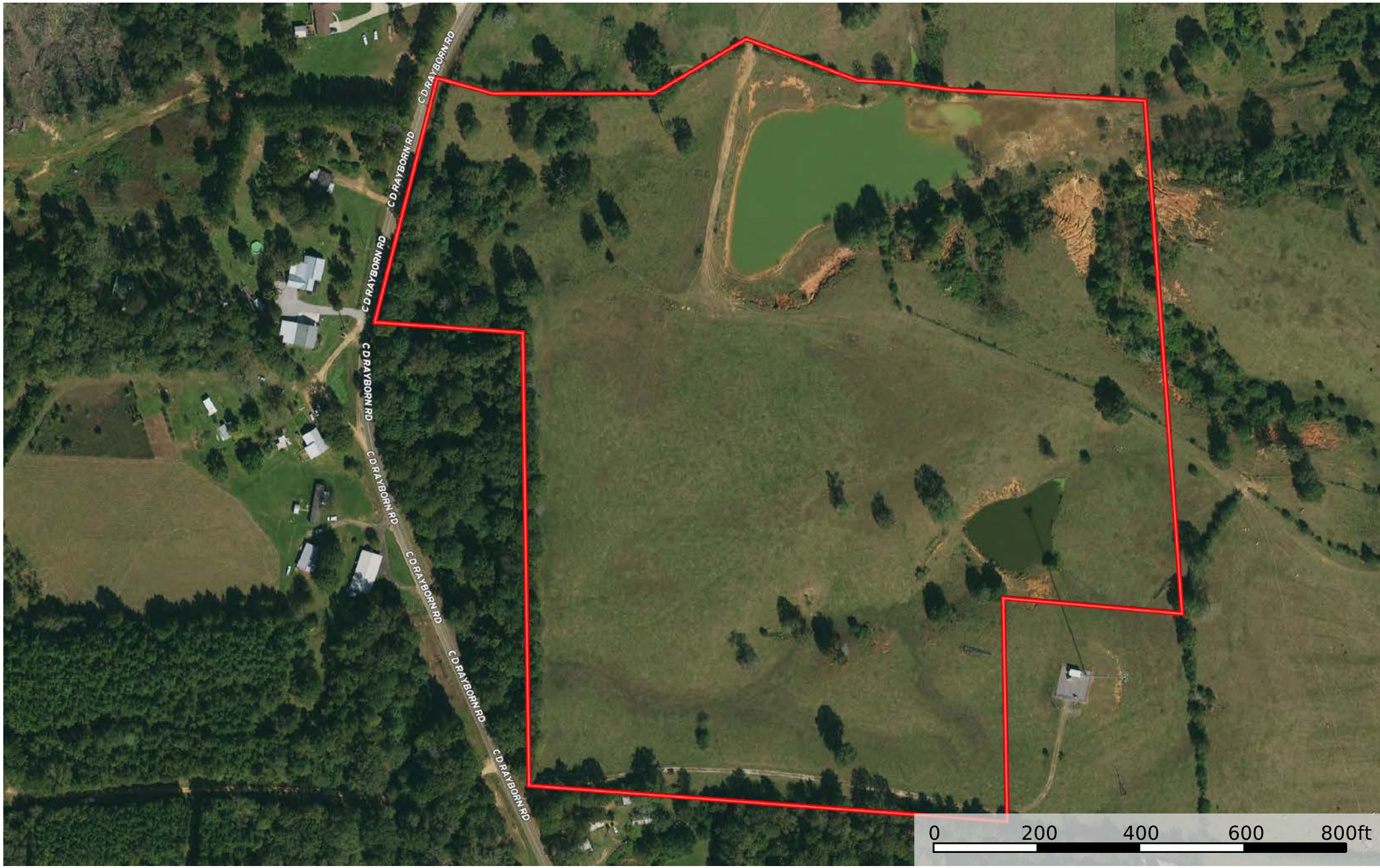
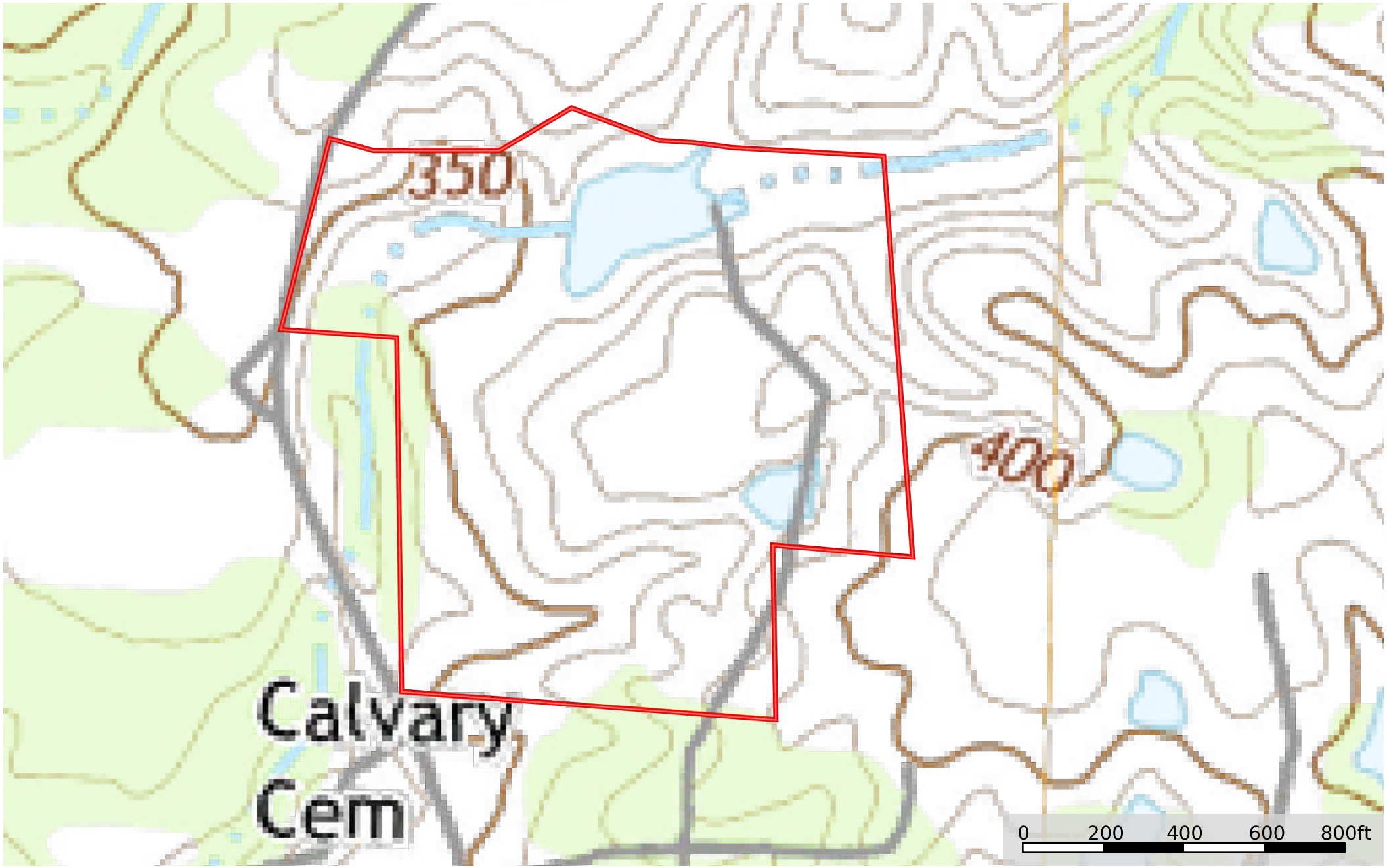


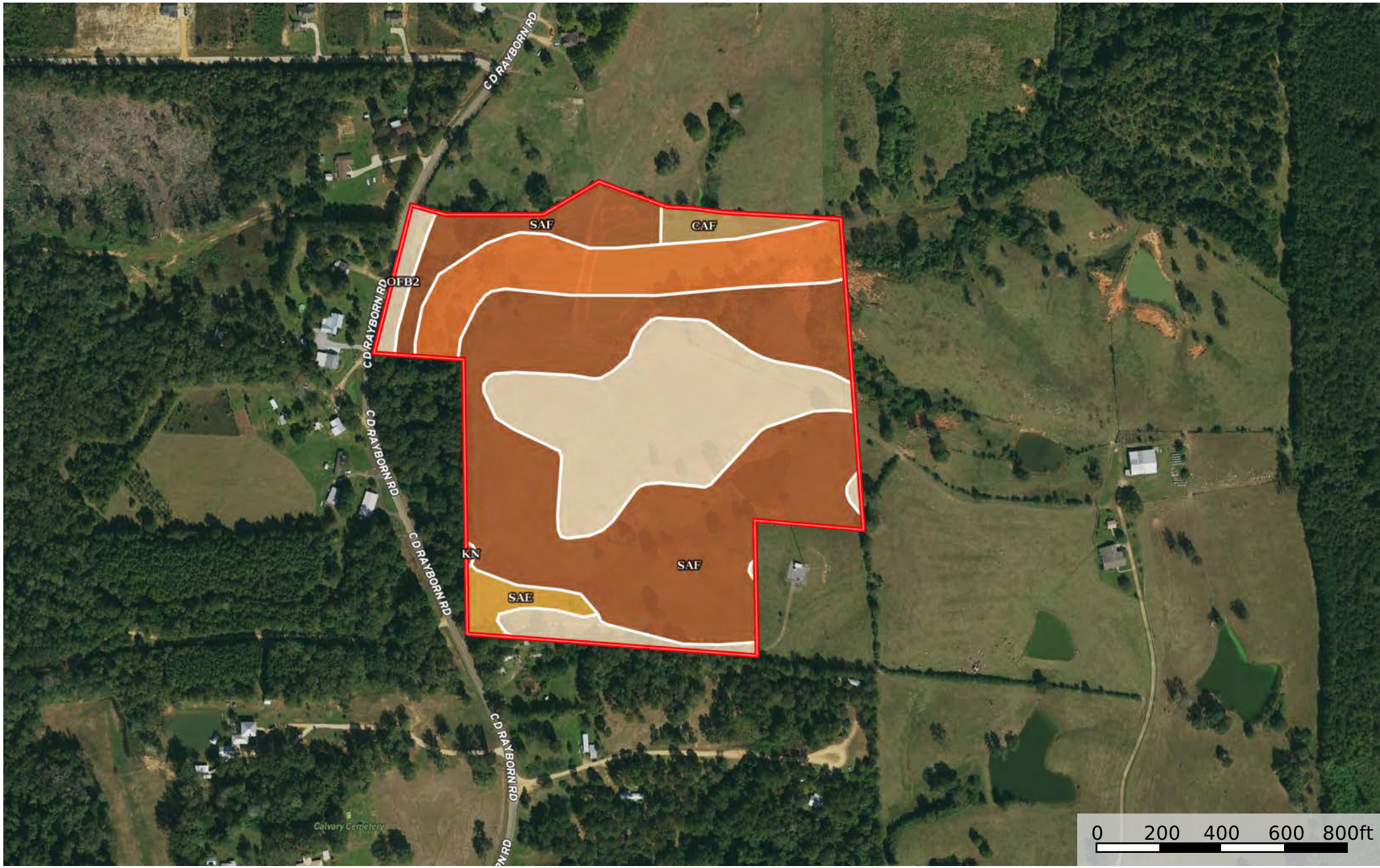
Boundary



 Boundary



 Boundary



 Boundary

|  Boundary 39.27 ac

SOIL CODE	SOIL DESCRIPTION	ACRES	%	CPI	NCCPI	CAP
SaF	Saffell gravelly fine sandy loam, 17 to 35 percent slopes	20.89	53.2	0	13	7e
OfB2	Ora fine sandy loam, 2 to 5 percent slopes, eroded	10.91	27.78	0	50	2e
Kn	Kinsey soils (mantachie)	5.6	14.26	0	60	2w
SaE	Saffell gravelly fine sandy loam, 8 to 17 percent slopes	0.99	2.52	0	55	4e
CaF	Cahaba fine sandy loam, 17 to 35 percent slopes (smithdale)	0.88	2.24	0	13	7e
TOTALS		39.27(*)	100%	-	31.04	4.82

(*) Total acres may differ in the second decimal compared to the sum of each acreage soil. This is due to a round error because we only show the acres of each soil with two decimal.

