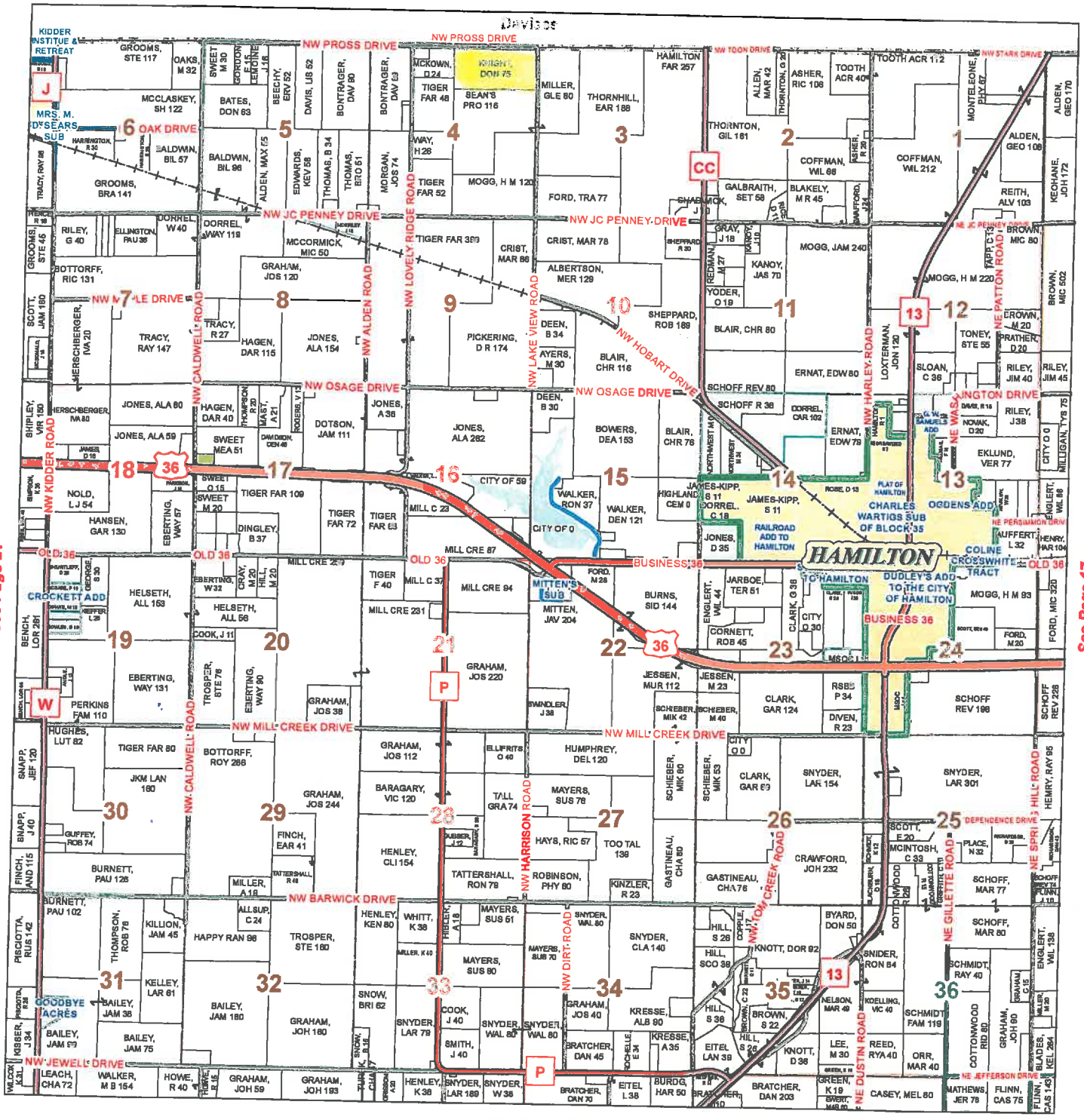


# T57N-R28W HAMILTON TOWNSHIP



See Page 21

See Page 17

See Page 25

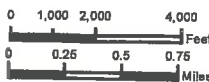
**Caldwell County Commission**  
C.R. "Bud" Motsinger - Presiding  
Donnie Cox - Eastern District  
Rex Hibler - Western District

Data Courtesy Caldwell County  
Geographic Information System  
Beverly Alden - Assessor / GIS Manager

Most parcels > 10 ac labeled  
© Copyright Caldwell County, MO

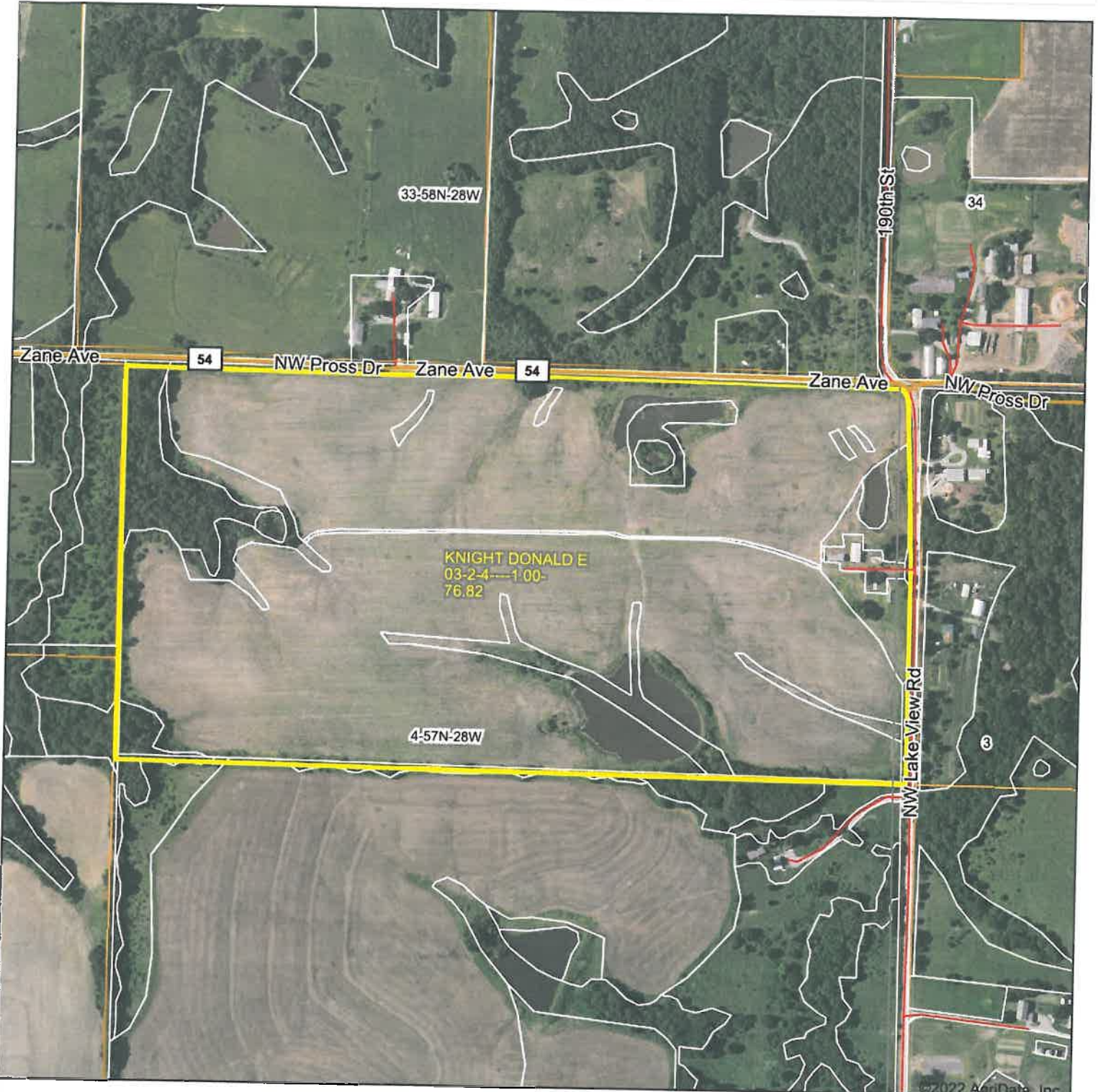
This Cadastral Map is for informational purposes only. It does not purport to represent a property boundary survey of the parcels shown and shall not be used for conveyances or the establishment of property boundaries.

GIS & Map Development By:



R29W   R28W   R27W   R26W		Legend			
T57N	04	05	02	01	US Highways
T56N	05	06	07	08	BT Highways
T55N	12	11	10	09	County Roads
					City Limits
					Township-Range
					Sections
					Political Township
					Leases
					Land Ownership
					Land Hooks
					Subdivisions
					Rail Roads
					Carriers
					Churches

# Aerial Map



©2022 AgriData, Inc.

Map Center: 39.784119, -94.044358



**United Country**

NELSON REAL ESTATE

Maps Provided By:



© AgriData, Inc. 2021 www.AgriDataInc.com

**4-57N-28W**  
**Caldwell County**  
**Missouri**



8/13/2022

Field borders provided by Farm Service Agency as of 5/21/2008.