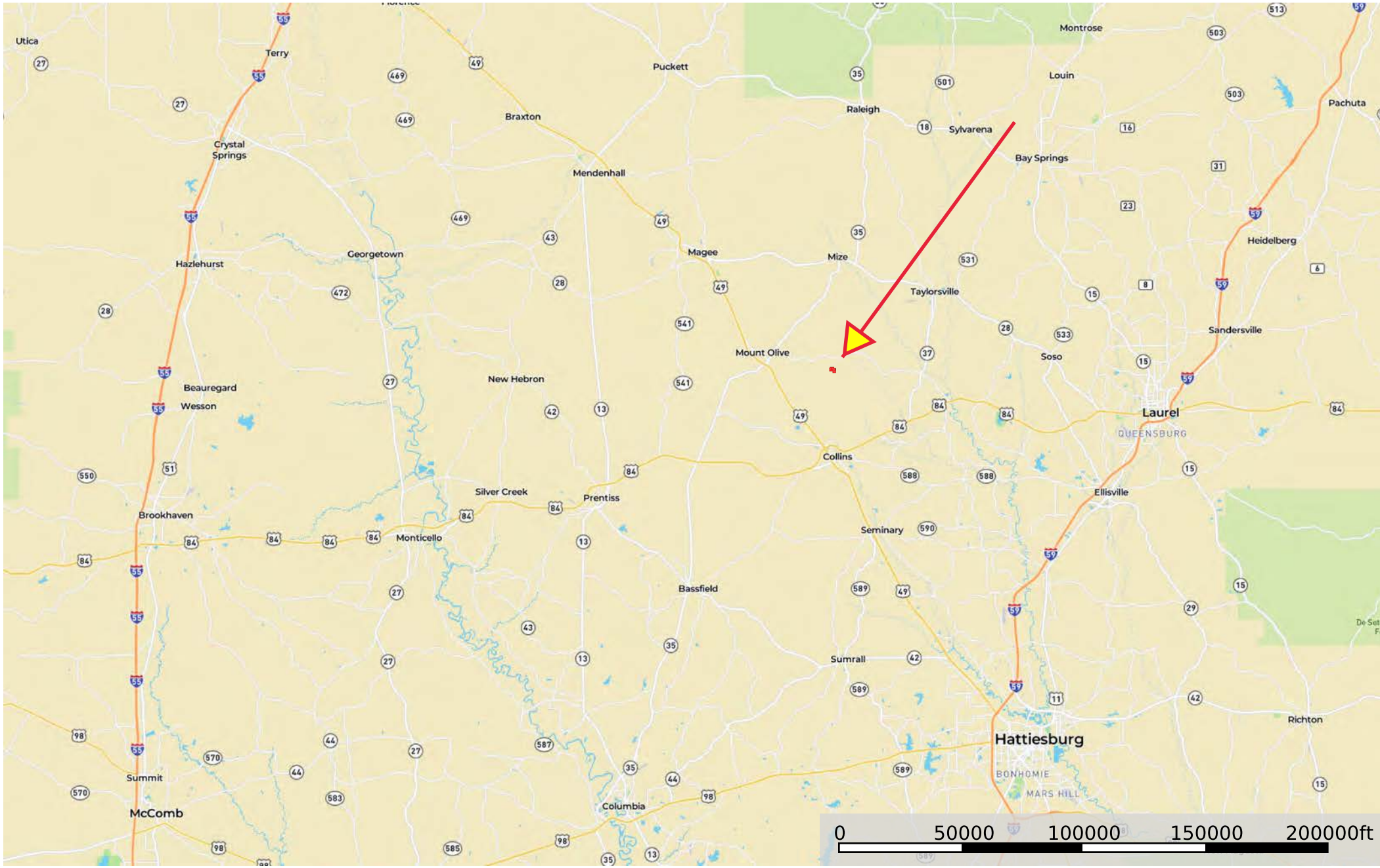
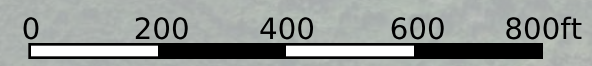
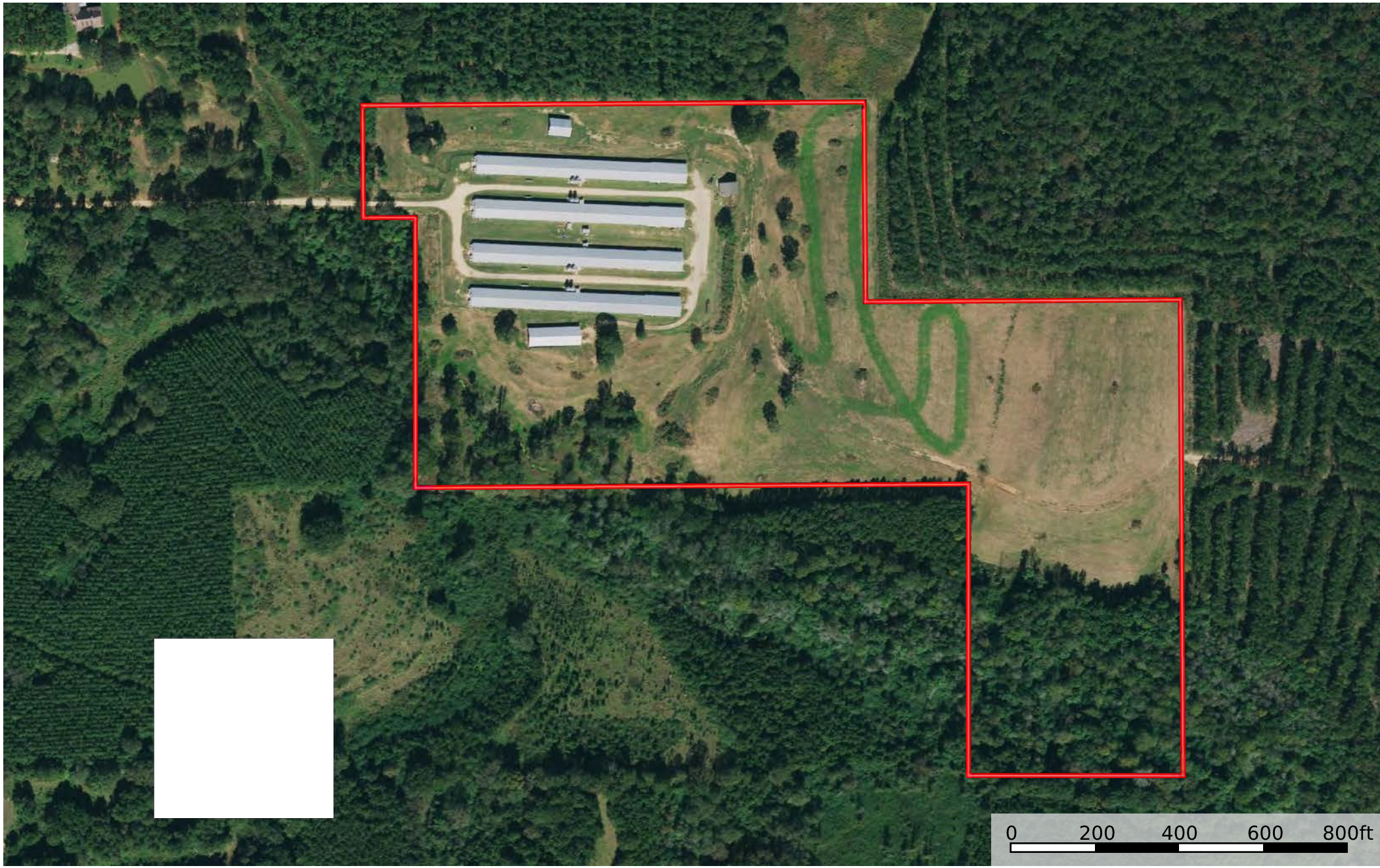


JD-Salem Church Rd 4 house broiler with 40 acres

Mississippi, AC +/-



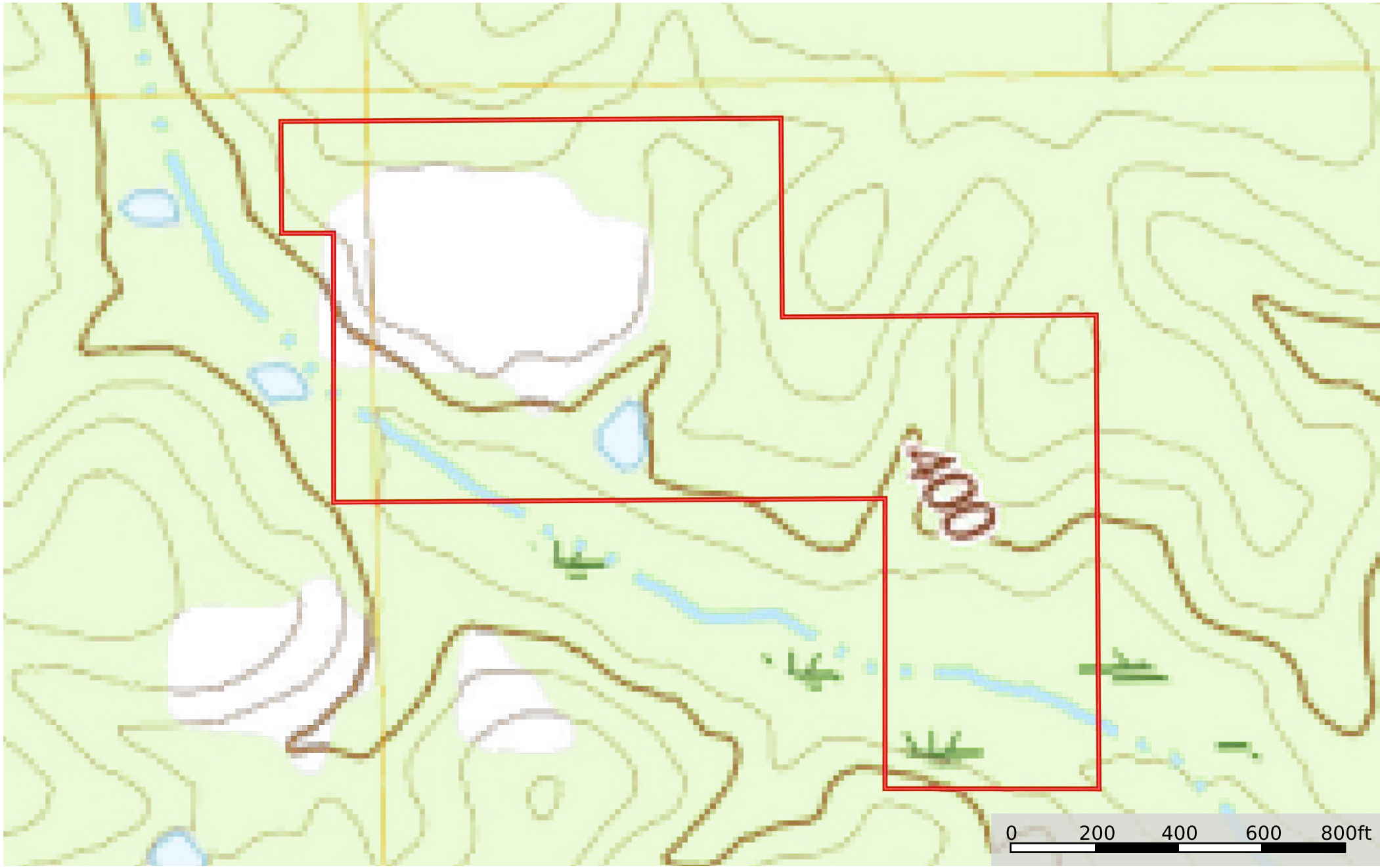
 Boundary



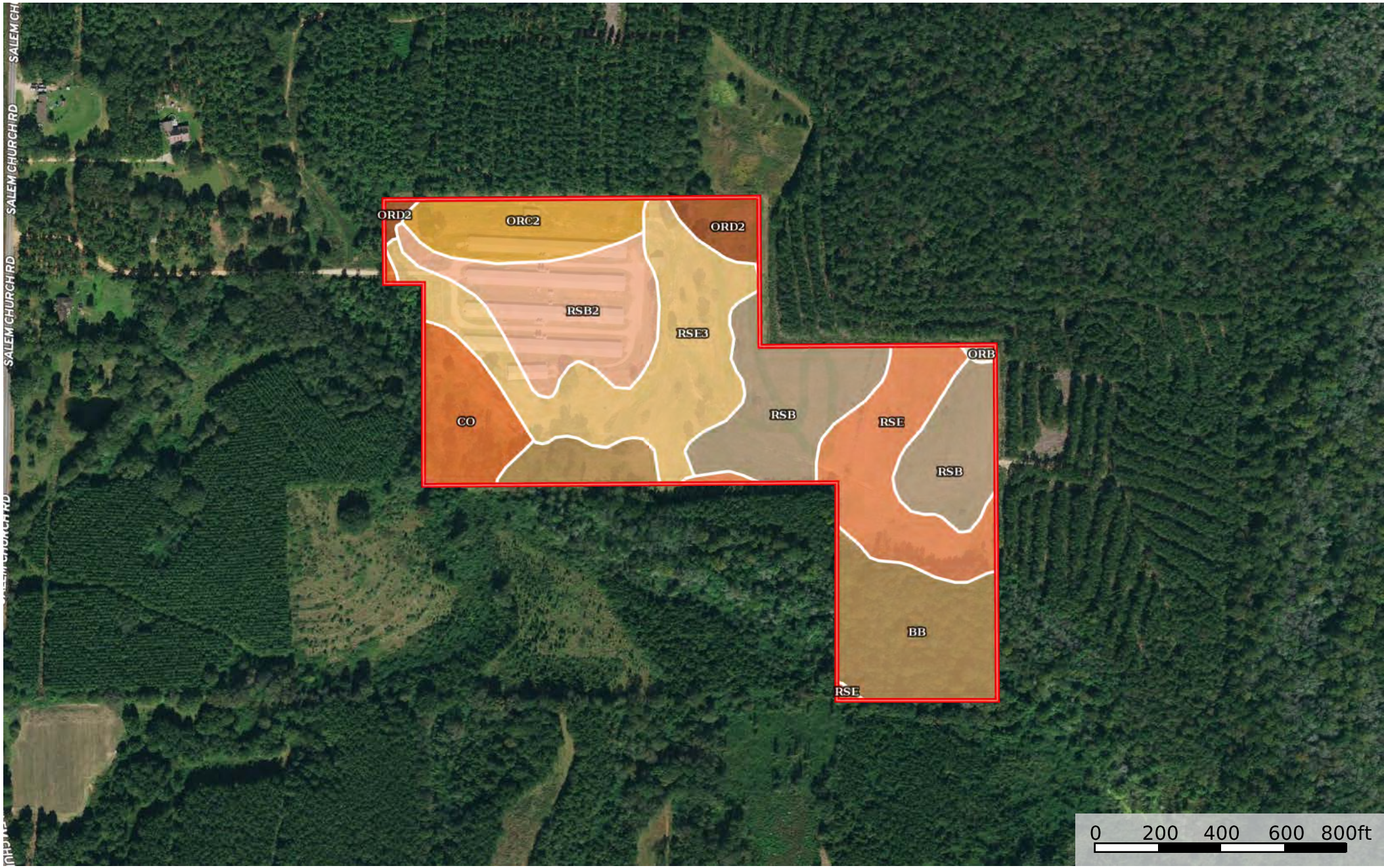
 Boundary

JD-Salem Church Rd 4 house broiler with 40 acres

Mississippi, AC +/-



 Boundary



 Boundary

Boundary 38.59 ac

SOIL CODE	SOIL DESCRIPTION	ACRES	%	CPI	NCCPI	CAP
RsE3	Ruston fine sandy loam, 12 to 17 percent slopes, severely eroded (smithdale)	7.75	20.09	0	47	7e
RsB	Ruston fine sandy loam, 2 to 5 percent slopes	7.11	18.43	0	72	2e
Bb	Bibb and Waverly soils (rosebloom, rosebloom)	6.39	16.56	0	57	5w
RsB2	Ruston fine sandy loam, 2 to 5 percent slopes, moderately eroded	5.08	13.17	0	57	2e
RsE	Ruston fine sandy loam, 12 to 17 percent slopes (smithdale)	5.03	13.04	0	53	6e
OrC2	Ora fine sandy loam, 5 to 8 percent slopes, eroded	3.02	7.83	0	39	3e
Co	Collins and luka soils (oaklimeter and jena)	2.89	7.49	0	64	2w
OrD2	Ora fine sandy loam, 8 to 12 percent slopes, eroded	1.2	3.11	0	41	4e
OrB	Ora fine sandy loam, 2 to 5 percent slopes	0.12	0.31	0	50	2e
TOTALS		38.58(*)	100%	-	55.84	4.16

(*) Total acres may differ in the second decimal compared to the sum of each acreage soil. This is due to a round error because we only show the acres of each soil with two decimal.

