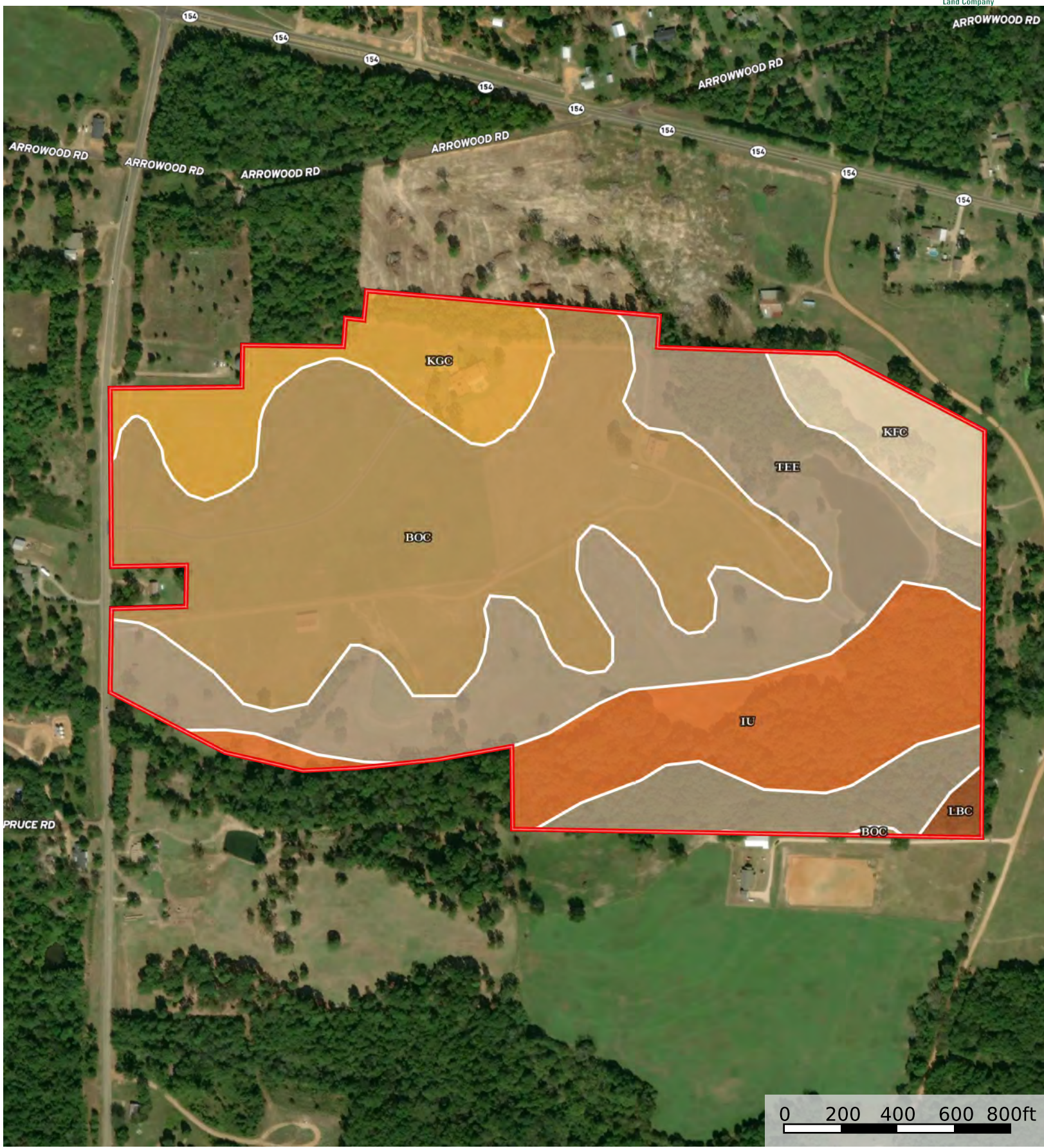



Luxury Cattle Ranch & Hay Farm for Sale Gilmer TX - Upshur County, Texas, 112 AC +/-



 Boundary

Boundary 111.77 ac

SOIL CODE	SOIL DESCRIPTION	ACRES	%	CPI	NCCPI	CAP
BoC	Bowie fine sandy loam, 1 to 5 percent slopes	42.96	38.44	0	80	3e
TeE	Tenaha loamy fine sand, 8 to 20 percent slopes	35.49	31.76	0	48	6e
Iu	Iulus fine sandy loam, 0 to 1 percent slopes, frequently flooded	16.38	14.66	0	73	5w
KgC	Kirvin gravelly fine sandy loam, 2 to 8 percent slopes	10.6	9.48	0	61	4e
KfC	Kirvin very fine sandy loam, 1 to 5 percent slopes	5.6	5.01	0	65	3e
LbC	Lilbert loamy fine sand, 2 to 5 percent slopes	0.74	0.66	0	50	3e
TOTALS		111.76(*)	100%	-	66.07	4.34

(*) Total acres may differ in the second decimal compared to the sum of each acreage soil. This is due to a round error because we only show the acres of each soil with two decimal.

