

All Measurements are
For FSA Programs Only

Sullivan Co. FSA

1:15,890



Wetland Determination Identifiers

Index for T-3589

- Restricted Use
- ▼ Limited Restrictions
- Exempt from Conservation Compliance Provisions

- C = Corn, YEL-GR
- SB = Soybn, COM-GR
- WHT = Wheat, HRW or SRW-GR
- Milo = Sorg, GRS-GR
- GZ = MixFg, LGM or IGS = Pasture
- FG = MixFg, LGM or IGS = Hay
- LS = Grass Left Standing, ILS
- ID = Idle

Program Year: 2022

Created: 4/29/2022

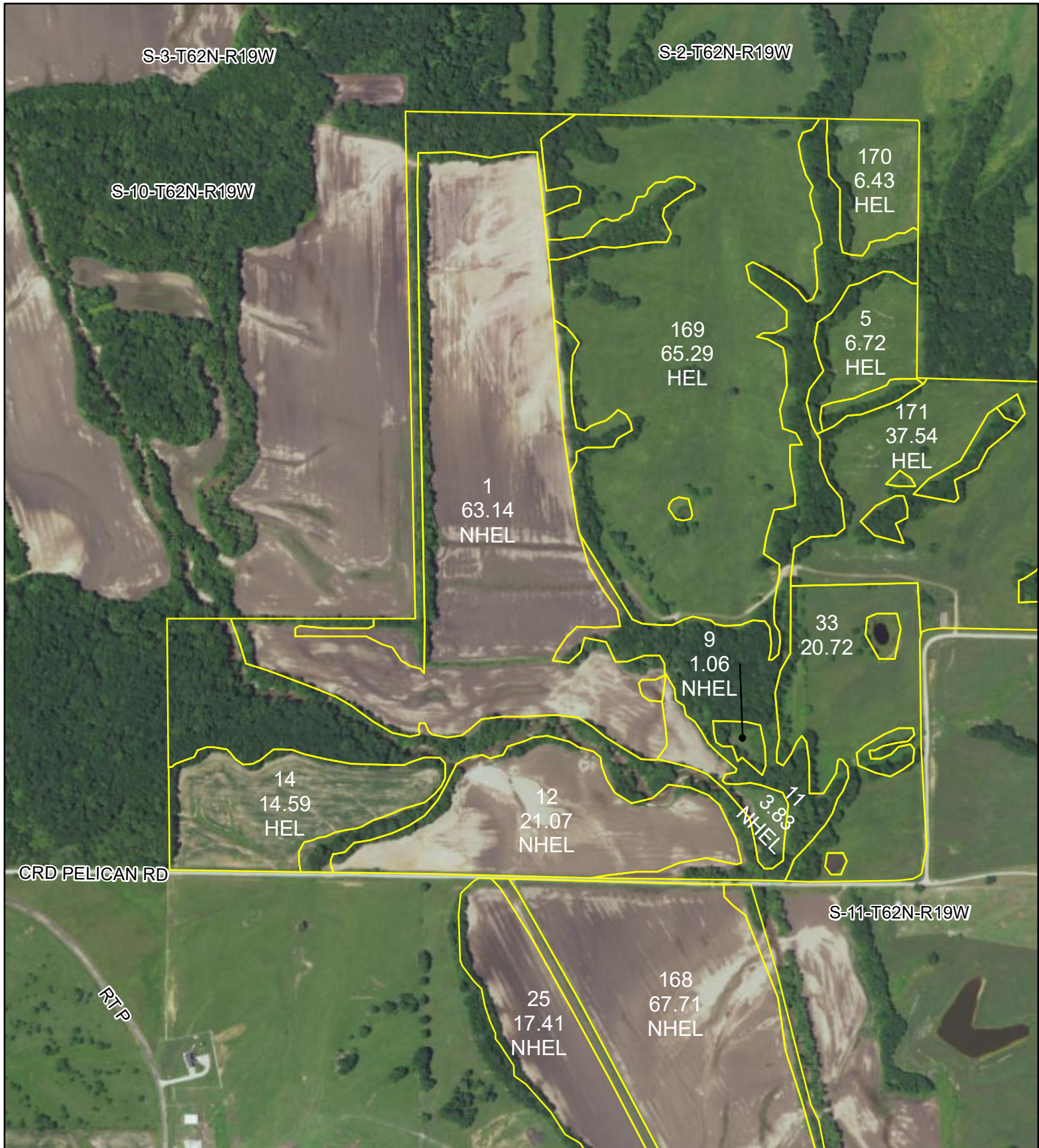
Flown: 2020-06-25

- clu
- crp
- Index

Farm 4048
Tract 3589

Disclaimer: Wetland identifiers do not represent the size, shape or specific determination of the area. Refer to your original determination (CPA-026 and attached maps) for exact wetland boundaries and determinations, or contact NRCS.

*Unless notated on Map



All Measurements are
For FSA Programs Only

Sullivan Co. FSA

1:7,920

Program Year: 2022

Created: 4/29/2022

Flown: 2020-06-25



Wetland Determination Identifiers

- Restricted Use
- ▼ Limited Restrictions
- Exempt from Conservation Compliance Provisions

Disclaimer: Wetland identifiers do not represent the size, shape or specific determination of the area. Refer to your original determination (CPA-026 and attached maps) for exact wetland boundaries and determinations, or contact NRCS.

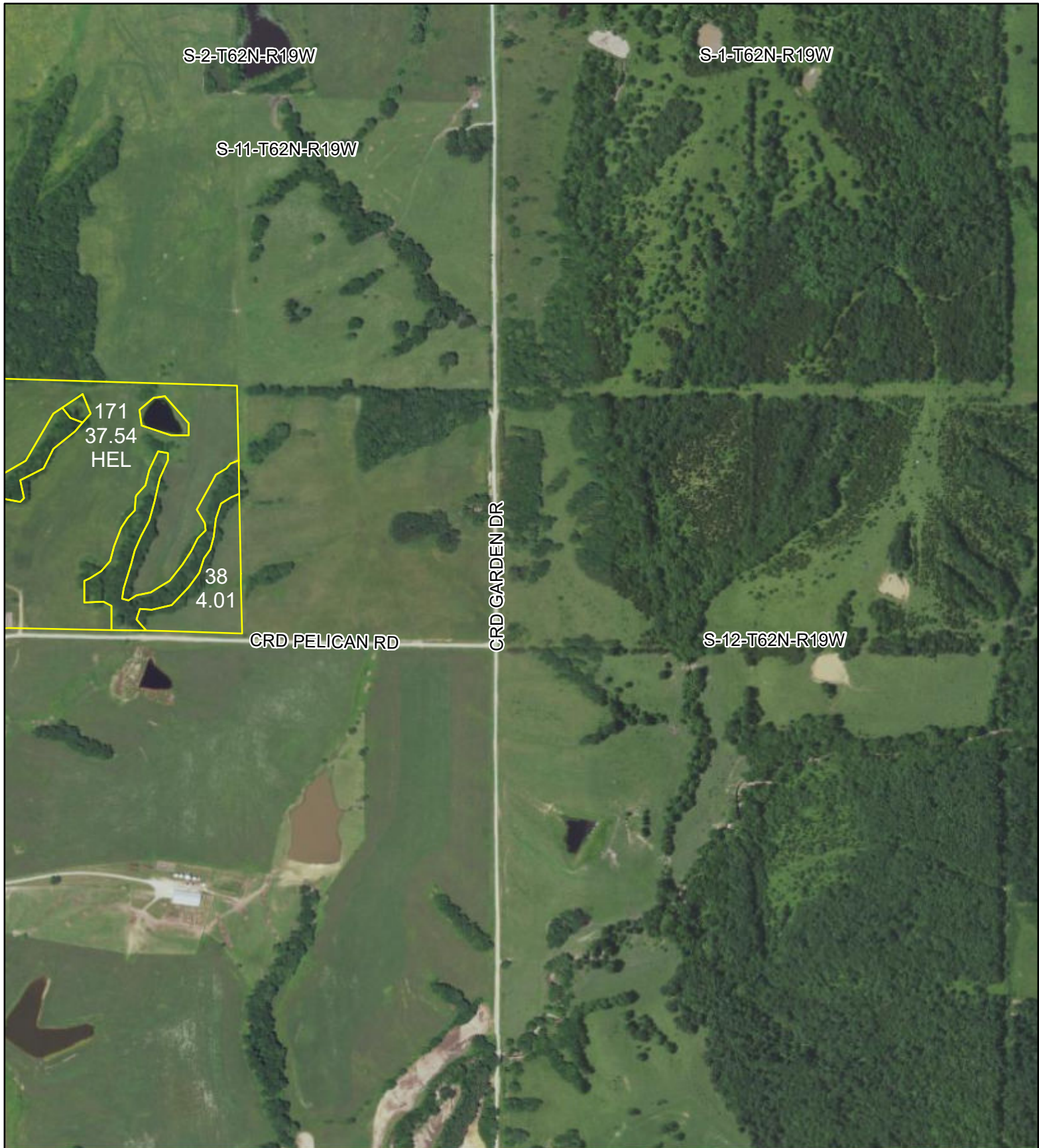
Pg 1 of 4 T-3589

- C = Corn, YEL-GR
- SB = Soybn, COM-GR
- WHT = Wheat, HRW or SRW-GR
- Milo = Sorg, GRS-GR
- GZ = MixFg, LGM or IGS = Pasture
- FG = MixFg, LGM or IGS = Hay
- LS = Grass Left Standing, ILS
- ID = Idle

*Unless notated on Map

- clu
- crp
- plss

Farm 4048
Tract 3589



All Measurements are
For FSA Programs Only

- Wetland Determination Identifiers**
- Restricted Use
 - ▼ Limited Restrictions
 - Exempt from Conservation Compliance Provisions

Disclaimer: Wetland identifiers do not represent the size, shape or specific determination of the area. Refer to your original determination (CPA-026 and attached maps) for exact wetland boundaries and determinations, or contact NRCS.

Pg 2 of 4 T-3589

Sullivan Co. FSA

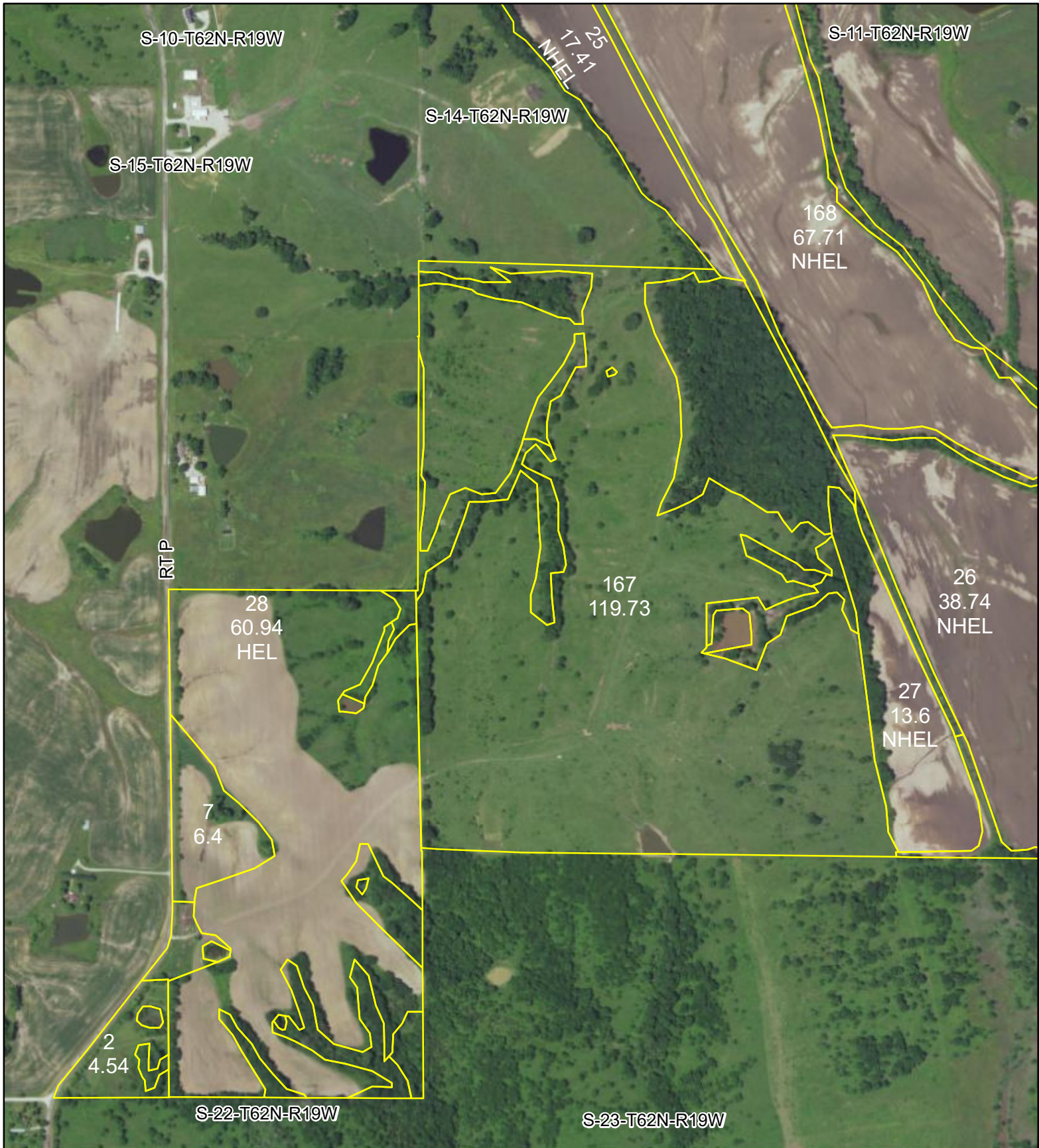
- C = Corn, YEL-GR
- SB = Soybn, COM-GR
- WHT = Wheat, HRW or SRW-GR
- Milo = Sorg, GRS-GR
- GZ = MixFg, LGM or IGS = Pasture
- FG = MixFg, LGM or IGS = Hay
- LS = Grass Left Standing, ILS
- ID = Idle
- *Unless notated on Map

1:7,920
Program Year: 2022
 Created: 4/29/2022
 Flown: 2020-06-25

- clu
- crp
- plss

Farm 4048
Tract 3589





All Measurements are
For FSA Programs Only

- Wetland Determination Identifiers**
- Restricted Use
 - ▼ Limited Restrictions
 - Exempt from Conservation Compliance Provisions

Disclaimer: Wetland identifiers do not represent the size, shape or specific determination of the area. Refer to your original determination (CPA-026 and attached maps) for exact wetland boundaries and determinations, or contact NRCS.

Pg 3 of 4 T-3589

Sullivan Co. FSA

- C = Corn, YEL-GR
 - SB = Soybn, COM-GR
 - WHT = Wheat, HRW or SRW-GR
 - Milo = Sorg, GRS-GR
 - GZ = MixFg, LGM or IGS = Pasture
 - FG = MixFg, LGM or IGS = Hay
 - LS = Grass Left Standing, ILS
 - ID = Idle
- *Unless notated on Map

1:7,920
Program Year: 2022
 Created: 4/29/2022
 Flown: 2020-06-25



clu
 crp
 plss **Farm 4048**
Tract 3589

S-11-T62N-R19W

S-12-T62N-R19W

168
67.71
NHEL

CRD RINGLE RD

S-14-T62N-R19W

26
38.74
NHEL

S-13-T62N-R19W

CRD GARDEN DR

27
13.6
NHEL

All Measurements are
For FSA Programs Only

Sullivan Co. FSA

1:7,920

Program Year: 2022

Created: 4/29/2022

Flown: 2020-06-25



Wetland Determination Identifiers

- Restricted Use
- ▼ Limited Restrictions
- Exempt from Conservation Compliance Provisions

Disclaimer: Wetland identifiers do not represent the size, shape or specific determination of the area. Refer to your original determination (CPA-026 and attached maps) for exact wetland boundaries and determinations, or contact NRCS.

Pg 4 of 4 T-3589

- C = Corn, YEL-GR
- SB = Soybn, COM-GR
- WHT = Wheat, HRW or SRW-GR
- Milo = Sorg, GRS-GR
- GZ = MixFg, LGM or IGS = Pasture
- FG = MixFg, LGM or IGS = Hay
- LS = Grass Left Standing, ILS
- ID = Idle

*Unless notated on Map



clu



crp

plss

Farm 4048

Tract 3589