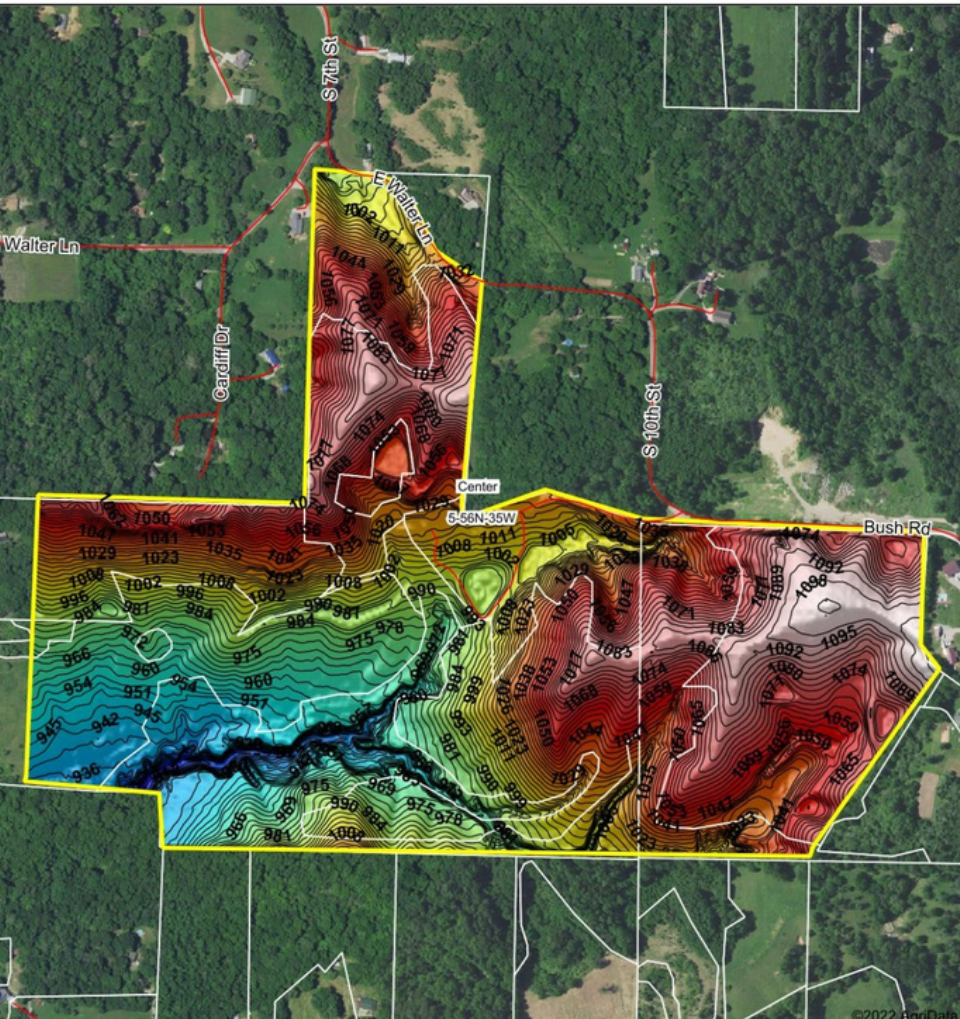


Topography Hillshade



Source: USGS 3 meter dem
 Interval(ft): 3
 Min: 899.7
 Max: 1,104.7
 Range: 205.0
 Average: 1,020.8
 Standard Deviation: 47.54 ft



5-56N-35W
Buchanan County
Missouri

map center:39° 41' 51.53, -94° 50' 55.69