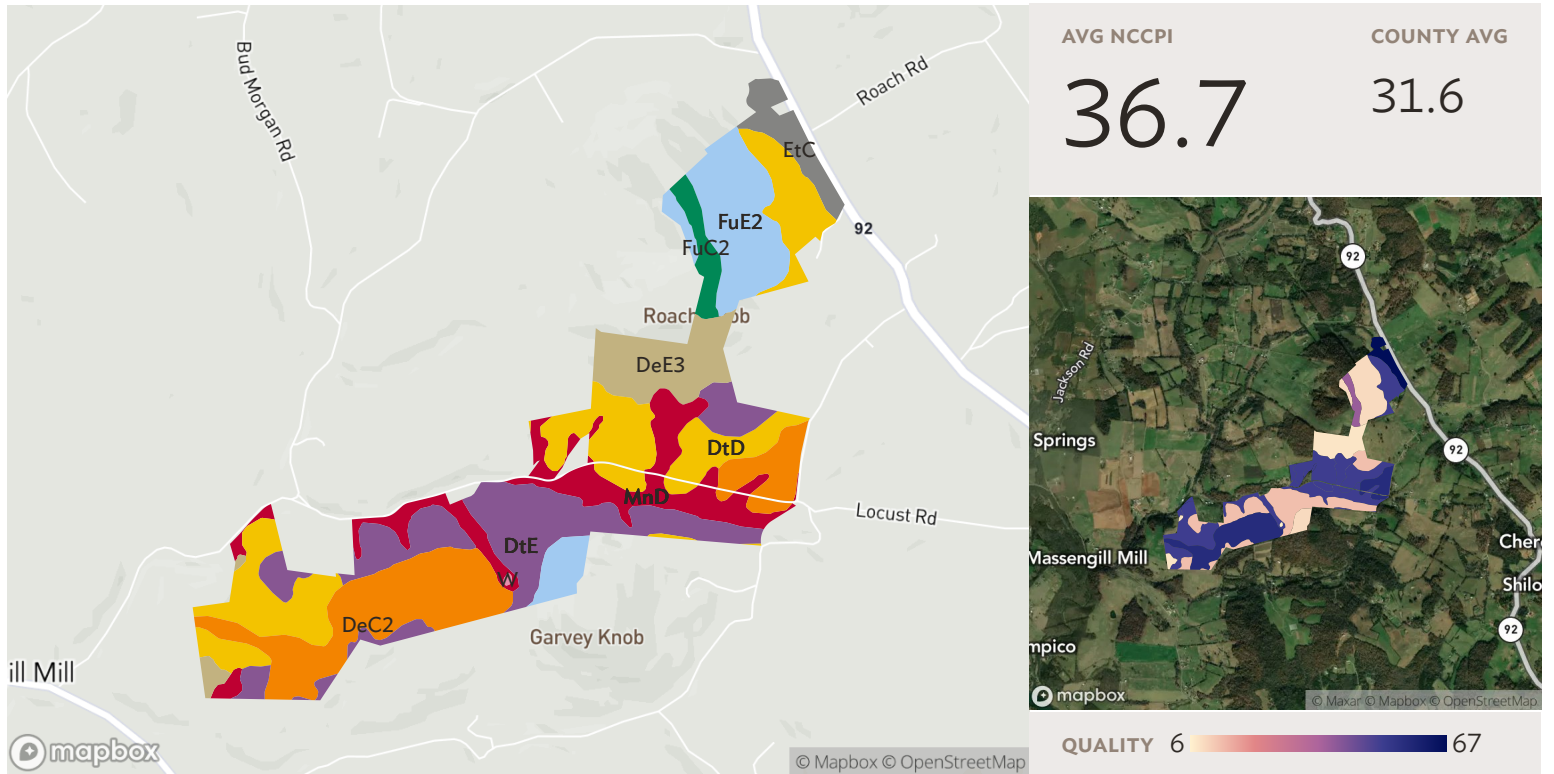


3 fields, 527 acres in Grainger County, TN



## All fields

527 ac.

Source: NRCS Soil Survey

SOIL CODE	SOIL DESCRIPTION	ACRES	PERCENTAGE OF FIELD	SOIL CLASS	NCCPI
DtD	Dewey-Etowah complex, 12 to 20 percent slopes	122.95	23.4%	4	51.4
DtE	Dewey-Etowah complex, 20 to 35 percent slopes	103.51	19.7%	6	13.0
DeC2	Dewey silt loam, 6 to 15 percent slopes, eroded	95.48	18.1%	3	57.1
FuE2	Fullerton gravelly loam, 20 to 35 percent slopes, eroded	66.14	12.6%	6	9.2
MnD	Minvale loam, 12 to 20 percent slopes	64.95	12.3%	4	51.4
DeE3	Dewey silty clay loam, 20 to 35 percent slopes, severely eroded	42.37	8.0%	6	7.7
EtC	Etowah silt loam, 6 to 12 percent slopes	18.83	3.6%	3	77.9
FuC2	Fullerton gravelly loam, 5 to 12 percent slopes, eroded	11.92	2.3%	3	39.2
W	Water	0.36	0.1%		N/A