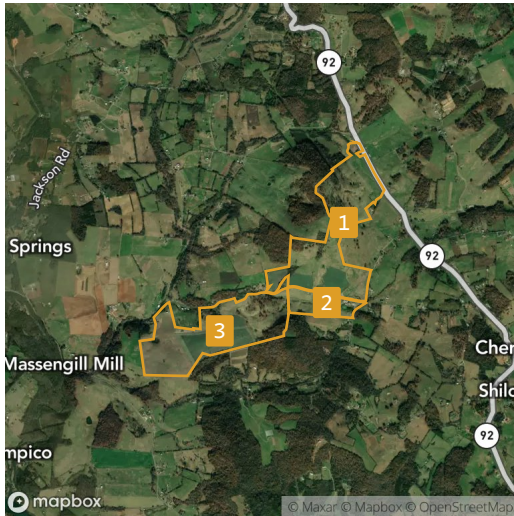


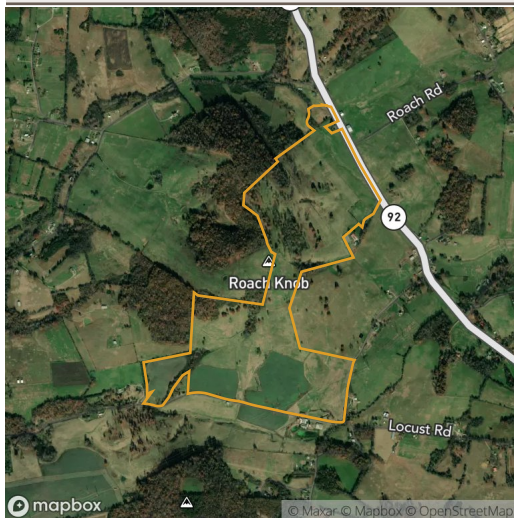
3 fields, 527 acres in Grainger County, TN



### All fields

527 ac.

	2020	2019	2018	2017	2016
Grass/Pasture	43.1%	49.1%	61.5%	61.8%	63.5%
Soybeans	33.1%	31.3%	20.7%	20.8%	18.3%
Forest	19.2%	16.5%	12.8%	12.7%	11.6%
Other	4.6%	3.1%	5.0%	4.7%	6.6%

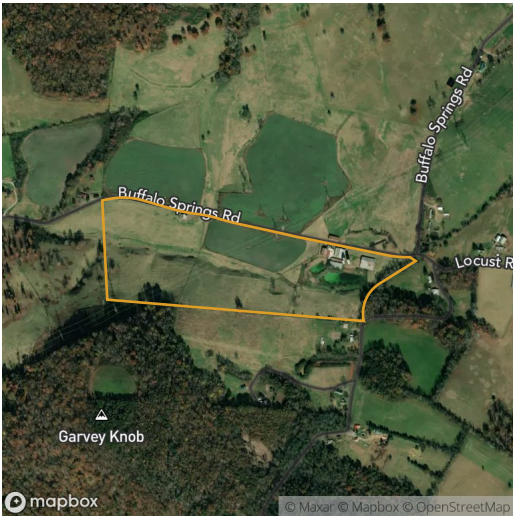


### Field 1

245 ac.

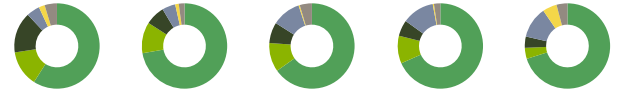
	2020	2019	2018	2017	2016
Grass/Pasture	61.0%	65.8%	70.2%	71.0%	71.4%
Soybeans	16.6%	16.7%	15.6%	15.8%	13.6%
Forest	18.1%	14.7%	11.7%	11.0%	10.7%
Other	4.3%	2.8%	2.5%	2.2%	4.3%

3 fields, 527 acres in Grainger County, TN

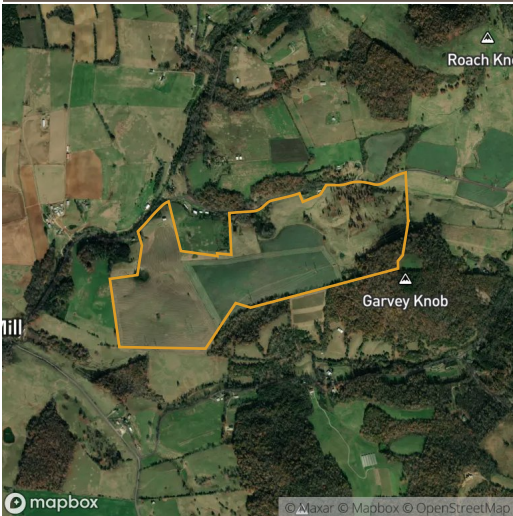


### Field 2

49 ac.



	2020	2019	2018	2017	2016
Grass/Pasture	59.0%	72.3%	65.2%	68.4%	70.1%
Soybeans	13.5%	11.8%	10.9%	10.5%	4.2%
Forest	15.5%	7.4%	7.9%	6.1%	4.3%
Developed	5.0%	5.0%	10.9%	12.2%	11.9%
Corn	2.3%	1.4%	0.5%	0.5%	5.4%
Other	4.7%	2.2%	4.6%	2.4%	4.1%



### Field 3

233 ac.



	2020	2019	2018	2017	2016
Soybeans	54.6%	50.8%	28.2%	28.2%	26.3%
Grass/Pasture	20.9%	26.6%	51.6%	50.7%	53.7%
Forest	21.0%	20.2%	14.9%	15.9%	14.1%
Other	3.4%	2.4%	5.3%	5.1%	5.8%

Source: NASS Cropland Data Layer