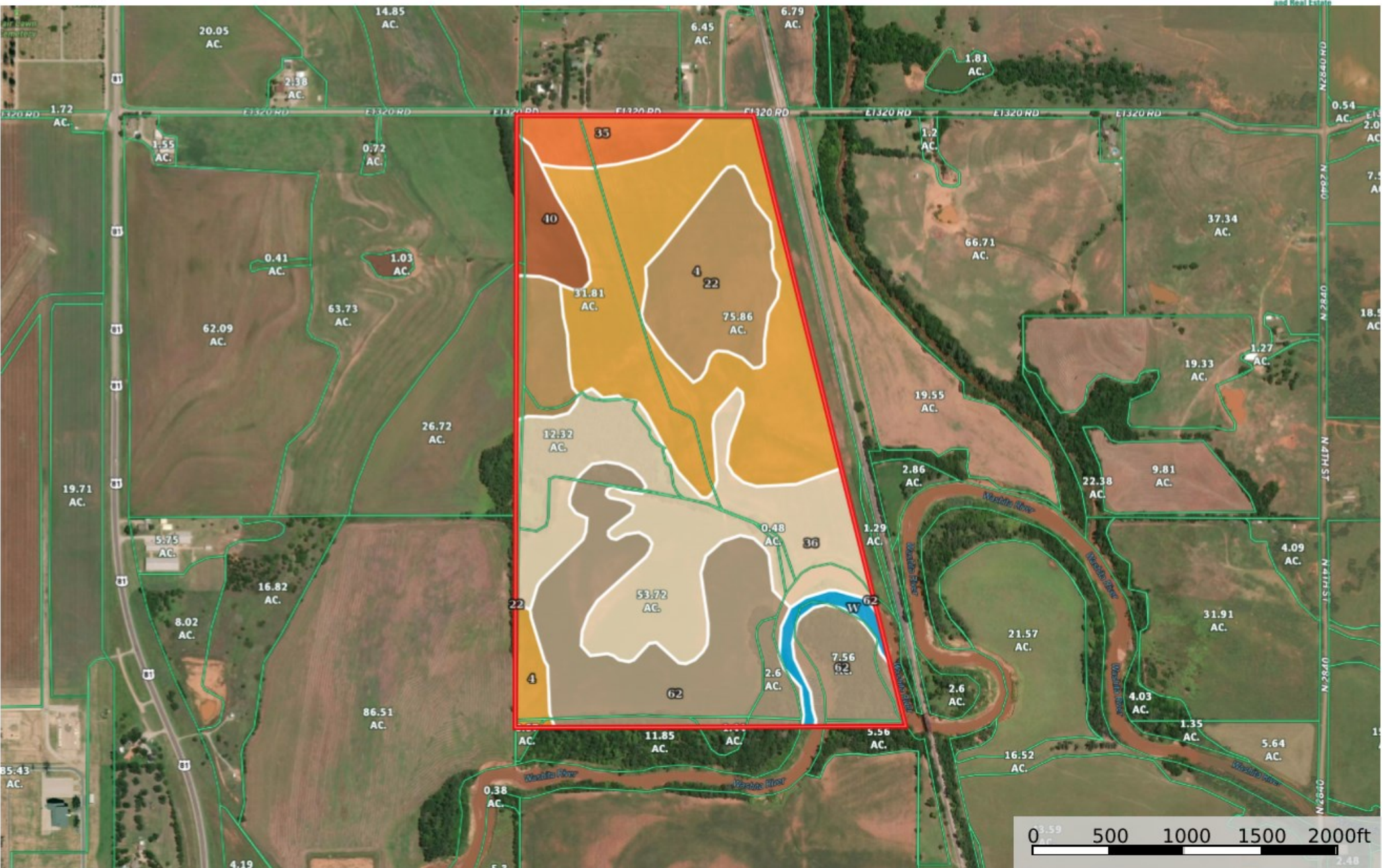


McCool - 188 acres
 Oklahoma, AC +/-



Boundary

Boundary 188.78 ac

SOIL CODE	SOIL DESCRIPTION	ACRES	%	CPI	NCCPI	CAP
4	Dale silt loam, 0 to 1 percent slopes, rarely flooded	53.15	28.15	0	71	1
36	Pocasset silty clay loam, 0 to 1 percent slopes, occasionally flooded	46.68	24.73	0	59	3e
62	Yahola fine sandy loam, 0 to 1 percent slopes, occasionally flooded	46.08	24.41	0	52	3e
22	McLain silty clay loam, 0 to 1 percent slopes, rarely flooded	25.82	13.68	0	57	1
35	Norge silt loam, 3 to 5 percent slopes, eroded	7.36	3.9	0	63	3e
40	Port silt loam, 0 to 1 percent slopes, occasionally flooded	6.56	3.47	0	74	2w
W	Water	3.13	1.66	0	-	8
TOTALS		188.78(*)	100%	-	60.1	2.21

(*) Total acres may differ in the second decimal compared to the sum of each acreage soil. This is due to a round error because we only show the acres of each soil with two decimal.

Capability Legend

Increased Limitations and Hazards

Decreased Adaptability and Freedom of Choice Users

Land, Capability



	1	2	3	4	5	6	7	8
'Wild Life'	•	•	•	•	•	•	•	•
Forestry	•	•	•	•	•	•	•	
Limited	•	•	•	•	•	•	•	
Moderate	•	•	•	•	•	•		
Intense	•	•	•	•	•			
Limited	•	•	•	•				
Moderate	•	•	•					
Intense	•	•						
Very Intense	•							

Grazing Cultivation

(c) climatic limitations (e) susceptibility to erosion

(s) soil limitations within the rooting zone (w) excess of water