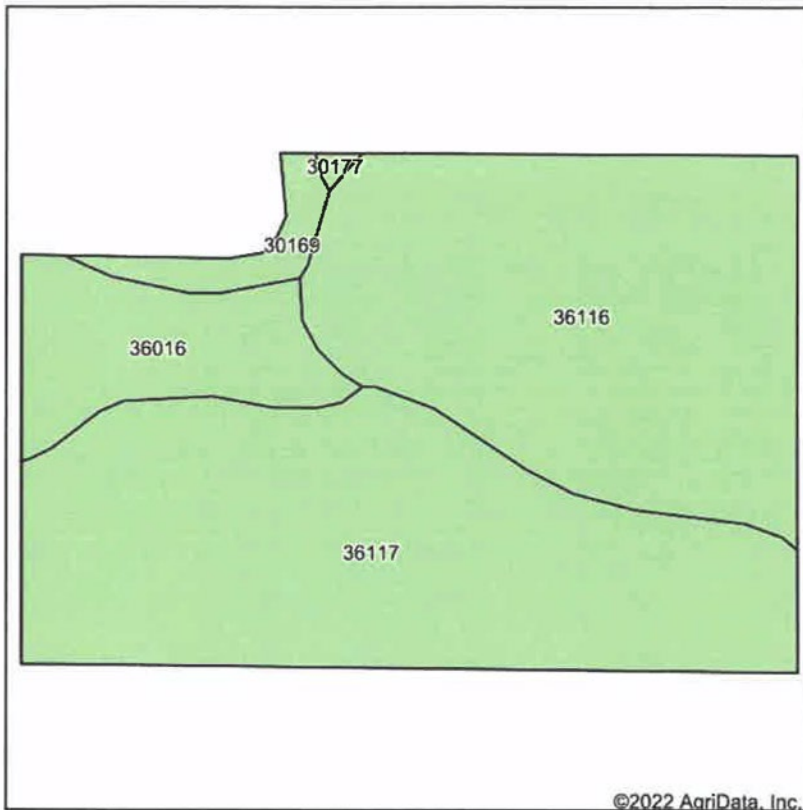


# Soils Map



State: **Missouri**  
 County: **Harrison**  
 Location: **26-64N-26W**  
 Township: **Trail Creek**  
 Acres: **54.33**  
 Date: **4/13/2022**



Maps Provided By:



Soils data provided by USDA and NRCS.

©2022 AgriData, Inc.

© AgriData, Inc. 2021

www.AgriDataInc.com

Area Symbol: MO081, Soil Area Version: 25

Code	Soil Description	Acres	Percent of field	Non-Irr Class *c	Caucasian bluestem Tons	Common bermudagrass Tons	Orchardgrass red clover Tons	Tall fescue Tons	Warm season grasses Tons
36117	Nodaway silt loam, heavy till, 0 to 2 percent slopes, occasionally flooded	25.01	46.0%	IIw					
36116	Zook silty clay loam, heavy till, 0 to 2 percent slopes, occasionally flooded	21.84	40.2%	IIw					
36016	Humeston silt loam, 0 to 2 percent slopes, occasionally flooded	5.83	10.7%	IIIw					
30169	Pershing silt loam, 5 to 9 percent slopes	1.51	2.8%	IIIe					
30177	Pershing silty clay loam, 5 to 9 percent slopes, severely eroded	0.14	0.3%	IVe	2	8	7	8	10
<b>Weighted Average</b>				<b>2.14</b>	<b>*-</b>	<b>*-</b>	<b>*-</b>	<b>*-</b>	<b>*-</b>

\*c: Using Capabilities Class Dominant Condition Aggregation Method