

TITLE REFERENCE:
 PLAT SHOWING 742 869 AC. TRACT IS ALL OF THAT PROPERTY ACQUIRED BY
 WILDERNESS LAND AND LUMBER CO., INC., AS DESCRIBED IN DEED BOOK 341,
 PAGE 674, ON RECORD IN THE CLERK'S OFFICE OF THE CIRCUIT COURT OF
 FLOYD COUNTY, VIRGINIA, IN WHICH THE ABOVE REFERRED TO DEED IS THE
 LAST INSTRUMENT IN THE CHAIN OF TITLE TO SAID LAND.
 VIRGINIA, IN THE CLERK'S OFFICE OF THE CIRCUIT COURT OF
 WYTHE COUNTY, _____ 2023 AT _____, IN THIS
 MAP RECEIVED IN OFFICE AND ADMITTED TO RECORD.

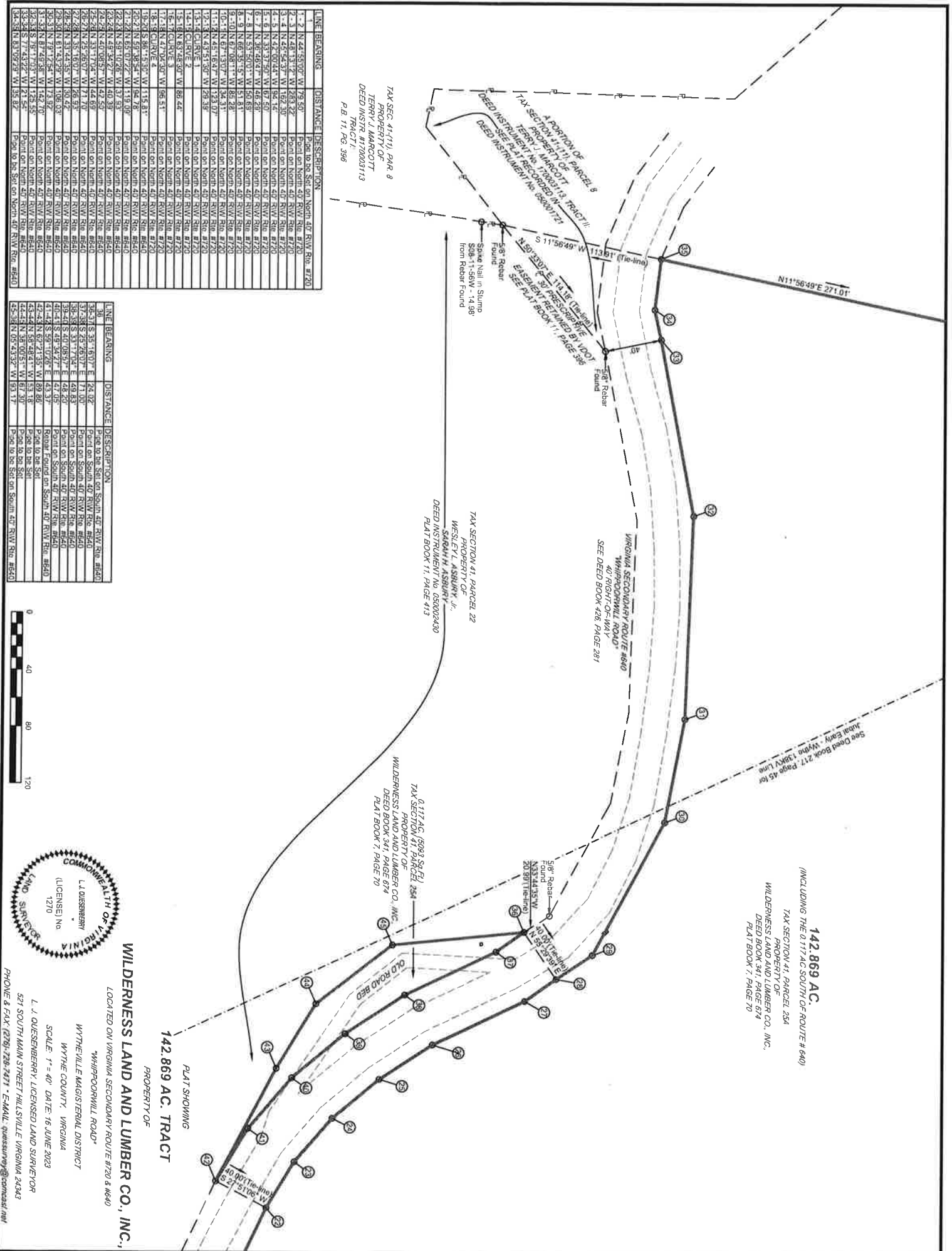
WYTHE COUNTY DEPUTY CLERK

PLAT SHOWING 742 869 AC. TRACT IS ALL OF THAT PROPERTY ACQUIRED BY
 WILDERNESS LAND AND LUMBER CO., INC., AS DESCRIBED IN DEED BOOK 341,
 PAGE 674, ON RECORD IN THE CLERK'S OFFICE OF THE CIRCUIT COURT OF
 FLOYD COUNTY, VIRGINIA, IN WHICH THE ABOVE REFERRED TO DEED IS THE
 LAST INSTRUMENT IN THE CHAIN OF TITLE TO SAID LAND.
 VIRGINIA, IN THE CLERK'S OFFICE OF THE CIRCUIT COURT OF
 WYTHE COUNTY, _____ 2023 AT _____, IN THIS
 MAP RECEIVED IN OFFICE AND ADMITTED TO RECORD.

DATE _____
 WILDERNESS LAND AND LUMBER CO., INC.
 HAN MICHAEL TURMAN - PRESIDENT



LINE	BEARING	DISTANCE	DESCRIPTION
1	N 11° 06' 35.14" W	101.17 (Tie)	Pipe to be set on South 40' R.V. Rte. #640
2	N 44° 55' 00.70" W	79.50	Point on North 40' R.V. Rte. #720
3	N 48° 13' 17.70" W	228.22	Point on North 40' R.V. Rte. #720
4	N 45° 52' 51.70" W	142.30	Point on North 40' R.V. Rte. #720
5	N 38° 57' 50.70" W	48.40	Point on North 40' R.V. Rte. #720
6	N 36° 48' 47.70" W	46.26	Point on North 40' R.V. Rte. #720
7	N 33° 57' 50.70" W	48.40	Point on North 40' R.V. Rte. #720
8	N 29° 50' 07.70" W	50.69	Point on North 40' R.V. Rte. #720
9	N 26° 55' 15.70" W	51.81	Point on North 40' R.V. Rte. #720
10	N 21° 07' 28.70" W	55.78	Point on North 40' R.V. Rte. #720
11	N 16° 15' 10.70" W	55.78	Point on North 40' R.V. Rte. #720
12	N 11° 06' 35.14" W	101.17 (Tie)	Point on North 40' R.V. Rte. #720
13	N 11° 06' 35.14" W	101.17 (Tie)	Point on North 40' R.V. Rte. #720
14	N 11° 06' 35.14" W	101.17 (Tie)	Point on North 40' R.V. Rte. #720
15	N 11° 06' 35.14" W	101.17 (Tie)	Point on North 40' R.V. Rte. #720
16	N 11° 06' 35.14" W	101.17 (Tie)	Point on North 40' R.V. Rte. #720
17	N 11° 06' 35.14" W	101.17 (Tie)	Point on North 40' R.V. Rte. #720
18	N 11° 06' 35.14" W	101.17 (Tie)	Point on North 40' R.V. Rte. #720
19	N 11° 06' 35.14" W	101.17 (Tie)	Point on North 40' R.V. Rte. #720
20	N 11° 06' 35.14" W	101.17 (Tie)	Point on North 40' R.V. Rte. #720
21	N 11° 06' 35.14" W	101.17 (Tie)	Point on North 40' R.V. Rte. #720
22	N 11° 06' 35.14" W	101.17 (Tie)	Point on North 40' R.V. Rte. #720
23	N 11° 06' 35.14" W	101.17 (Tie)	Point on North 40' R.V. Rte. #720
24	N 11° 06' 35.14" W	101.17 (Tie)	Point on North 40' R.V. Rte. #720
25	N 11° 06' 35.14" W	101.17 (Tie)	Point on North 40' R.V. Rte. #720
26	N 11° 06' 35.14" W	101.17 (Tie)	Point on North 40' R.V. Rte. #720
27	N 11° 06' 35.14" W	101.17 (Tie)	Point on North 40' R.V. Rte. #720
28	N 11° 06' 35.14" W	101.17 (Tie)	Point on North 40' R.V. Rte. #720
29	N 11° 06' 35.14" W	101.17 (Tie)	Point on North 40' R.V. Rte. #720
30	N 11° 06' 35.14" W	101.17 (Tie)	Point on North 40' R.V. Rte. #720
31	N 11° 06' 35.14" W	101.17 (Tie)	Point on North 40' R.V. Rte. #720
32	N 11° 06' 35.14" W	101.17 (Tie)	Point on North 40' R.V. Rte. #720
33	N 11° 06' 35.14" W	101.17 (Tie)	Point on North 40' R.V. Rte. #720
34	N 11° 06' 35.14" W	101.17 (Tie)	Point on North 40' R.V. Rte. #720
35	N 11° 06' 35.14" W	101.17 (Tie)	Point on North 40' R.V. Rte. #720
36	N 11° 06' 35.14" W	101.17 (Tie)	Point on North 40' R.V. Rte. #720
37	N 11° 06' 35.14" W	101.17 (Tie)	Point on North 40' R.V. Rte. #720
38	N 11° 06' 35.14" W	101.17 (Tie)	Point on North 40' R.V. Rte. #720
39	N 11° 06' 35.14" W	101.17 (Tie)	Point on North 40' R.V. Rte. #720
40	N 11° 06' 35.14" W	101.17 (Tie)	Point on North 40' R.V. Rte. #720
41	N 11° 06' 35.14" W	101.17 (Tie)	Point on North 40' R.V. Rte. #720
42	N 11° 06' 35.14" W	101.17 (Tie)	Point on North 40' R.V. Rte. #720
43	N 11° 06' 35.14" W	101.17 (Tie)	Point on North 40' R.V. Rte. #720
44	N 11° 06' 35.14" W	101.17 (Tie)	Point on North 40' R.V. Rte. #720
45	N 11° 06' 35.14" W	101.17 (Tie)	Point on North 40' R.V. Rte. #720



LINE	BEARING	DISTANCE	DESCRIPTION
1	N 24° 55' 00" W	79.50	Point on North 40° R/W Rte. #720
2	N 48° 13' 12" W	263.22	Point on North 40° R/W Rte. #720
3	N 45° 52' 37" W	162.30	Point on North 40° R/W Rte. #720
4	N 45° 52' 37" W	162.30	Point on North 40° R/W Rte. #720
5	N 45° 52' 37" W	162.30	Point on North 40° R/W Rte. #720
6	N 45° 52' 37" W	162.30	Point on North 40° R/W Rte. #720
7	N 36° 48' 41" W	46.20	Point on North 40° R/W Rte. #720
8	N 53° 50' 01" W	56.69	Point on North 40° R/W Rte. #720
9	N 66° 35' 15" W	51.81	Point on North 40° R/W Rte. #720
10	N 67° 08' 11" W	85.28	Point on North 40° R/W Rte. #720
11	N 67° 13' 07" W	34.31	Point on North 40° R/W Rte. #720
12	N 67° 13' 07" W	34.31	Point on North 40° R/W Rte. #720
13	N 67° 13' 07" W	34.31	Point on North 40° R/W Rte. #720
14	N 67° 13' 07" W	34.31	Point on North 40° R/W Rte. #720
15	N 67° 13' 07" W	34.31	Point on North 40° R/W Rte. #720
16	N 67° 13' 07" W	34.31	Point on North 40° R/W Rte. #720
17	N 67° 13' 07" W	34.31	Point on North 40° R/W Rte. #720
18	N 67° 13' 07" W	34.31	Point on North 40° R/W Rte. #720
19	N 67° 13' 07" W	34.31	Point on North 40° R/W Rte. #720
20	N 67° 13' 07" W	34.31	Point on North 40° R/W Rte. #720
21	N 67° 13' 07" W	34.31	Point on North 40° R/W Rte. #720
22	N 67° 13' 07" W	34.31	Point on North 40° R/W Rte. #720
23	N 67° 13' 07" W	34.31	Point on North 40° R/W Rte. #720
24	N 67° 13' 07" W	34.31	Point on North 40° R/W Rte. #720
25	N 67° 13' 07" W	34.31	Point on North 40° R/W Rte. #720
26	N 67° 13' 07" W	34.31	Point on North 40° R/W Rte. #720
27	N 67° 13' 07" W	34.31	Point on North 40° R/W Rte. #720
28	N 67° 13' 07" W	34.31	Point on North 40° R/W Rte. #720
29	N 67° 13' 07" W	34.31	Point on North 40° R/W Rte. #720
30	N 67° 13' 07" W	34.31	Point on North 40° R/W Rte. #720
31	N 67° 13' 07" W	34.31	Point on North 40° R/W Rte. #720
32	N 67° 13' 07" W	34.31	Point on North 40° R/W Rte. #720
33	N 67° 13' 07" W	34.31	Point on North 40° R/W Rte. #720
34	N 67° 13' 07" W	34.31	Point on North 40° R/W Rte. #720
35	N 67° 13' 07" W	34.31	Point on North 40° R/W Rte. #720
36	N 67° 13' 07" W	34.31	Point on North 40° R/W Rte. #720
37	N 67° 13' 07" W	34.31	Point on North 40° R/W Rte. #720
38	N 67° 13' 07" W	34.31	Point on North 40° R/W Rte. #720
39	N 67° 13' 07" W	34.31	Point on North 40° R/W Rte. #720
40	N 67° 13' 07" W	34.31	Point on North 40° R/W Rte. #720

LINE	BEARING	DISTANCE	DESCRIPTION
36	N 67° 13' 07" W	34.31	Point on North 40° R/W Rte. #720
37	N 67° 13' 07" W	34.31	Point on North 40° R/W Rte. #720
38	N 67° 13' 07" W	34.31	Point on North 40° R/W Rte. #720
39	N 67° 13' 07" W	34.31	Point on North 40° R/W Rte. #720
40	N 67° 13' 07" W	34.31	Point on North 40° R/W Rte. #720
41	N 67° 13' 07" W	34.31	Point on North 40° R/W Rte. #720
42	N 67° 13' 07" W	34.31	Point on North 40° R/W Rte. #720
43	N 67° 13' 07" W	34.31	Point on North 40° R/W Rte. #720
44	N 67° 13' 07" W	34.31	Point on North 40° R/W Rte. #720
45	N 67° 13' 07" W	34.31	Point on North 40° R/W Rte. #720
46	N 67° 13' 07" W	34.31	Point on North 40° R/W Rte. #720
47	N 67° 13' 07" W	34.31	Point on North 40° R/W Rte. #720
48	N 67° 13' 07" W	34.31	Point on North 40° R/W Rte. #720
49	N 67° 13' 07" W	34.31	Point on North 40° R/W Rte. #720
50	N 67° 13' 07" W	34.31	Point on North 40° R/W Rte. #720
51	N 67° 13' 07" W	34.31	Point on North 40° R/W Rte. #720
52	N 67° 13' 07" W	34.31	Point on North 40° R/W Rte. #720
53	N 67° 13' 07" W	34.31	Point on North 40° R/W Rte. #720
54	N 67° 13' 07" W	34.31	Point on North 40° R/W Rte. #720
55	N 67° 13' 07" W	34.31	Point on North 40° R/W Rte. #720
56	N 67° 13' 07" W	34.31	Point on North 40° R/W Rte. #720
57	N 67° 13' 07" W	34.31	Point on North 40° R/W Rte. #720
58	N 67° 13' 07" W	34.31	Point on North 40° R/W Rte. #720
59	N 67° 13' 07" W	34.31	Point on North 40° R/W Rte. #720
60	N 67° 13' 07" W	34.31	Point on North 40° R/W Rte. #720

142.869 AC.
 (INCLUDING THE 0.117 AC SOUTH OF ROUTE # 640)
 TAX SECTION 41, PARCEL 254
 PROPERTY OF
 WILDERNESS LAND AND LUMBER CO., INC.
 DEED INSTRUMENT NO. 200002420
 PLAT BOOK 7, PAGE 70

WILDERNESS LAND AND LUMBER CO., INC.
 LOCATED ON VIRGINIA SECONDARY ROUTE #720 & #640
 "WHIPPOORWILL ROAD"
 WYTHEVILLE MAGISTERIAL DISTRICT
 WYTHE COUNTY, VIRGINIA
 SCALE: 1" = 40'
 DATE: 16 JUNE 2023
 L. J. QUENSENBERRY, LICENSED LAND SURVEYOR
 527 SOUTH MAIN STREET HILLSVILLE VIRGINIA 24343
 PHONE & FAX: (781) 228-7271 • EMAIL: quensenberry@comcast.net