

OF NORTH ARKANSAS

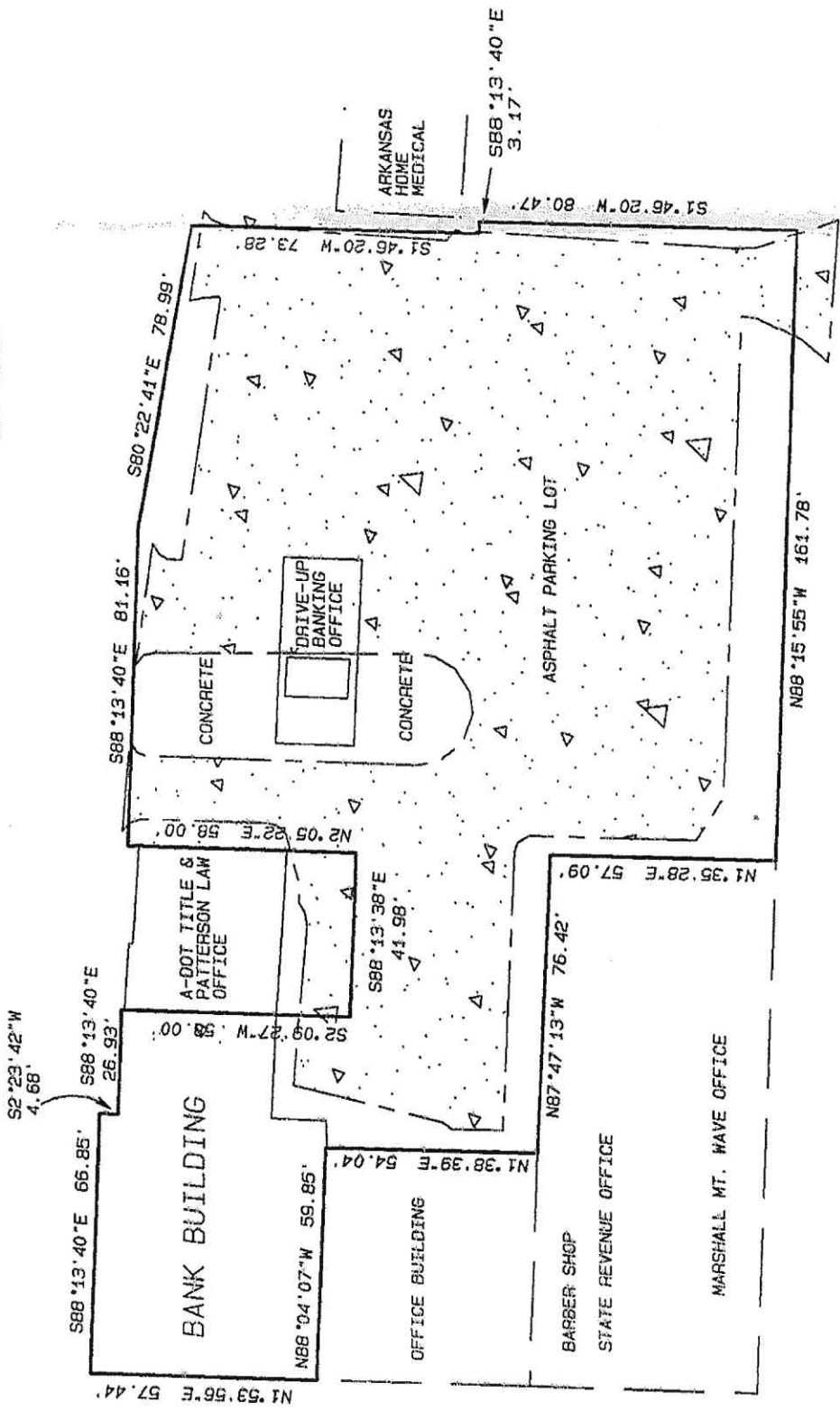
PART OF BLOCK 8, ORIGINAL TOWN OF MARSHALL
 (PART SE 1/4 SE 1/4 SECTION 25 T15N R16W)
 201 SOUTH HIGHWAY 27 MARSHALL, AR 72650
 SEARCY COUNTY, ARKANSAS - 0.81 ACRES

December 19, 2011 - Project no. 11041 - Field Book 11-02



LEGEND

- SUBJECT BOUNDARY
- EDGE OF ASPHALT
- LOT LINES



REF
 pro
 the
 and
 and
 pre
 pro
 fou
 blo
 dir
 Cou
 the
 eas
 Ark
 by
 or i
 to
 bui
 dra
 loc
 on
 its
 Bld
 typ
 for
 inc
 lin
 ext
 cor
 cla
 her
 own
 pro
 acc

NOTES

- 1) Bearings based on Plat Book 3 page 331.
- 2) Reference: Title Commitment 11-7385; Deed Bk. 152 pg. 266 (Union Planters Bank to Hudspeth); Deed Bk. 102 pg. 267 (Hudspeth to Union Planters Bank); Old maps of Town of Marshall.

SURVEYOR'S CERTIFICATION

I certify this plat to correctly depict a survey I completed on September 9, 2011, and the features and monuments to be as shown.