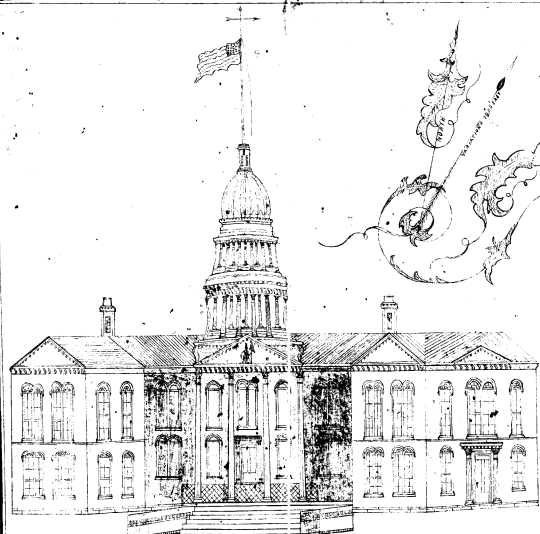


Received and filed in the County Clerk's office, Madison County, Mo.
on July 8th A.D. 1868.
K. J. Davis
County Clerk

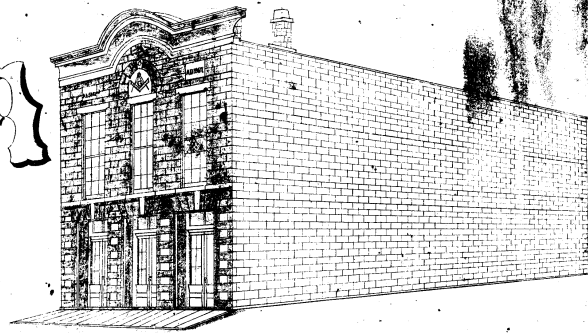


CAPITOL

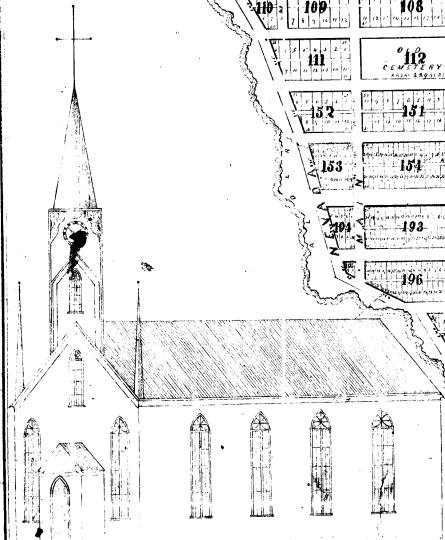
CITY OF MONTANA

Established July 1863.

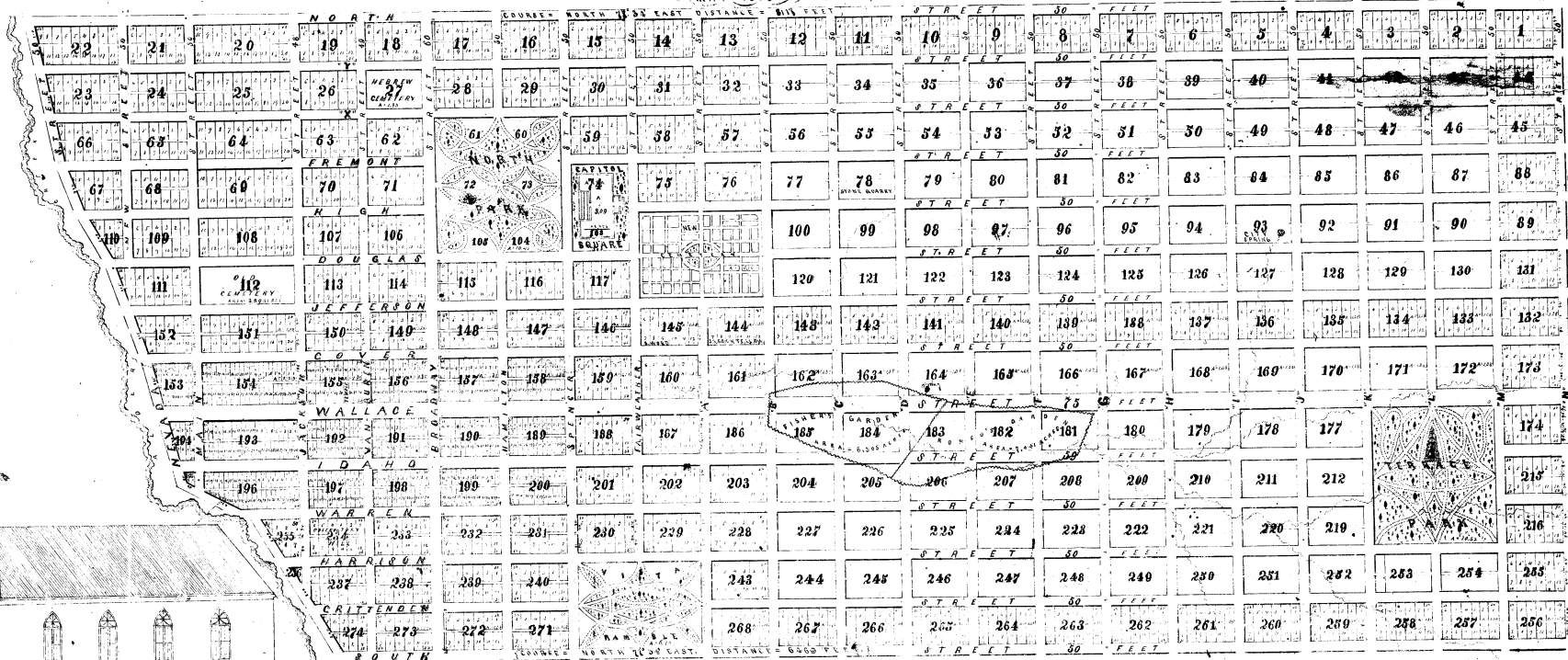
Surveyed & Drawn By J. CORBETT, Civil Engineer.
By Order of the CITY COUNCIL.
MAY 1868.



MASONIC TEMPLE



EPISCOPAL CHURCH



TOTAL AREA = 510 ACRES