

NUMBERS 1 THROUGH 15:

BEARING	DISTANCE
S 27°27' 38"W	429.44'
S 83°48' 57"W	94.20'
N 79°50' 05"W	444.57'
N 53°32' 39"W	175.00'
N 61°58' 49"W	54.67'
N 87°45' 49"W	186.76'

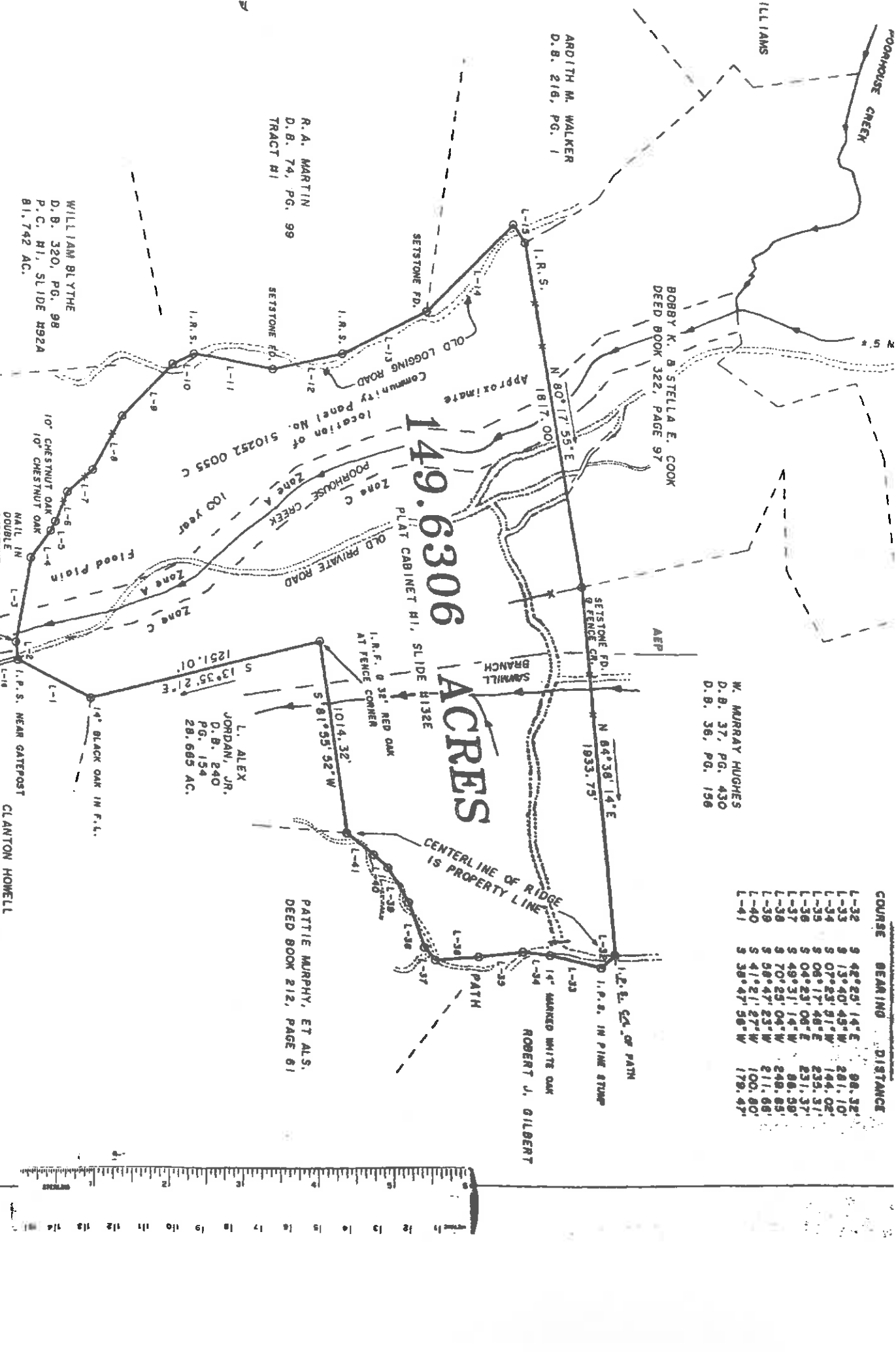
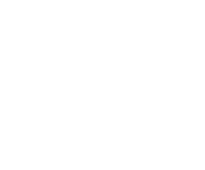
WILLIAM BLYTHE
D.B. 320, PG. 98
P.C. M.I. SLIDE M92A
81,742 AC.

SHELLTON
D.B. 324
PG. 856
26 AC.

CLANTON HONEILL
D.B. 300, PG. 112

15' ACCESS EASEMENT:

COURSE	BEARING	DISTANCE
L-16	S 15°18' 58"E	158.76'
L-17	S 06°29' 18"E	40.04'
L-18	S 08°04' 15"W	82.31'
L-19	S 10°58' 57"E	47.58'



COURSE	BEARING	DISTANCE
L-32	S 42°29' 14"E	98.32'
L-33	S 13°40' 45"W	281.10'
L-34	S 07°23' 31"W	144.02'
L-35	S 06°17' 48"E	235.31'
L-36	S 04°23' 08"E	231.37'
L-37	S 49°31' 14"W	88.59'
L-38	S 70°25' 04"W	248.85'
L-39	S 58°47' 23"W	211.68'
L-40	S 41°21' 27"W	100.80'
L-41	S 38°47' 58"W	179.47'

L. ALEX
JORDAN, JR.
D.B. 240
PG. 154
28,685 AC.

PATTIE MURPHY, ET ALS.
DEED BOOK 212, PAGE 61

ROBERT J. GILBERT

W. MURRAY HUGHES
D.B. 37, PG. 430
D.B. 36, PG. 198

Bobby K. & Stella E. Cook
DEED BOOK 322, PAGE 97

R.A. MARTIN
D.B. 74, PG. 99

ARDITH M. WALKER
D.B. 216, PG. 1

ILLIAMS

POORHOUSE CREEK