



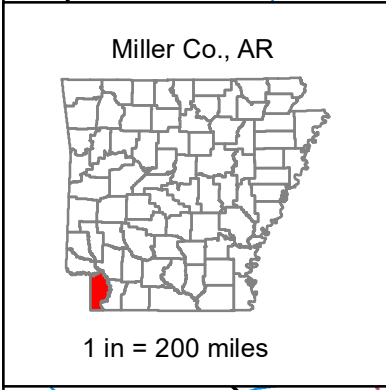
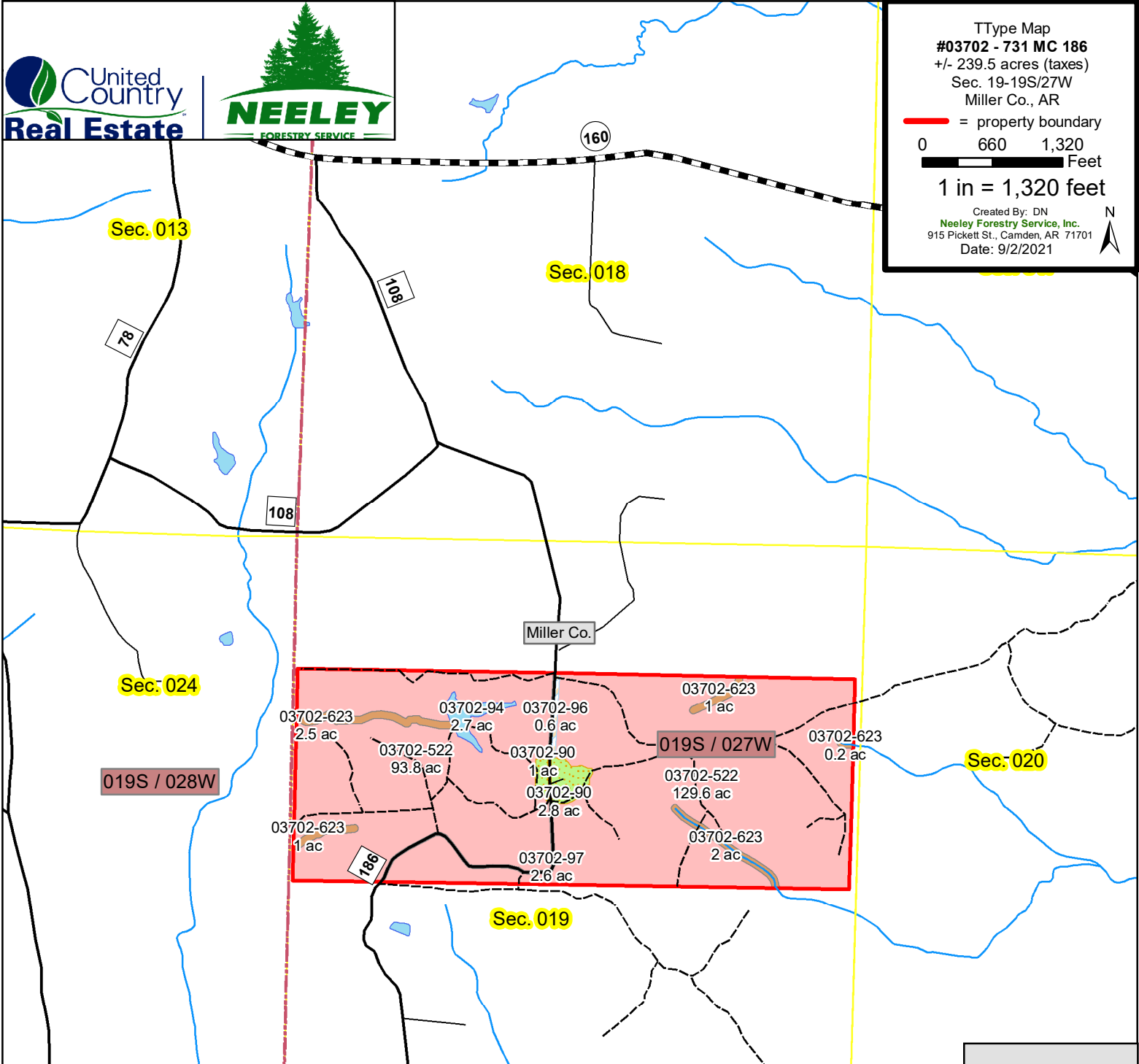
TType Map
#03702 - 731 MC 186
 +/- 239.5 acres (taxes)
 Sec. 19-19S/27W
 Miller Co., AR

— = property boundary

0 660 1,320
 Feet

1 in = 1,320 feet

Created By: DN
 Neeley Forestry Service, Inc.
 915 Pickett St., Camden, AR 71701
 Date: 9/2/2021



Although created with data believed to be correct, neither the accuracy nor completeness of this map are guaranteed in any manner by the seller, the seller's agents, or managers. This map is provided herein merely as an aid to prospective buyers. Prospective buyers should verify information for themselves.

StandID

- Mostly Pine, Upland (+/- 223.4 ac)
- Mostly Hardwood, Drain (+/- 6.8 ac)
- Home / Yard Site (+/- 3.8 ac)
- Pond / Water (+/- 2.7 ac)
- Utility Line RoW (+/- 0.6 ac)
- Public Road (+/- 2.6 ac)

Legend

- Railway
- Woods/Roads
- AR_Transportation**
- Streets/Roads
- RTTYP**
- County Road
- State Hwy
- US Hwy
- Interstate
- County
- Township/Range
- Section
- Ponds/Lakes
- Stream/River
- City Limits
- Public Land
- MillerRD186_Tract