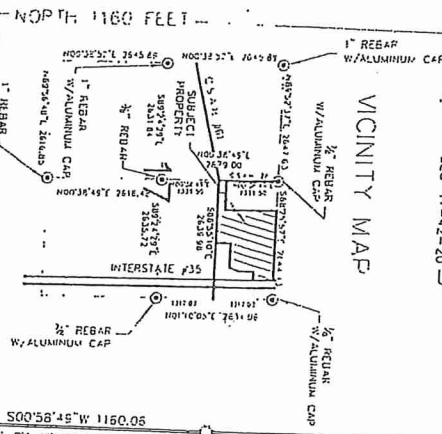


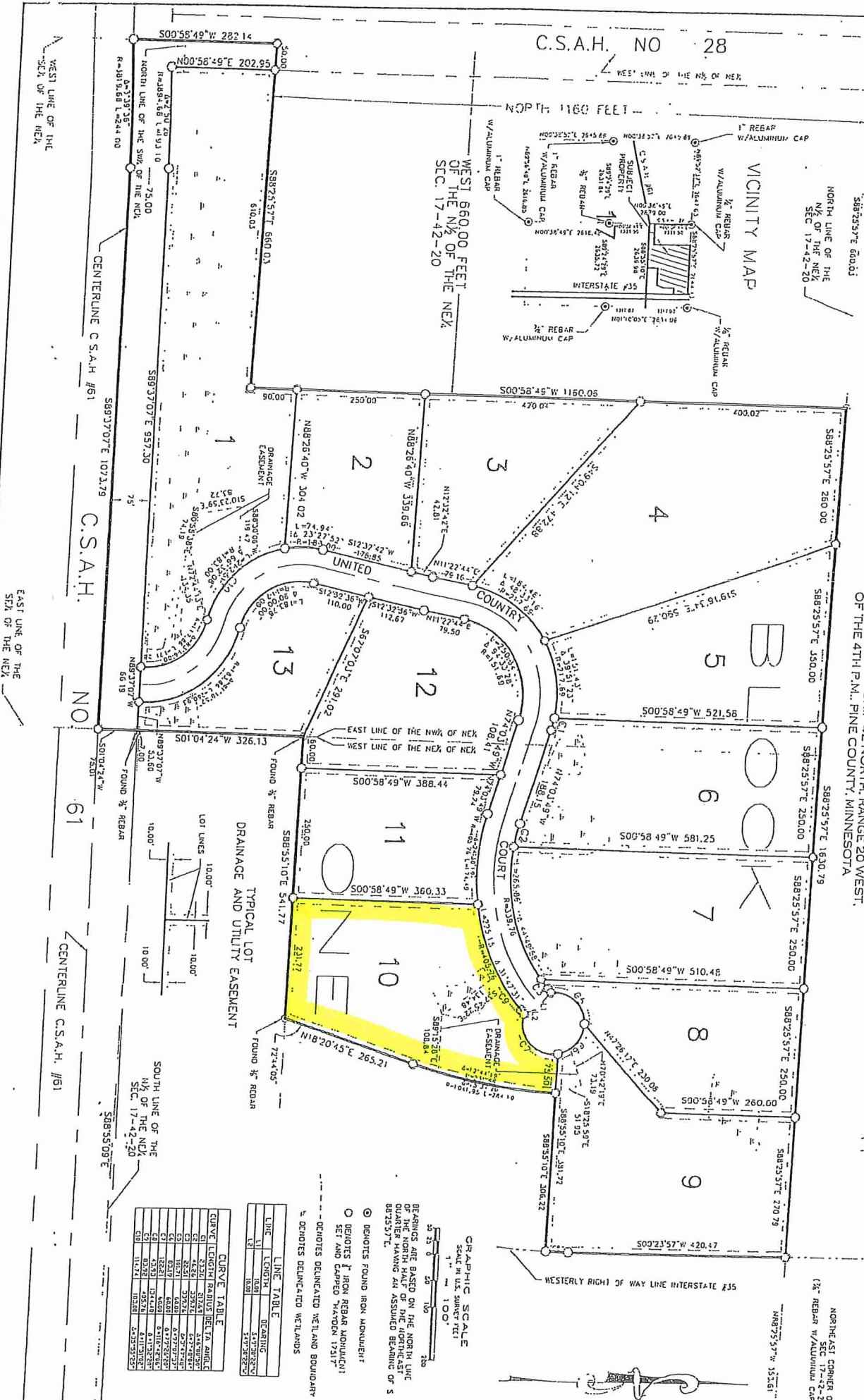
NORTH OAKS

LOCATED IN THE NORTHEAST QUARTER OF SECTION 17, TOWNSHIP 42 NORTH, RANGE 20 WEST, OF THE 4TH P.M., PINE COUNTY, MINNESOTA

C.S.A.H. NO 28



WEST 660.00 FEET OF THE NW 1/4 OF THE NE 1/4 SEC. 17-42-20



GRAPHIC SCALE

SCALE IN U.S. SURVEY FEET

1" = 100'

200'

300'

400'

500'

600'

700'

800'

900'

1000'

LINE TABLE

LINE	LENGTH	BEARING
L1	160.00	S89°37'07" E
L2	100.00	S89°37'07" E

CURVE TABLE

CURVE	LENGTH	RADIUS	DELTA ANGLE
C1	44.62	517.87	5° 07' 52"
C2	26.21	307.76	5° 07' 52"
C3	10.41	121.40	5° 07' 52"
C4	10.41	121.40	5° 07' 52"
C5	43.93	514.10	5° 07' 52"
C6	11.72	135.80	5° 07' 52"