

Need Additional Plat Books or Wall Maps?

Daviess County Soil and Water Conservation District
 209 Ash Street
 Gallatin, MO 64640
 660-663-3703 ext. 3



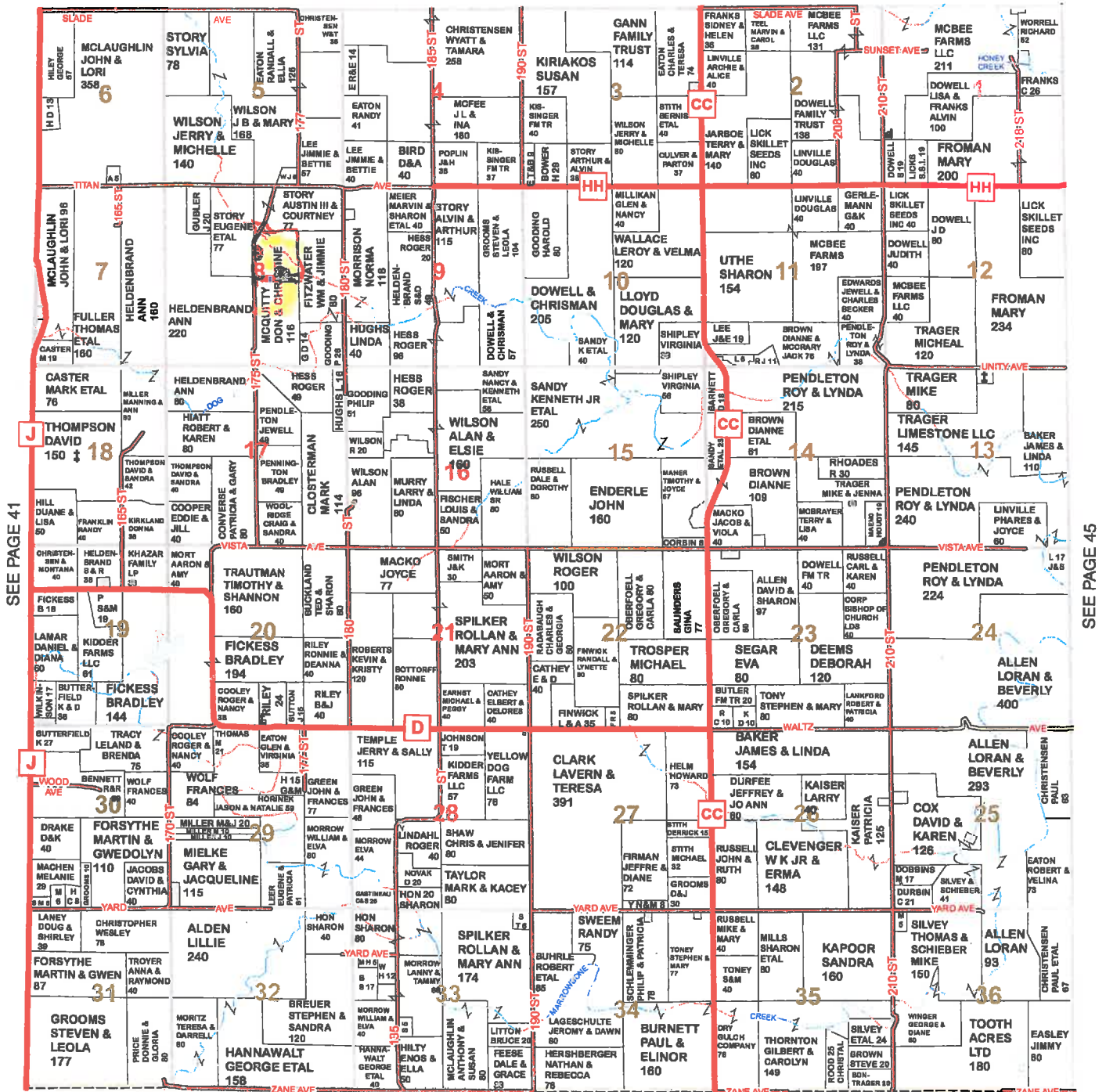
Sheridan

*4 Acres M/C 4
3500 Patten*

Township 58N - Range 28W

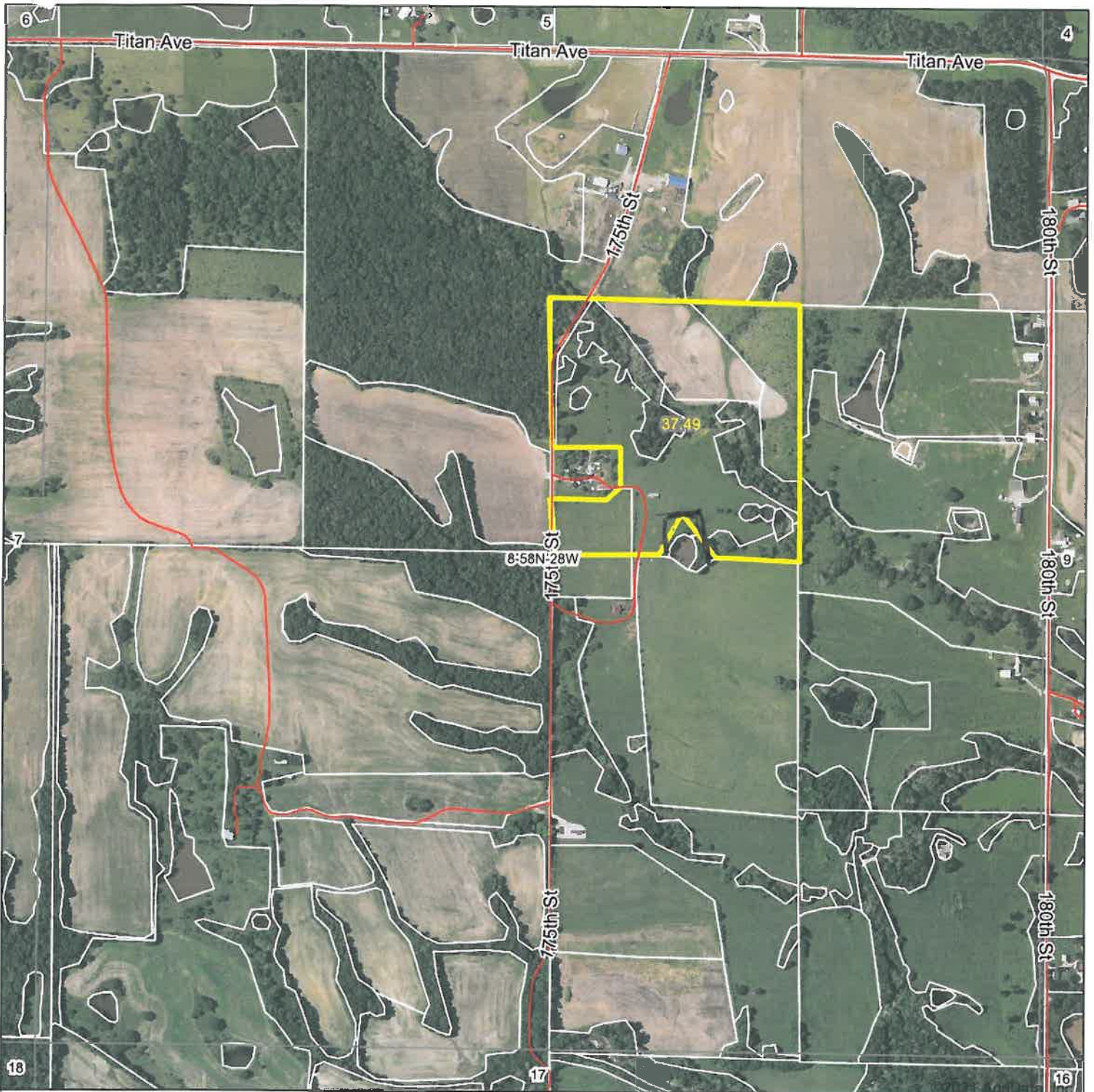
Copyright © 2014 Mapping Solutions

SEE PAGE 33



CALDWELL COUNTY

Aerial Map



Map Center: 39.851152, -94.070046



United Country
NELSON REAL ESTATE

8-58N-28W
Daviess County
Missouri

Maps Provided By:
 **surety**
CUSTOMIZED ONLINE MAPPING
© AgriData, Inc. 2021 www.AgriDataInc.com



1st Pole N Red BARN
3/30/2021

Field borders provided by Farm Service Agency as of 5/21/2008.