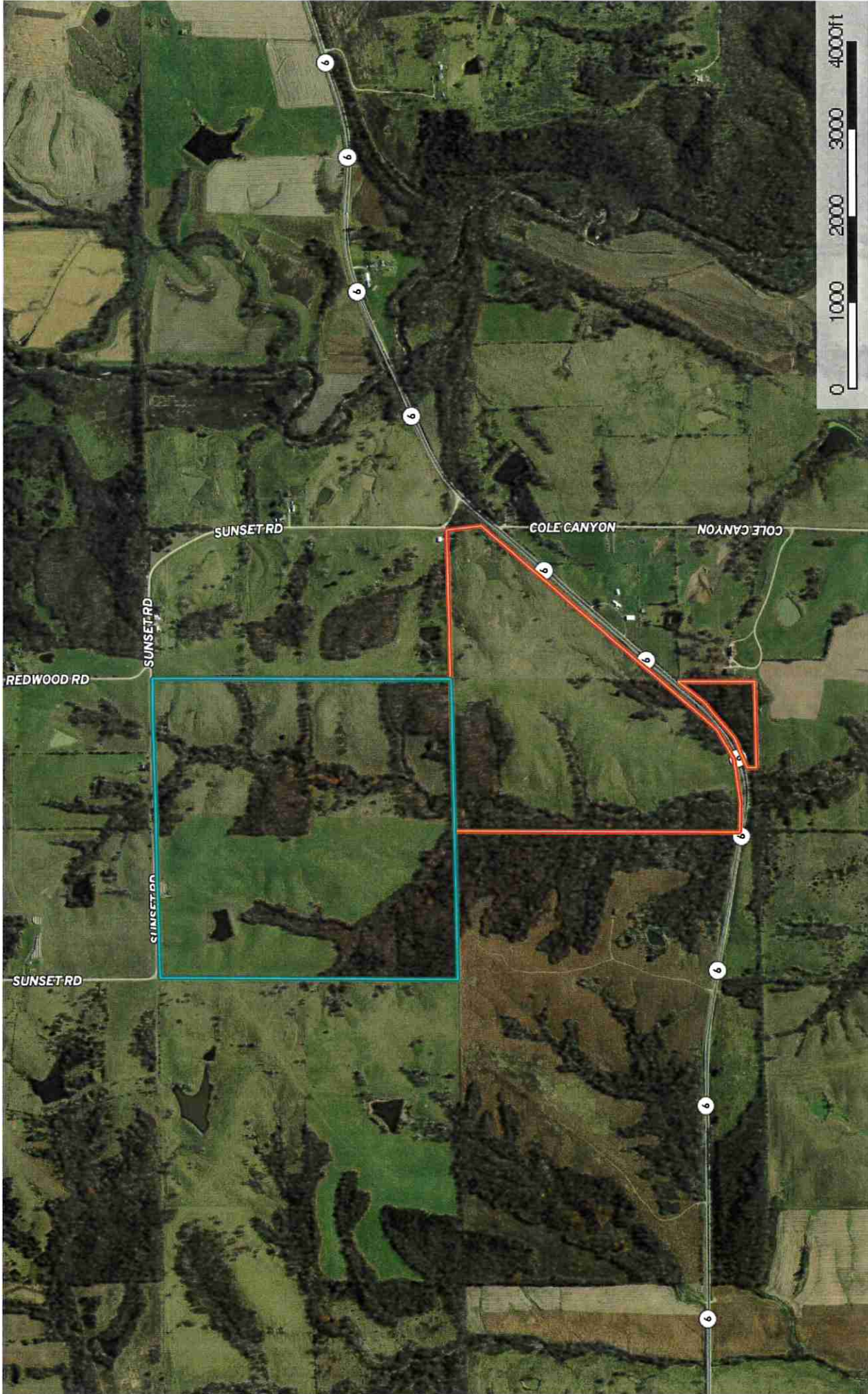


owen milan
Sullivan County, Missouri, AC +/-



Tract 2 -
160 +/-



Tract 2 -
110 +/-



Kurt Hollenberg
P: 800-895-4430

www.MissouriLandAndHome.com

3516 I-70 Dr SE, Columbia, MO, 65201



The information contained herein was obtained from sources known to be reliable. MapRight Services makes no warranties or guarantees as to the completeness or accuracy thereof.

▣ All Polygons 271.1 ac

SOIL CODE	SOIL DESCRIPTION	ACRES	%	CAP
30068	Gorin silt loam, 5 to 9 percent slopes, eroded	14.0	5.15	3e
30225	Winnegan clay loam, 9 to 14 percent slopes, severely eroded	22.2	8.2	6e
30232	Winnegan loam, 9 to 14 percent slopes, eroded	40.0	14.74	4e
30100	Keswick loam, 5 to 9 percent slopes, eroded	11.5	4.26	3e
30054	Gara clay loam, 9 to 14 percent slopes, eroded	18.7	6.88	4e
50010	Winnegan loam, 14 to 20 percent slopes, eroded	100.7	37.16	6e
30027	Armstrong clay loam, 5 to 9 percent slopes, moderately eroded	36.3	13.41	3e
60142	Keswick loam, 9 to 14 percent slopes, eroded	2.1	0.78	4e
30052	Gara clay loam, 14 to 18 percent slopes, moderately eroded	19.1	7.05	6e
36085	Landes loam, 1 to 3 percent slopes, frequently flooded	3.0	1.09	3w
30055	Gara clay loam, 9 to 14 percent slopes, severely eroded	3.5	1.29	4e
TOTALS		271.1	100%	4.81


▣ Tract 2 - 160 +/- 159.9 ac

SOIL CODE	SOIL DESCRIPTION	ACRES	%	CAP
30068	Gorin silt loam, 5 to 9 percent slopes, eroded	8.1	5.04	3e
30225	Winnegan clay loam, 9 to 14 percent slopes, severely eroded	22.2	13.9	6e
30232	Winnegan loam, 9 to 14 percent slopes, eroded	15.1	9.44	4e
30100	Keswick loam, 5 to 9 percent slopes, eroded	5.8	3.63	3e
30054	Gara clay loam, 9 to 14 percent slopes, eroded	11.3	7.04	4e
50010	Winnegan loam, 14 to 20 percent slopes, eroded	75.7	47.35	6e
30027	Armstrong clay loam, 5 to 9 percent slopes, moderately eroded	21.7	13.6	3e
TOTALS		159.9	100%	5.0

▣ Tract 2 - 110 +/- 105.7 ac

SOIL CODE	SOIL DESCRIPTION	ACRES	%	CAP
60142	Keswick loam, 9 to 14 percent slopes, eroded	2.1	2.01	4e
50010	Winnegan loam, 14 to 20 percent slopes, eroded	25.1	23.69	6e
30232	Winnegan loam, 9 to 14 percent slopes, eroded	24.9	23.54	4e
30068	Gorin silt loam, 5 to 9 percent slopes, eroded	5.9	5.59	3e
30052	Gara clay loam, 14 to 18 percent slopes, moderately eroded	17.6	16.68	6e
30027	Armstrong clay loam, 5 to 9 percent slopes, moderately eroded	14.4	13.58	3e
30054	Gara clay loam, 9 to 14 percent slopes, eroded	7.4	7.0	4e

36085	Landes loam, 1 to 3 percent slopes, frequently flooded	2.6	2.49	3w
30100	Keswick loam, 5 to 9 percent slopes, eroded	5.7	5.42	3e
TOTALS		105.7	100%	4.54

 Tract 2 - 110+/- 5.5 ac

SOIL CODE	SOIL DESCRIPTION	ACRES	%	CAP
30052	Gara clay loam, 14 to 18 percent slopes, moderately eroded	1.5	26.6	6e
30027	Armstrong clay loam, 5 to 9 percent slopes, moderately eroded	0.2	4.39	3e
30055	Gara clay loam, 9 to 14 percent slopes, severely eroded	3.5	63.25	4e
36085	Landes loam, 1 to 3 percent slopes, frequently flooded	0.3	5.75	3w
TOTALS		5.5	100%	4.43

Capability Legend

Increased Limitations and Hazards

Decreased Adaptability and Freedom of Choice Users

Land, Capability

	1	2	3	4	5	6	7	8
'Wild Life'	•	•	•	•	•	•	•	•
Forestry	•	•	•	•	•	•	•	
Limited	•	•	•	•	•	•	•	
Moderate	•	•	•	•	•	•		
Intense	•	•	•	•	•			
Limited	•	•	•	•				
Moderate	•	•	•					
Intense	•	•						
Very Intense	•							

Grazing Cultivation

(c) climatic limitations (e) susceptibility to erosion

(s) soil limitations within the rooting zone (w) excess of water