

(2)

(1)
29,018 AC.

48" White Oak @
Fence Intersection

525.94'

Metal Fence Post
Set in South Bank
of Creek

1726.93'

2079.66'

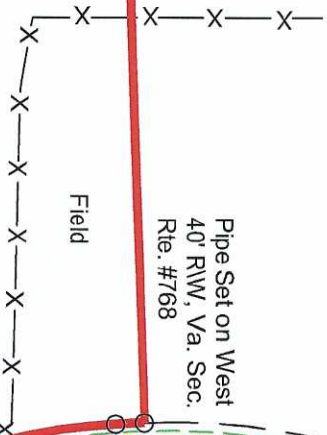
North Fork Greasy Creek

Branch

Branch

Branch

Branch



Pipe Set on West
40' R/W, Va. Sec.
Rte. #768

Pipe Found on West
40' R/W, Va. Sec. Rte. #768

856' of Road Frontage

