



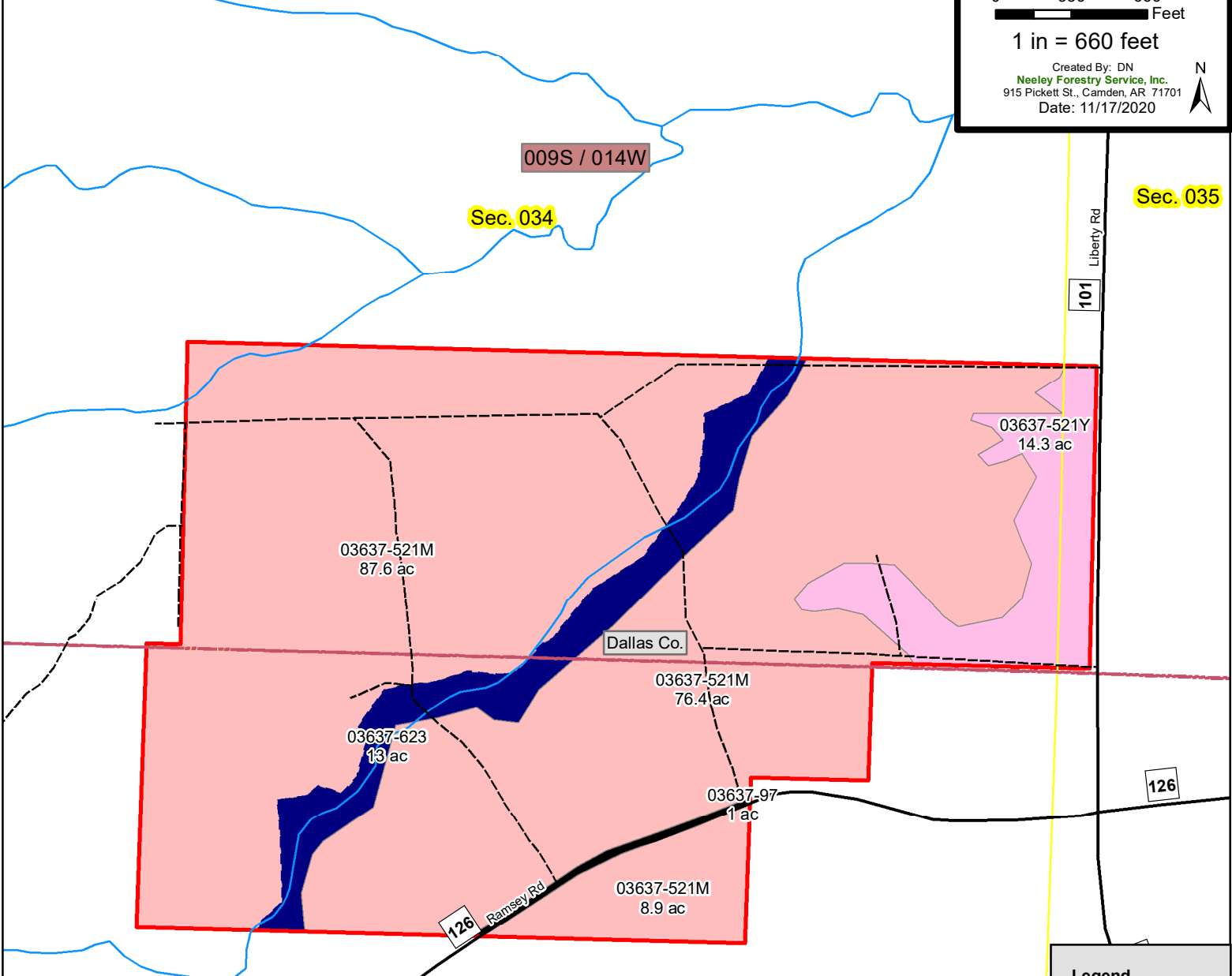
TType Map
#03637 Dallas 200
 +/- 201.31 acres (Deed)
 Sec. 34-09S/14W ; 03-10S/14W
 Dallas Co., AR

— = property boundary

0 330 660 Feet

1 in = 660 feet

Created By: DN
 Neeley Forestry Service, Inc.
 915 Pickett St., Camden, AR 71701
 Date: 11/17/2020



Legend

- +— Railway
- - - Woods/Roads
- AR_Transportation
- Streets/Roads
- RTTYP
- County Road
- ▬ State Hwy
- US Hwy
- Interstate
- ▣ County
- ▤ Township/Range
- ▥ Section
- ▦ Ponds/Lakes
- ▧ Stream/River
- ▨ City Limits
- ▩ Public Land
- Tract
- Type
- Gate

▨ Other Trussell-Terrebonne Stands

StandID

- ▥ 13-14yr Mostly Pine Regen, Flats (+/- 172.9 ac)
- ▦ 5-6yr Mostly Pine Regen, Flats (+/- 14.3 ac)
- ▧ Mostly Hardwood, SMZ Drain (+/- 13.0 ac)
- ▩ Public Road (+/- 1.0 ac)

Although created with data believed to be correct, neither the accuracy nor completeness of this map are guaranteed in any manner by the seller, the seller's agents, or managers. This map is provided herein merely as an aid to prospective buyers. Prospective buyers should verify information for themselves.