

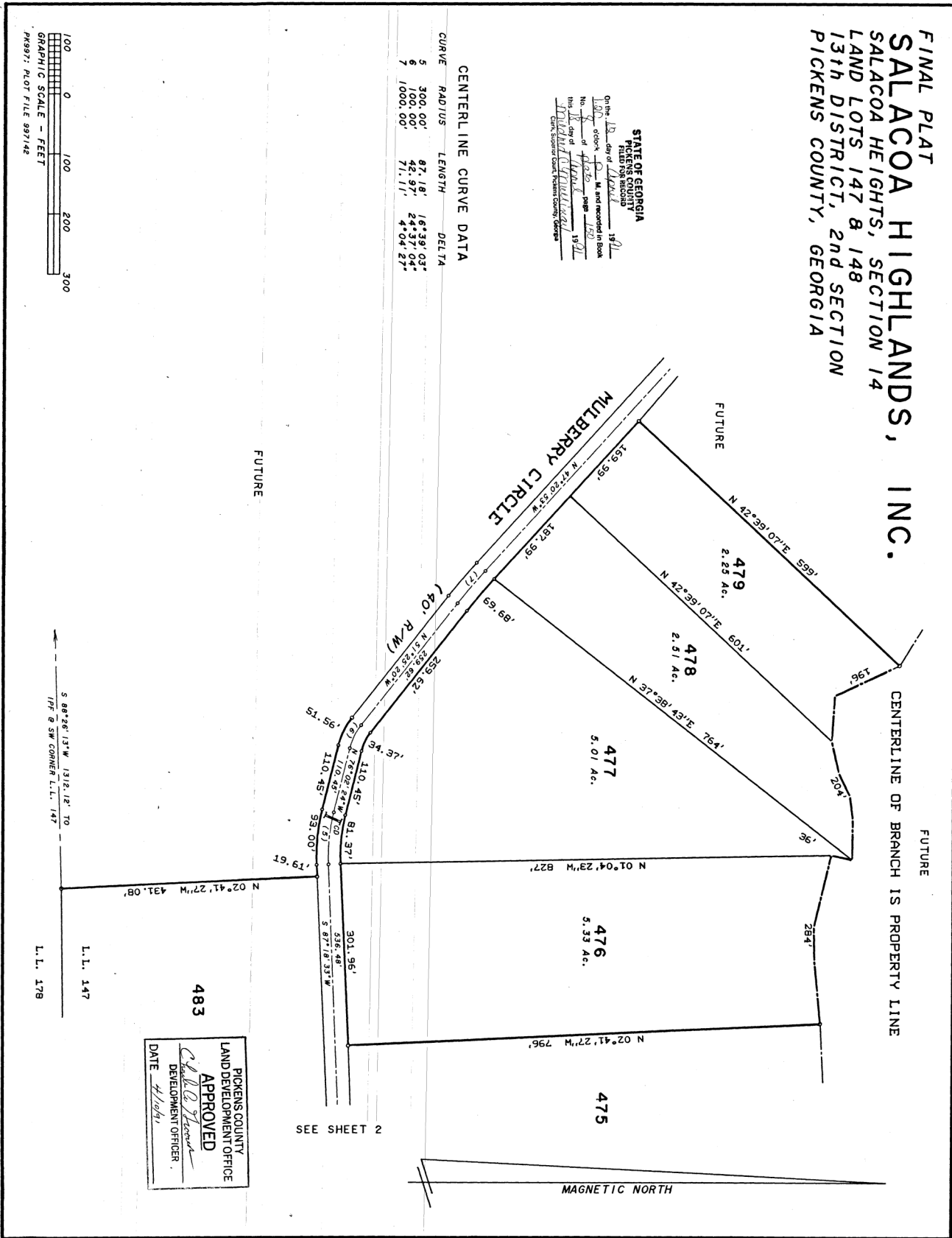
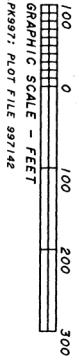
Exhibit B

130

FINAL PLAT  
SALACOA HIGHLANDS, INC.  
SALACOA HEIGHTS, SECTION 14  
LAND LOTS 147 & 148  
13th DISTRICT, 2nd SECTION  
PICKENS COUNTY, GEORGIA

STATE OF GEORGIA  
FILED FOR RECORD  
On the 13th day of March 1991  
at the County of Pickens, Georgia  
No. 18 of 1991  
1991  
Mickel C. Spivey  
Clerk, Superior Court, Pickens County, Georgia

| CURVE | RADIUS   | LENGTH | DELTA     |
|-------|----------|--------|-----------|
| 5     | 300.00'  | 87.18' | 16°39'03" |
| 6     | 100.00'  | 42.97' | 24°37'04" |
| 7     | 1000.00' | 71.11' | 4°04'27"  |



FUTURE

FUTURE  
CENTERLINE OF BRANCH 13 PROPERTY LINE

MULBERRY CIRCLE  
40' R/W

PICKENS COUNTY  
LAND DEVELOPMENT OFFICE  
APPROVED  
*Chad C. Thomas*  
DEVELOPMENT OFFICER  
DATE 4/10/91

483

SEE SHEET 2

L.L. 147  
L.L. 178

S 88°26'13"W 1312.12' TO  
177° 8' SW CORNER L.L. 147

SHEET 3 OF 3 SHEETS