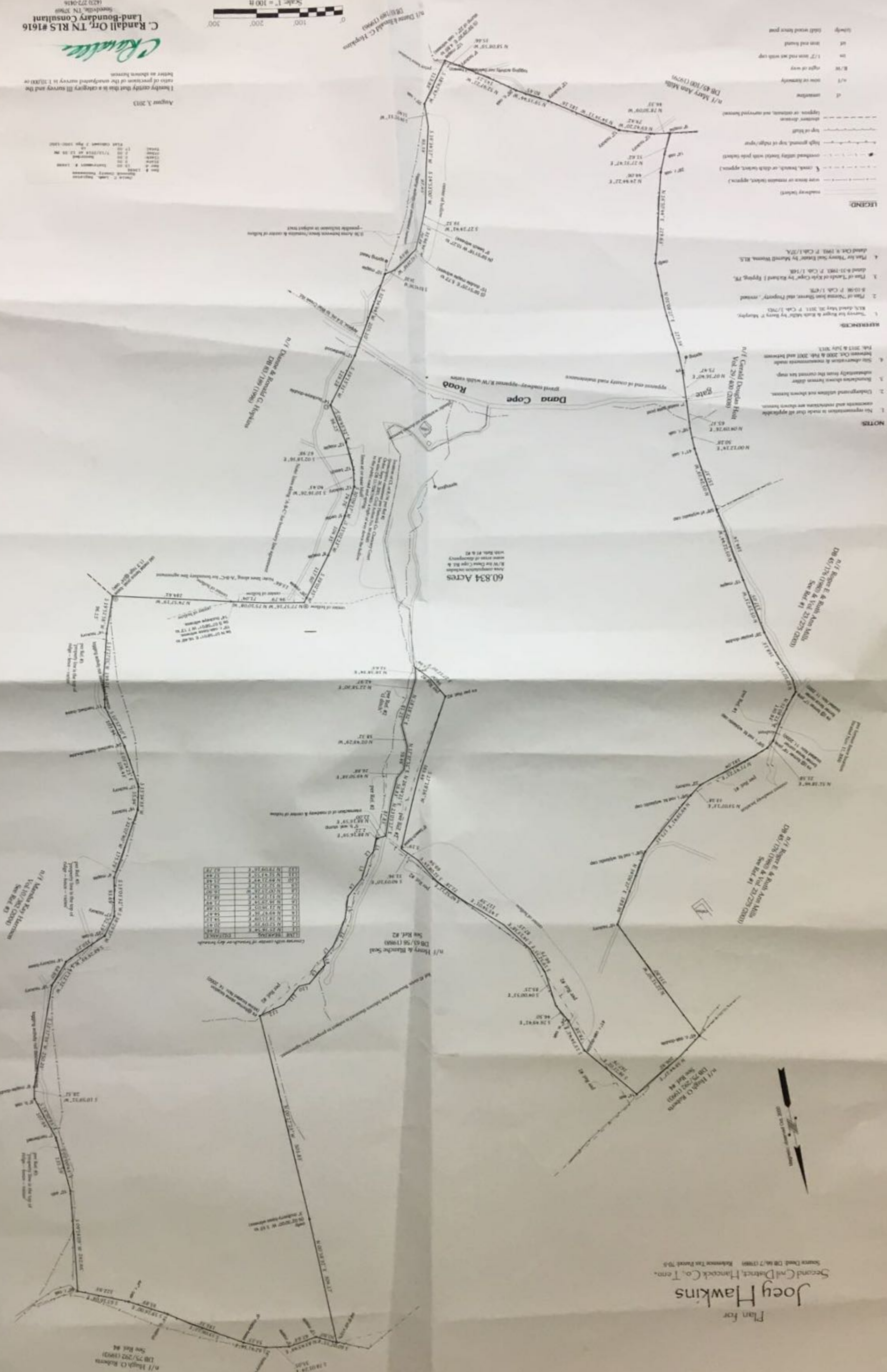


Plan for
Joey Hawkins
 Second Civil District, Hancock Co., Tenn.
 Source: Deed DB 66/7 (1988) Reference Tax Parcel 704



- NOTES**
- No representation is made that all applicable easements and restrictions are shown herein.
 - Underground utilities are shown herein.
 - Boundaries shown differ substantially from the current tax map.
 - Site observation & measurements made between Oct. 2008 & Feb. 2009 and between Feb. 2013 & May 2013.
- REFERENCES**
- Survey for Roger & Ruth Ann Mills by Henry T. Murphy, R.L.S. dated May 20, 2011. P. CA 1/290.
 - Plan of "Newman Farm, Tract and Property", revised 4-10-08. P. CA 1/478.
 - Plan of "Tracts of Kyle Cape" by Richard F. Epping, R.L.S. dated 4-21-1983. P. CA 1/148.
 - Plan for "Henry and Ruth" by Edward Thomas, R.L.S. dated Oct. 3, 1981. P. CA 1/274.
- LEGEND**
- roadways (width)
 - new lines or remain (width, approx.)
 - corner, bench, or ditch (width, approx.)
 - overhead utility (width) with pole (width)
 - high ground, top of ridge/slope
 - top of bank
 - apparent distance
 - location
 - line of boundary
 - edge of way
 - 1/2" iron rod not with cap
 - iron rod found
 - (old) wood fence post

Corner with center of boundary by traverse

Station	Angle	Distance	Bearing
1	112.21	112.21	N 112.21° E
2	112.21	112.21	N 112.21° E
3	112.21	112.21	N 112.21° E
4	112.21	112.21	N 112.21° E
5	112.21	112.21	N 112.21° E
6	112.21	112.21	N 112.21° E
7	112.21	112.21	N 112.21° E
8	112.21	112.21	N 112.21° E
9	112.21	112.21	N 112.21° E
10	112.21	112.21	N 112.21° E
11	112.21	112.21	N 112.21° E
12	112.21	112.21	N 112.21° E
13	112.21	112.21	N 112.21° E
14	112.21	112.21	N 112.21° E
15	112.21	112.21	N 112.21° E
16	112.21	112.21	N 112.21° E
17	112.21	112.21	N 112.21° E
18	112.21	112.21	N 112.21° E
19	112.21	112.21	N 112.21° E
20	112.21	112.21	N 112.21° E
21	112.21	112.21	N 112.21° E
22	112.21	112.21	N 112.21° E
23	112.21	112.21	N 112.21° E
24	112.21	112.21	N 112.21° E
25	112.21	112.21	N 112.21° E
26	112.21	112.21	N 112.21° E
27	112.21	112.21	N 112.21° E
28	112.21	112.21	N 112.21° E
29	112.21	112.21	N 112.21° E
30	112.21	112.21	N 112.21° E
31	112.21	112.21	N 112.21° E
32	112.21	112.21	N 112.21° E
33	112.21	112.21	N 112.21° E
34	112.21	112.21	N 112.21° E
35	112.21	112.21	N 112.21° E
36	112.21	112.21	N 112.21° E
37	112.21	112.21	N 112.21° E
38	112.21	112.21	N 112.21° E
39	112.21	112.21	N 112.21° E
40	112.21	112.21	N 112.21° E
41	112.21	112.21	N 112.21° E
42	112.21	112.21	N 112.21° E
43	112.21	112.21	N 112.21° E
44	112.21	112.21	N 112.21° E
45	112.21	112.21	N 112.21° E
46	112.21	112.21	N 112.21° E
47	112.21	112.21	N 112.21° E
48	112.21	112.21	N 112.21° E
49	112.21	112.21	N 112.21° E
50	112.21	112.21	N 112.21° E
51	112.21	112.21	N 112.21° E
52	112.21	112.21	N 112.21° E
53	112.21	112.21	N 112.21° E
54	112.21	112.21	N 112.21° E
55	112.21	112.21	N 112.21° E
56	112.21	112.21	N 112.21° E
57	112.21	112.21	N 112.21° E
58	112.21	112.21	N 112.21° E
59	112.21	112.21	N 112.21° E
60	112.21	112.21	N 112.21° E
61	112.21	112.21	N 112.21° E
62	112.21	112.21	N 112.21° E
63	112.21	112.21	N 112.21° E
64	112.21	112.21	N 112.21° E
65	112.21	112.21	N 112.21° E
66	112.21	112.21	N 112.21° E
67	112.21	112.21	N 112.21° E
68	112.21	112.21	N 112.21° E
69	112.21	112.21	N 112.21° E
70	112.21	112.21	N 112.21° E
71	112.21	112.21	N 112.21° E
72	112.21	112.21	N 112.21° E
73	112.21	112.21	N 112.21° E
74	112.21	112.21	N 112.21° E
75	112.21	112.21	N 112.21° E
76	112.21	112.21	N 112.21° E
77	112.21	112.21	N 112.21° E
78	112.21	112.21	N 112.21° E
79	112.21	112.21	N 112.21° E
80	112.21	112.21	N 112.21° E
81	112.21	112.21	N 112.21° E
82	112.21	112.21	N 112.21° E
83	112.21	112.21	N 112.21° E
84	112.21	112.21	N 112.21° E
85	112.21	112.21	N 112.21° E
86	112.21	112.21	N 112.21° E
87	112.21	112.21	N 112.21° E
88	112.21	112.21	N 112.21° E
89	112.21	112.21	N 112.21° E
90	112.21	112.21	N 112.21° E
91	112.21	112.21	N 112.21° E
92	112.21	112.21	N 112.21° E
93	112.21	112.21	N 112.21° E
94	112.21	112.21	N 112.21° E
95	112.21	112.21	N 112.21° E
96	112.21	112.21	N 112.21° E
97	112.21	112.21	N 112.21° E
98	112.21	112.21	N 112.21° E
99	112.21	112.21	N 112.21° E
100	112.21	112.21	N 112.21° E

C. Randall Orr, TN RLS #1616
 Land-Boundary Consultant
 Knoxville, TN 37969
 (423) 272-0416

C. Randall Orr

I hereby certify that this is a category III survey and the ratio of precision of the measured survey is 1:10,000 or better as shown herein.

August 3, 2013

Station	Angle	Distance	Bearing
1	112.21	112.21	N 112.21° E
2	112.21	112.21	N 112.21° E
3	112.21	112.21	N 112.21° E
4	112.21	112.21	N 112.21° E
5	112.21	112.21	N 112.21° E
6	112.21	112.21	N 112.21° E
7	112.21	112.21	N 112.21° E
8	112.21	112.21	N 112.21° E
9	112.21	112.21	N 112.21° E
10	112.21	112.21	N 112.21° E
11	112.21	112.21	N 112.21° E
12	112.21	112.21	N 112.21° E
13	112.21	112.21	N 112.21° E
14	112.21	112.21	N 112.21° E
15	112.21	112.21	N 112.21° E
16	112.21	112.21	N 112.21° E
17	112.21	112.21	N 112.21° E
18	112.21	112.21	N 112.21° E
19	112.21	112.21	N 112.21° E
20	112.21	112.21	N 112.21° E
21	112.21	112.21	N 112.21° E
22	112.21	112.21	N 112.21° E
23	112.21	112.21	N 112.21° E
24	112.21	112.21	N 112.21° E
25	112.21	112.21	N 112.21° E
26	112.21	112.21	N 112.21° E
27	112.21	112.21	N 112.21° E
28	112.21	112.21	N 112.21° E
29	112.21	112.21	N 112.21° E
30	112.21	112.21	N 112.21° E
31	112.21	112.21	N 112.21° E
32	112.21	112.21	N 112.21° E
33	112.21	112.21	N 112.21° E
34	112.21	112.21	N 112.21° E
35	112.21	112.21	N 112.21° E
36	112.21	112.21	N 112.21° E
37	112.21	112.21	N 112.21° E
38	112.21	112.21	N 112.21° E
39	112.21	112.21	N 112.21° E
40	112.21	112.21	N 112.21° E
41	112.21	112.21	N 112.21° E
42	112.21	112.21	N 112.21° E
43	112.21	112.21	N 112.21° E
44	112.21	112.21	N 112.21° E
45	112.21	112.21	N 112.21° E
46	112.21	112.21	N 112.21° E
47	112.21	112.21	N 112.21° E
48	112.21	112.21	N 112.21° E
49	112.21	112.21	N 112.21° E
50	112.21	112.21	N 112.21° E
51	112.21	112.21	N 112.21° E
52	112.21	112.21	N 112.21° E
53	112.21	112.21	N 112.21° E
54	112.21	112.21	N 112.21° E
55	112.21	112.21	N 112.21° E
56	112.21	112.21	N 112.21° E
57	112.21	112.21	N 112.21° E
58	112.21	112.21	N 112.21° E
59	112.21	112.21	N 112.21° E
60	112.21	112.21	N 112.21° E
61	112.21	112.21	N 112.21° E
62	112.21	112.21	N 112.21° E
63	112.21	112.21	N 112.21° E
64	112.21	112.21	N 112.21° E
65	112.21	112.21	N 112.21° E
66	112.21	112.21	N 112.21° E
67	112.21	112.21	N 112.21° E
68	112.21	112.21	N 112.21° E
69	112.21	112.21	N 112.21° E
70	112.21	112.21	N 112.21° E
71	112.21	112.21	N 112.21° E
72	112.21	112.21	N 112.21° E
73	112.21	112.21	N 112.21° E
74	112.21	112.21	N 112.21° E
75	112.21	112.21	N 112.21° E
76	112.21	112.21	N 112.21° E
77	112.21	112.21	N 112.21° E
78	112.21	112.21	N 112.21° E
79	112.21	112.21	N 112.21° E
80	112.21	112.21	N 112.21° E
81	112.21	112.21	N 112.21° E
82	112.21	112.21	N 112.21° E
83	112.21	112.21	N 112.21° E
84	112.21	112.21	N 112.21° E
85	112.21	112.21	N 112.21° E
86	112.21	112.21	N 112.21° E
87	112.21	112.21	N 112.21° E
88	112.21	112.21	N 112.21° E
89	112.21	112.21	N 112.21° E
90	112.21	112.21	N 112.21° E
91	112.21	112.21	N 112.21° E
92	112.21	112.21	N 112.21° E
93	112.21	112.21	N 112.21° E
94	112.21	112.21	N 112.21° E
95	112.21	112.21	N 112.21° E
96	112.21	112.21	N 112.21° E
97	112.21	112.21	N 112.21° E
98	112.21	112.21	N 112.21° E
99	112.21	112.21	N 112.21° E
100	112.21	112.21	N 112.21° E

