

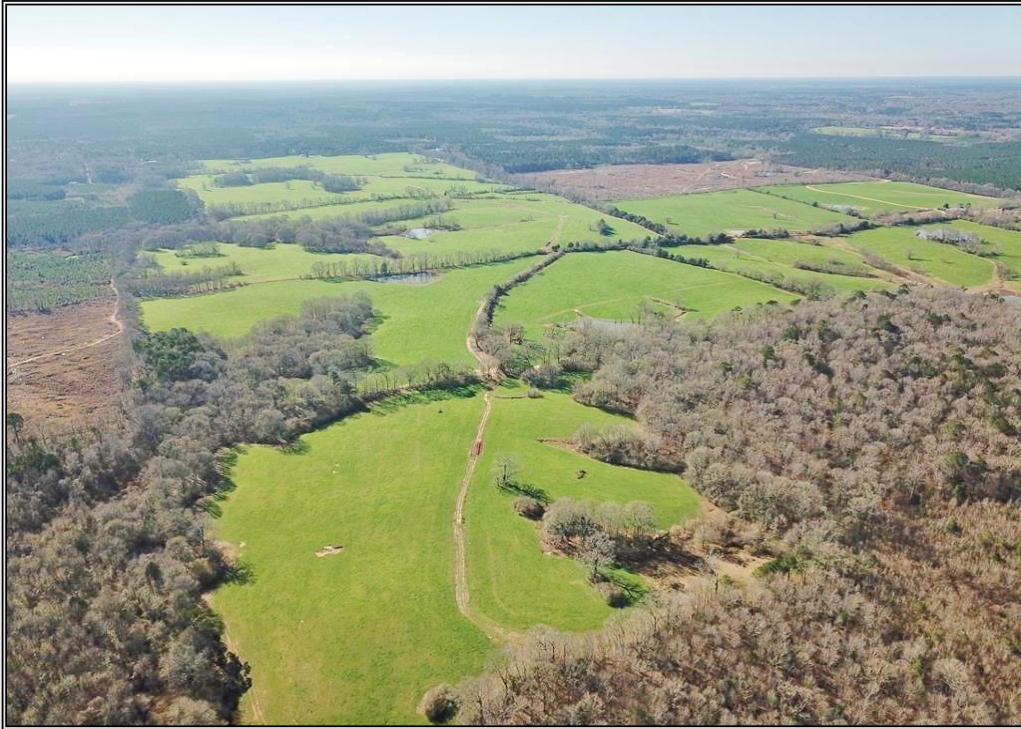


Slade Priest

sladepriest1@gmail.com
Office: (601) 250-0017
Cell: (601) 888-0094
SouthernStatesRealty.com



SOUTHERN STATES REALTY



Pastureland tract for sale in Centreville, MS. Large pasture tracts like this rarely come on the market. The pastures are fenced and cross fenced with 7 ponds for fishing and watering the livestock. The tract is 95% pastureland and is currently being used for a large cattle operation and has been for over 20 years. The towering mature hardwoods and rolling terrain make this place so much more than just pastureland and its one of the best looking tracts in the county. The surrounding woods hold lots of deer and turkeys that come on this tract to feed and water. There are mostly large surrounding landowners that are great neighbors. There are also several great building sites overlooking the beautiful open fields. The asphalt road frontage on Pepper House Road make this tract easy to get to and it has a great internal road system. This is a great location with easy access only 1 hour from Baton Rouge and 2 hours from New Orleans. Call today to set up your private showing!

3001 Pepper House Road, Centreville

31.111296, -91.023461 GPS



\$1,172,500

335 Acres
MLS #131659
UC #23042-31659

