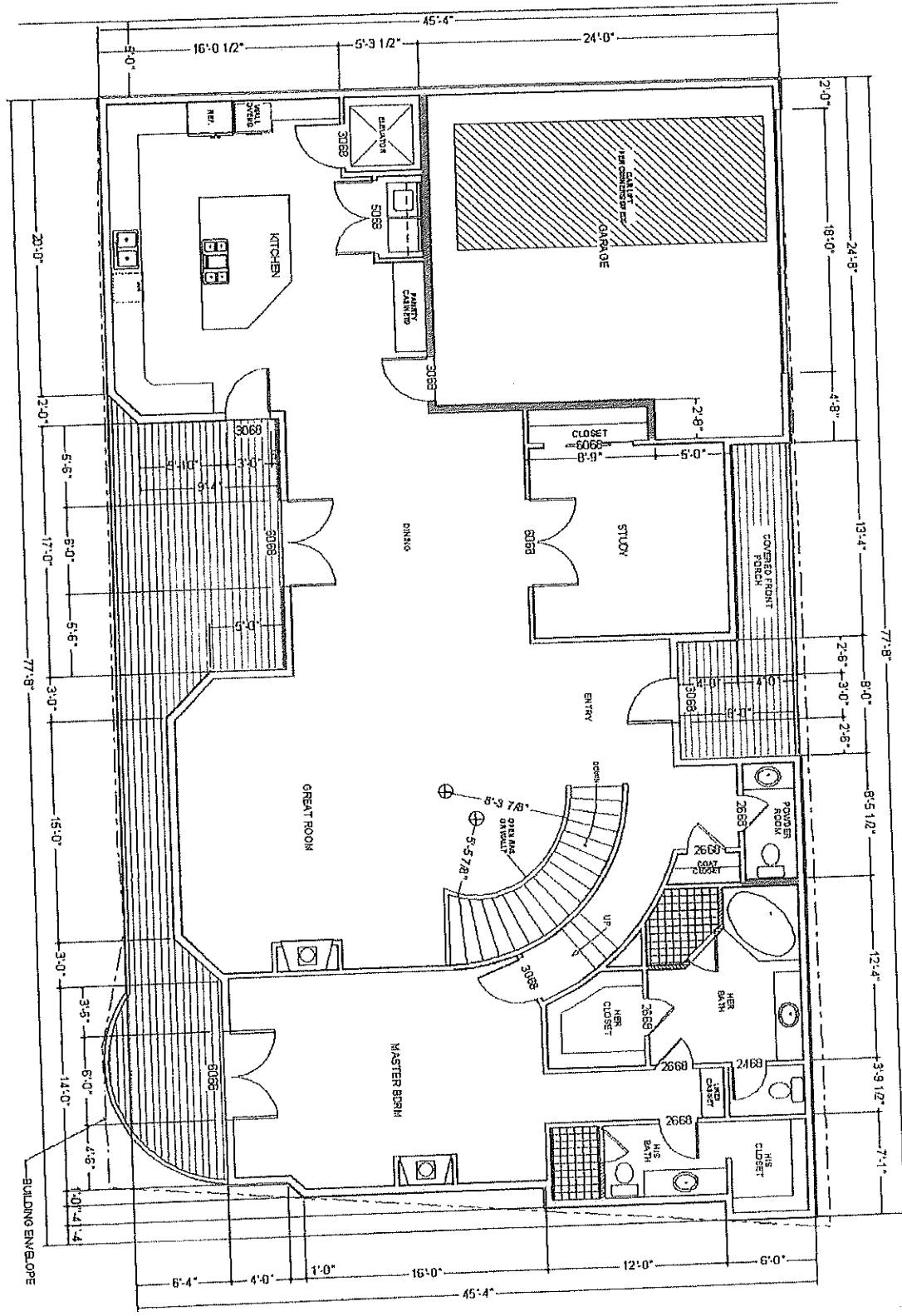
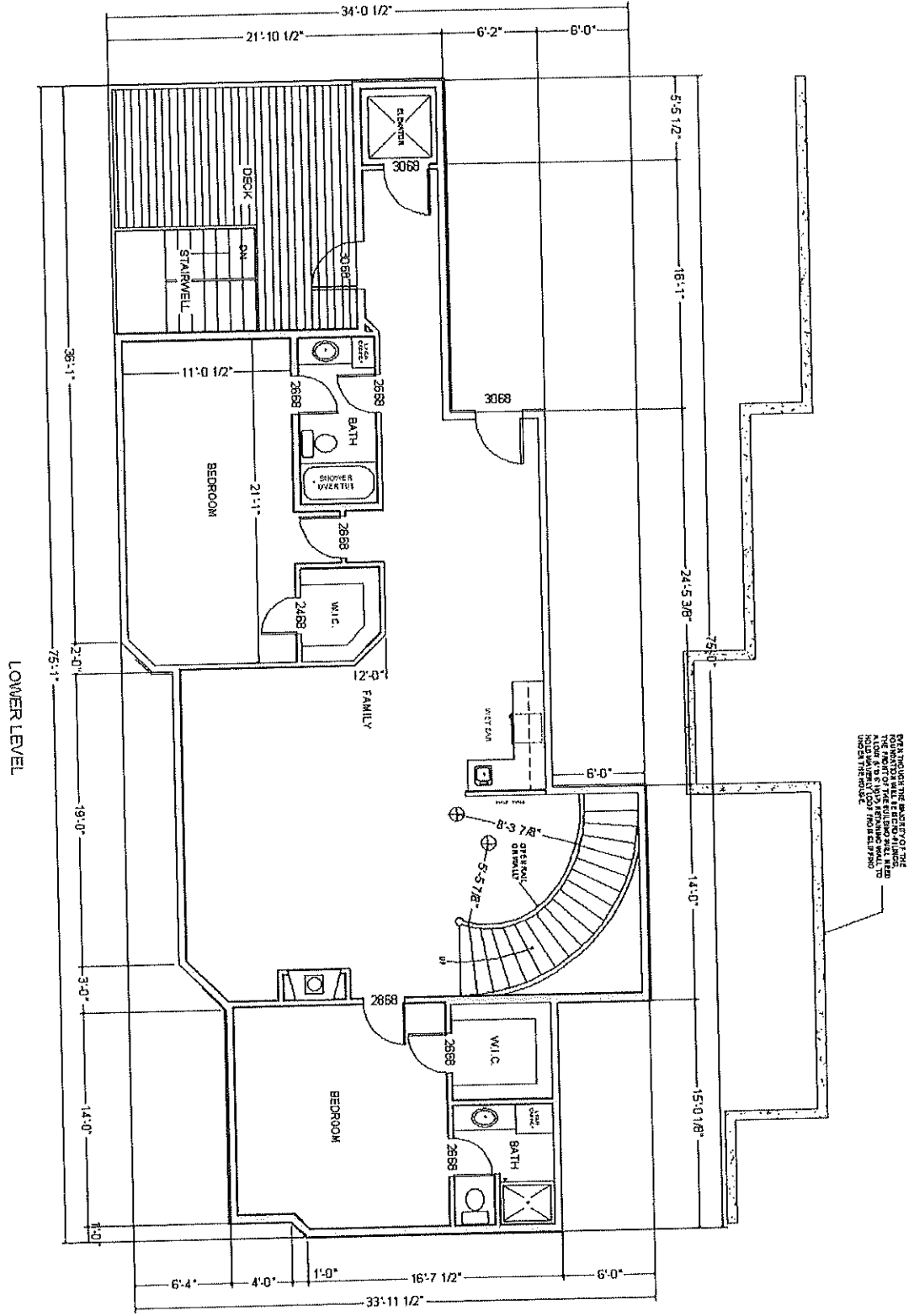


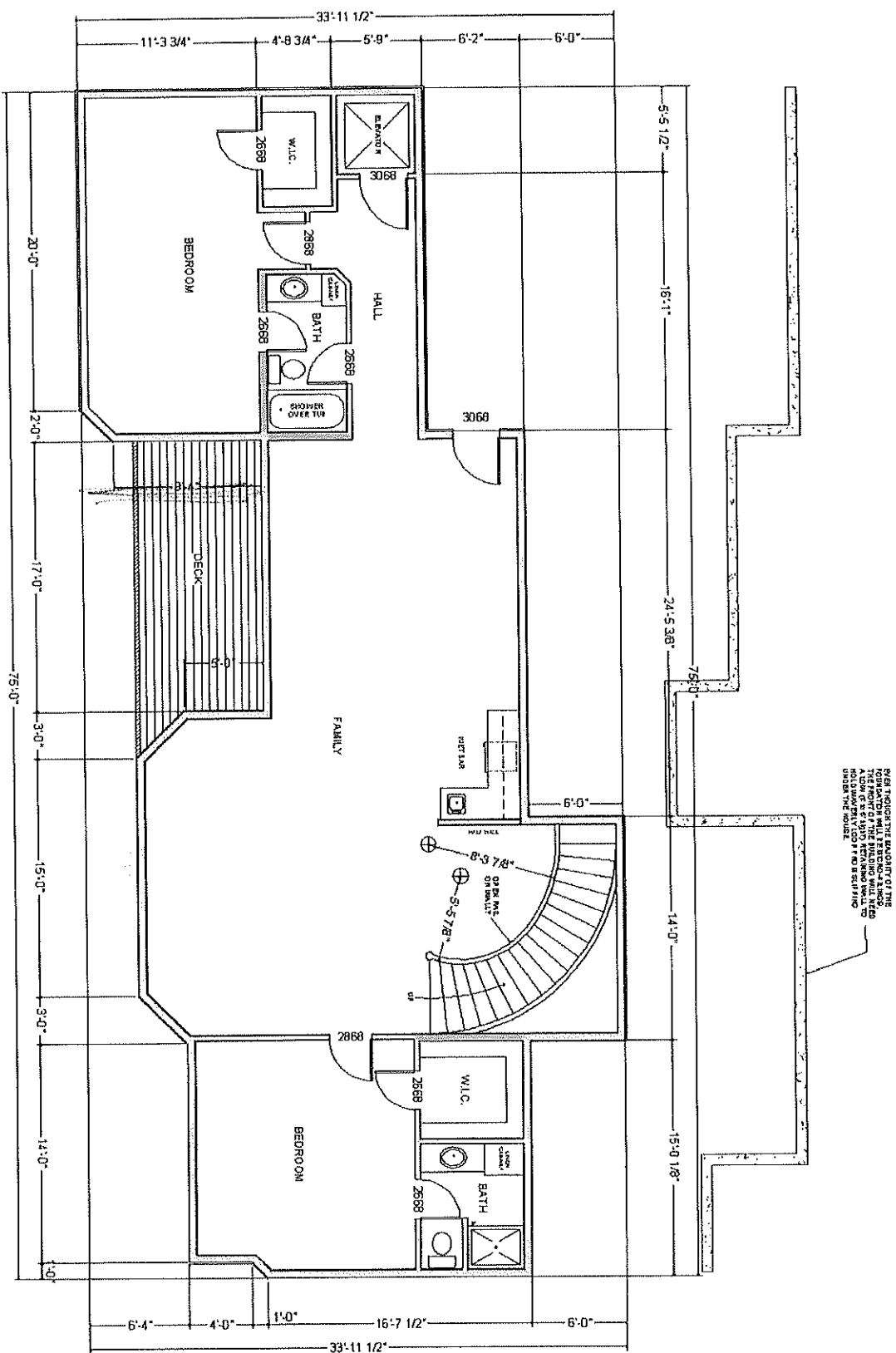
MAIN LEVEL - ATT





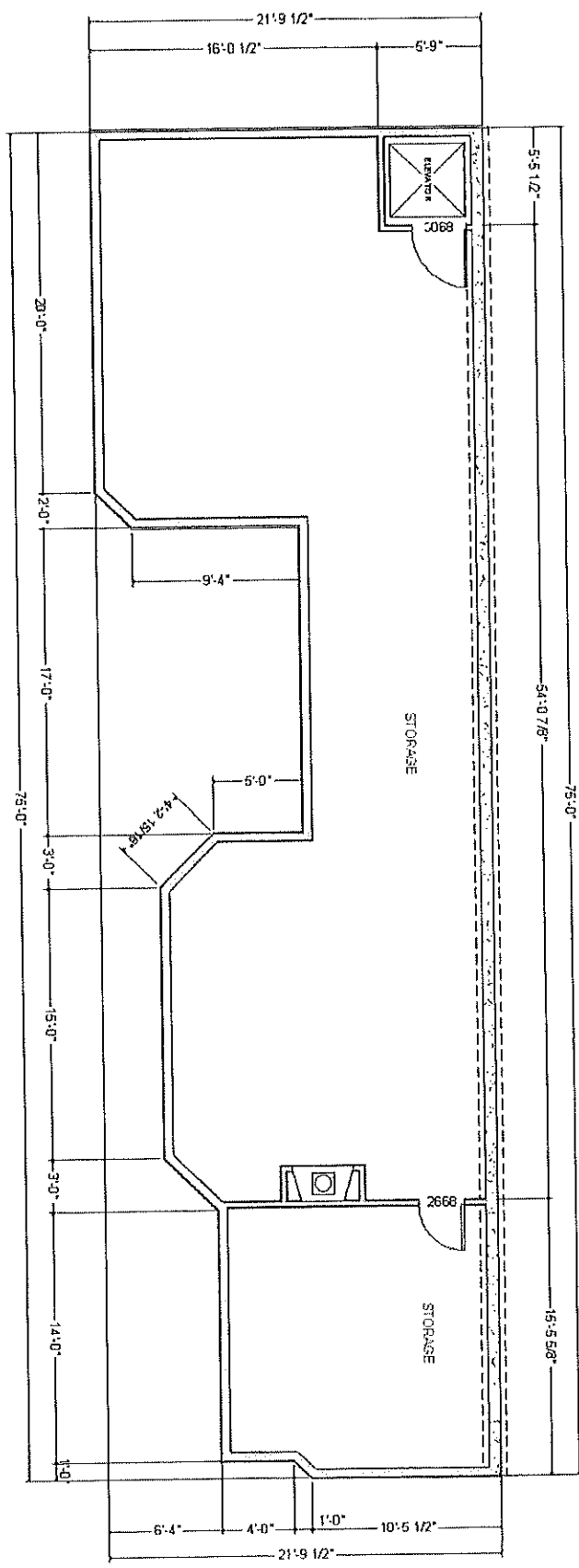
3

LOWER LEVEL ALT



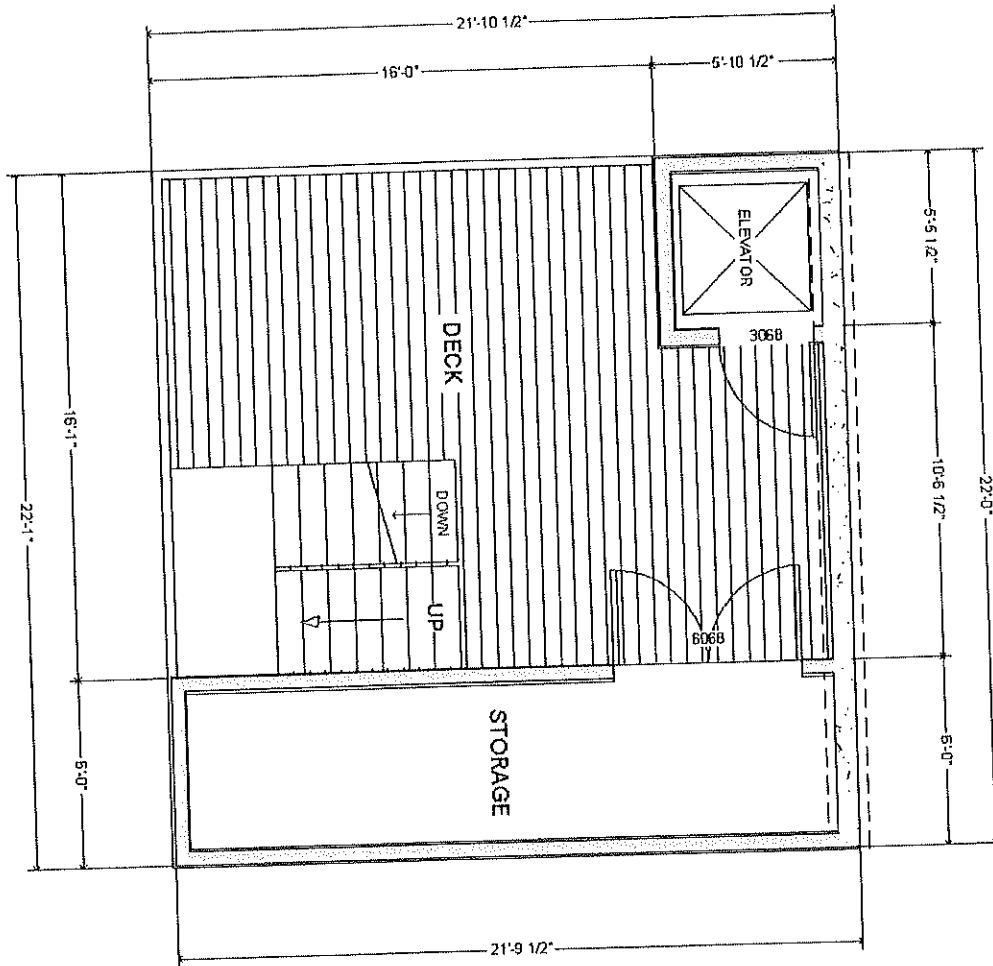
4

LOWER LEVEL
3RD LEVEL - STORAGE



5

3rd level -
STORAGE LEVEL



6



From: William R. Brown Jr. \(\adelphia\)
To: William Spring
Date: 3/22/2006 10:45:22 AM
Subject: lower level, east elevation, area calculations

Bill & Carole,

Here are the areas:

	SQ. FT.
LOWER FLOOR	
LIVING	0
STORAGE	1261
MID LEVEL	
LIVING	1674
DECK	142
MAIN (UPPER) FLOOR	
LIVING	2410
GARAGE	543
REAR DECK	370
FRONT PORCH	116
TOTAL LIVING	4084
TOTAL OTHER AREAS	2432
TOTAL ALL AREAS	6516

Attached files are the East elevation/section and the lower level plan adjusted per our discussion. We'll get with Rob Tate and have a conference call the first half of next week. I'll see if I can get Mark Michalak from Mountain Lakes Construction to participate as well.

Thanks,

Bill

~~~~~  
 William R. Brown Jr.  
*Professional Building Designer*  
*American Institute of Building Design* ®  
 President -- Home Plan Central, Inc.  
 5300 E. Marina Ct.  
 Post Falls, Idaho 83854  
 Phone/Fax: 208-777-9989  
 Cell: 208-651-1272

file:///C:/Documents%20and%20Settings/Owner/Local%20Settings/Temp\F8CBE9DA-6C55-4568-BB8C-4B... 3/22/2006