



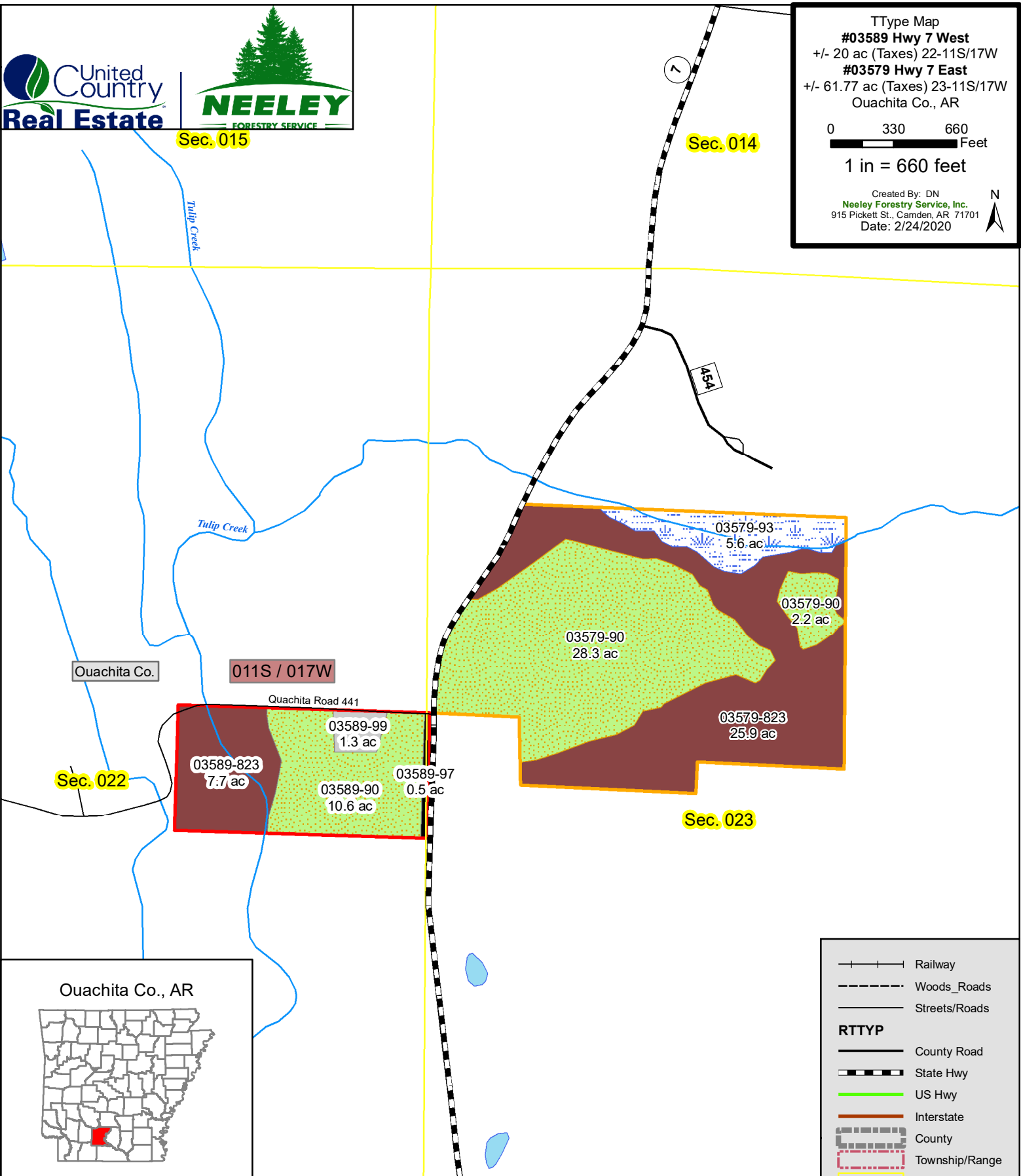
Sec. 015

Sec. 014

TType Map
#03589 Hwy 7 West
 +/- 20 ac (Taxes) 22-11S/17W
#03579 Hwy 7 East
 +/- 61.77 ac (Taxes) 23-11S/17W
 Ouachita Co., AR

0 330 660 Feet
 1 in = 660 feet

Created By: DN
 Neeley Forestry Service, Inc.
 915 Pickett St., Camden, AR 71701
 Date: 2/24/2020



Ouachita Co.

011S / 017W

Quachita Road 441

Sec. 022

Sec. 023

03589-823
7.7 ac

03589-99
1.3 ac

03589-90
10.6 ac

03589-97
0.5 ac

03579-90
28.3 ac

03579-823
25.9 ac

03579-93
5.6 ac

03579-90
2.2 ac

Ouachita Co., AR



1 in = 200 miles

Although created with data believed to be correct, neither the accuracy nor completeness of this map are guaranteed in any manner by the seller, the seller's agents, or managers. This map is provided herein merely as an aid to prospective buyers. Prospective buyers should verify information for themselves.

#03589 Hwy 7 West

- Hardwood, Bottoms (+/- 7.7 ac)
- Pasture/Field (+/- 10.6 ac)
- Public Road (+/- 0.5 ac)
- Home Site/Yard (+/- 1.3 ac)

#03579 Hwy 7 East

- Hardwood, Bottoms (+/- 25.9 ac)
- Pasture/Field (+/- 30.5 ac)
- Swamp/Wetland (+/- 5.6 ac)

Railway
 Woods_Roads
 Streets/Roads
RTTYP
 County Road
 State Hwy
 US Hwy
 Interstate
 County
 Township/Range
 Section
 Ponds/Lakes
 Stream/River
 City_Limits
 Public Land
 03589_Tract
 03579_Tract