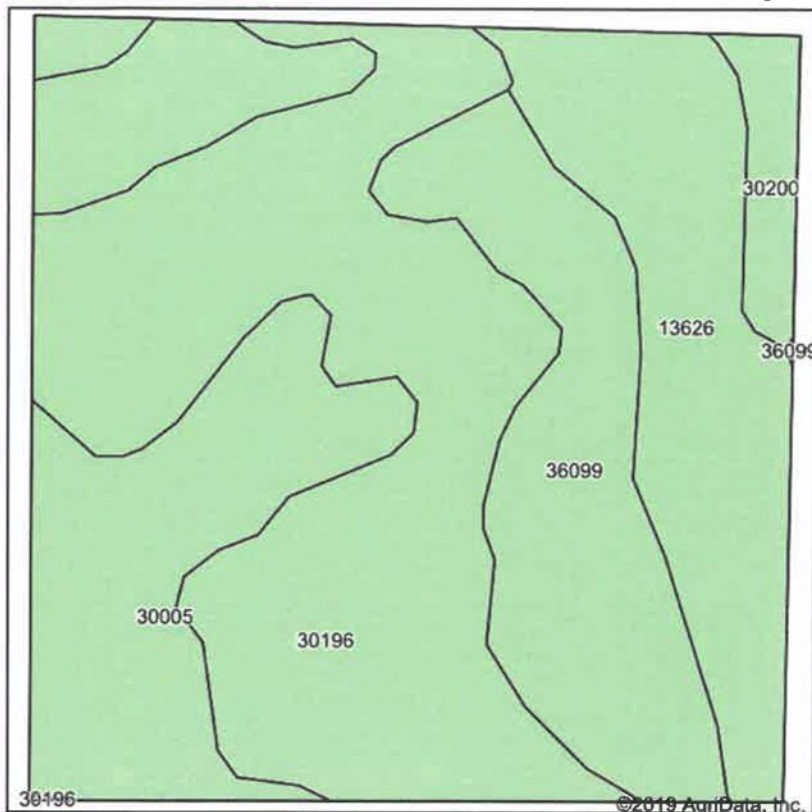
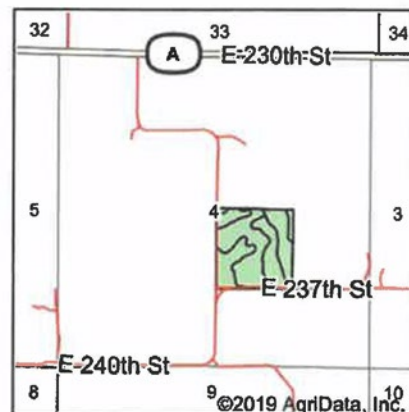


Soils Map



Soils data provided by USDA and NRCS.



State: **Missouri**
 County: **Harrison**
 Location: **4-64N-26W**
 Township: **Trail Creek**
 Acres: **40.17**
 Date: **6/18/2019**

United
Country
NELSON REAL ESTATE

Maps Provided By


 CUSTOMER ONLINE MAPPING
 © AgriData, Inc 2019 www.AgriDataInc.com



Area Symbol: MO081, Soil Area Version: 21

| Code | Soil Description | Acres | Percent of field | Non-Irr Class *c | Common bermudagrass | Caucasian bluestem | Warm season grasses | Alfalfa hay | Orchardgrass red clover | Tall fescue | |
|-------------------------|---|-------|------------------|------------------|---------------------|--------------------|---------------------|-------------|-------------------------|-------------|------------|
| 30196 | Shelby clay loam, 9 to 14 percent slopes, severely eroded | 15.71 | 39.1% | Ive | | | | | | | |
| 30005 | Adair loam, 3 to 9 percent slopes | 9.02 | 22.5% | IIle | 7 | 8 | 8 | 5 | 8 | 7 | |
| 13626 | Nodaway silt loam, 1 to 3 percent slopes, occasionally flooded | 7.16 | 17.8% | IIw | 7 | | | 9 | | 8 | |
| 36099 | Zook-Colo silty clay loams, 1 to 3 percent slopes, frequently flooded | 7.14 | 17.8% | IIIw | 8 | | | 9 | | 7 | |
| 30200 | Shelby loam, 9 to 14 percent slopes | 1.14 | 2.8% | IIIe | | | | | | 8 | |
| Weighted Average | | | | | | 4.2 | 1.8 | 5 | 1.1 | 4.5 | 4.4 |

*c: Using Capabilities Class Dominant Condition Aggregation Method