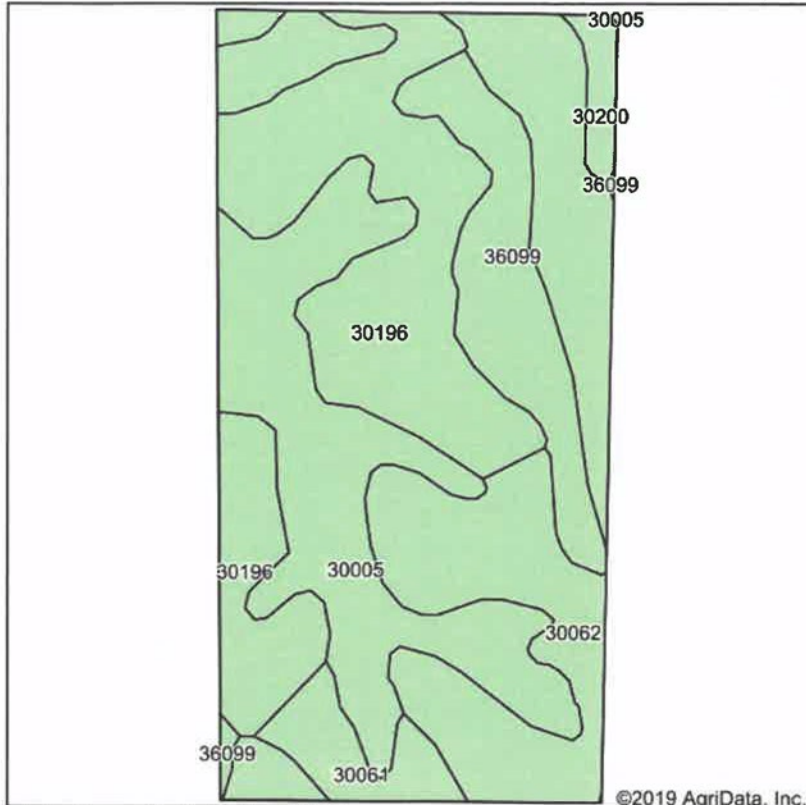
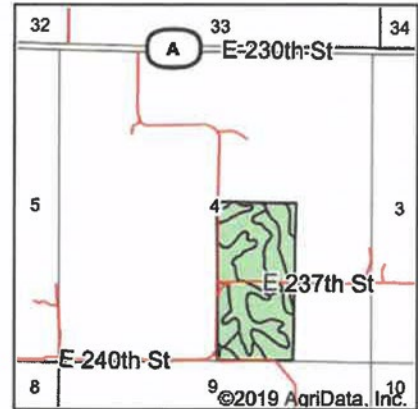


Soils Map



Soils data provided by USDA and NRCS.

©2019 AgriData, Inc.



State: **Missouri**
 County: **Harrison**
 Location: **4-64N-26W**
 Township: **Trail Creek**
 Acres: **80.03**
 Date: **6/18/2019**

United Country
 NELSON REAL ESTATE

Maps Provided By

surety
 CUSTOMIZED ONLINE MAPPING
 © AgriData, Inc. 2019 www.AgriDataInc.com



Area Symbol: MO081, Soil Area Version: 21

Code	Soil Description	Acres	Percent of field	Non-Irr Class *c	Common bermudagrass	Caucasian bluestem	Warm season grasses	Alfalfa hay	Orchardgrass red clover	Tall fescue
30196	Shelby clay loam, 9 to 14 percent slopes, severely eroded	23.26	29.1%	IVe						
30005	Adair loam, 3 to 9 percent slopes	20.85	26.1%	IIIe	7	8	8	5	8	7
30062	Gara loam, 9 to 14 percent slopes	14.11	17.6%	IVe						
36099	Zook-Colo silty clay loams, 1 to 3 percent slopes, frequently flooded	8.95	11.2%	IIIw	8			9		8
13626	Nodaway silt loam, 1 to 3 percent slopes, occasionally flooded	8.19	10.2%	IIw	7			9		8
30061	Gara loam, 5 to 9 percent slopes	3.31	4.1%	IIIe	7	8	8	7	7	7
30200	Shelby loam, 9 to 14 percent slopes	1.36	1.7%	IIIe						
Weighted Average					3.7	2.4	4.3	1.6	4	3.8

*c: Using Capabilities Class Dominant Condition Aggregation Method