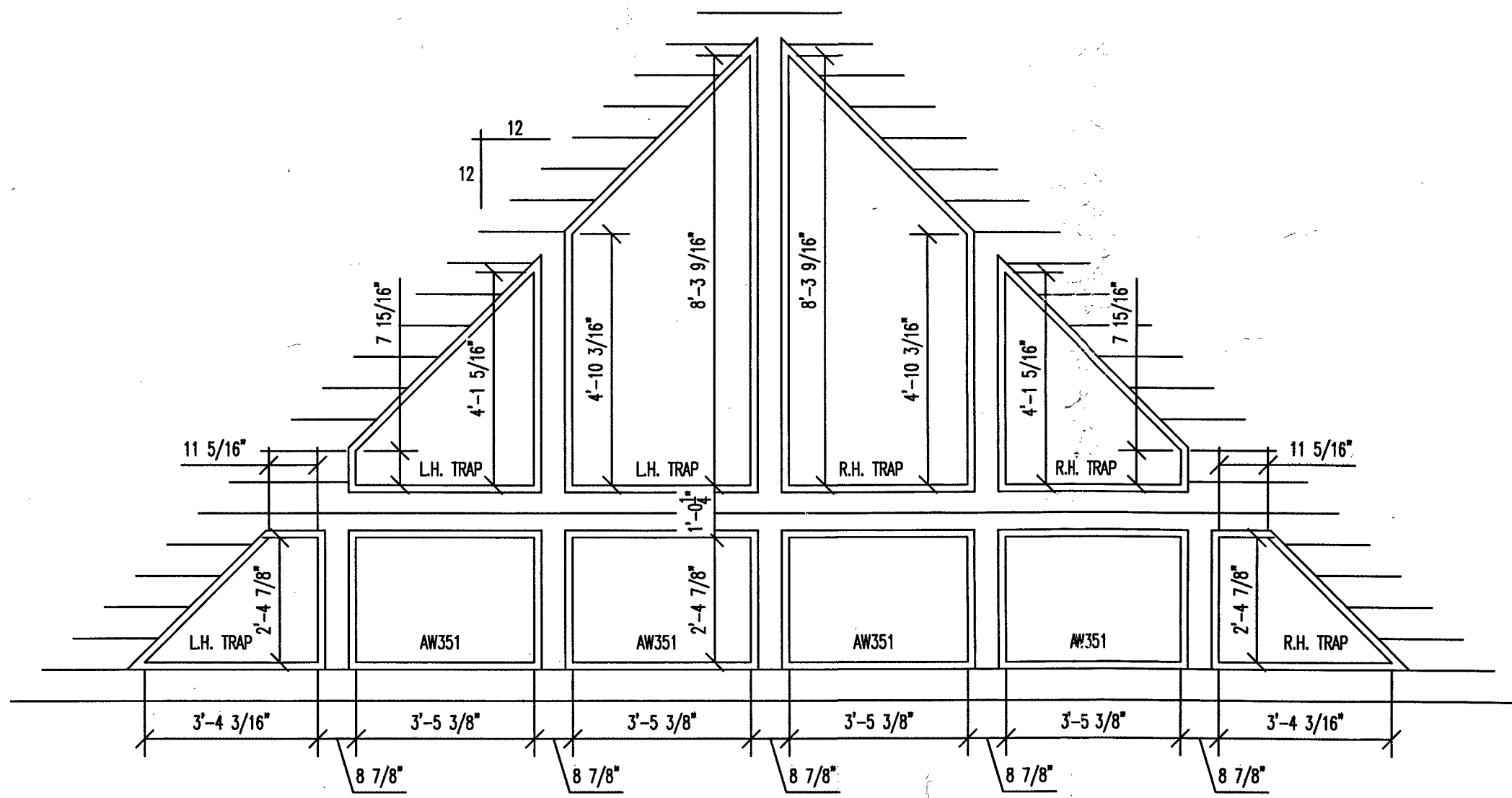


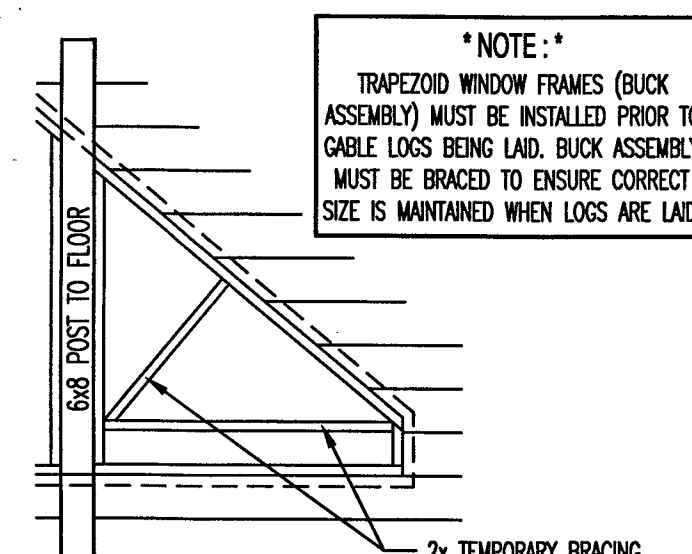
CENTER SECTION WINDOW & DOOR SCHEDULE				
MODEL #	QTY	ROUGH OPENING	DESCRIPTION	COMMENTS
FC-60(30)	1	3'-2 1/2" x 6'-10 1/2"	THERMA-TRU FIBER-GLASS ENTRY DOOR	BY OTHERS
FWH068APLR w/2-24" SL /CUSTOM ARCHTOP	1	10'-1 3/8" x 8'-8-3/4"	ANDERSEN FRENCHWOOD HINGED PATIO DOOR w/2-24" SL	
TW3046	1	3'-2 1/8" x 4'-8 7/8"	ANDERSEN DOUBLE-HUNG WINDOW	
TW3046-2	1	6'-4" x 4'-8 7/8"	ANDERSEN TWIN DOUBLE-HUNG WINDOW	
P5060 (1)	1	5'-0 3/8" x 6'-0 3/8"	ANDERSEN CASEMENT PICTURE WINDOW (TEMPERED)	
P5540	1	5'-5 3/8" x 4'-0 1/2"	ANDERSEN CASEMENT PICTURE WINDOW	
AW351	4	3'-5 3/8" x 2'-4 7/8"	ANDERSEN AWNING WINDOW	
L.H. TRAP	1	SEE CUSTOM WINDOW DETAIL	ANDERSEN FLEXI-FRAME WINDOW	
L.H. TRAP	1	SEE CUSTOM WINDOW DETAIL	ANDERSEN FLEXI-FRAME WINDOW	
L.H. TRAP	1	SEE CUSTOM WINDOW DETAIL	ANDERSEN FLEXI-FRAME WINDOW	
R.H. TRAP	1	SEE CUSTOM WINDOW DETAIL	ANDERSEN FLEXI-FRAME WINDOW	
R.H. TRAP	1	SEE CUSTOM WINDOW DETAIL	ANDERSEN FLEXI-FRAME WINDOW	
R.H. TRAP	1	SEE CUSTOM WINDOW DETAIL	ANDERSEN FLEXI-FRAME WINDOW	
2868	4	2'-10" x 6'-10"	Y GROOVE WHITE PINE HINGED DOOR	

FUTURE WING AREAS WINDOW & DOOR SCHEDULE				
MODEL #	QTY	ROUGH OPENING	DESCRIPTION	COMMENTS
SE-510(30)	1	3'-1" x 6'-9 3/8"	THERMA-TRU FIRE/STEEL DOOR	BY OTHERS
16'x8' GARAGE	1	16'-0" x 8'-0"	STEEL INSULATED OVERHEAD GARAGE DOOR	BY OTHERS
TW28210	2	2'-10 1/8" x 3'-0 7/8"	ANDERSEN DOUBLE-HUNG WINDOW	BY OTHERS
TW210310	2	3'-0 1/8" x 4'-0 7/8"	ANDERSEN DOUBLE-HUNG WINDOW	BY OTHERS
TW30310	4	3'-2 1/8" x 4'-0 7/8"	ANDERSEN DOUBLE-HUNG WINDOW	BY OTHERS
TW30310 (1)	1	3'-2 1/8" x 4'-0 7/8"	ANDERSEN DOUBLE-HUNG WINDOW (TEMPERED)	BY OTHERS
3068	1	3'-2" x 6'-10"	Y GROOVE WHITE PINE HINGED DOOR	BY OTHERS
2868	1	2'-10" x 6'-10"	Y GROOVE WHITE PINE HINGED DOOR	BY OTHERS



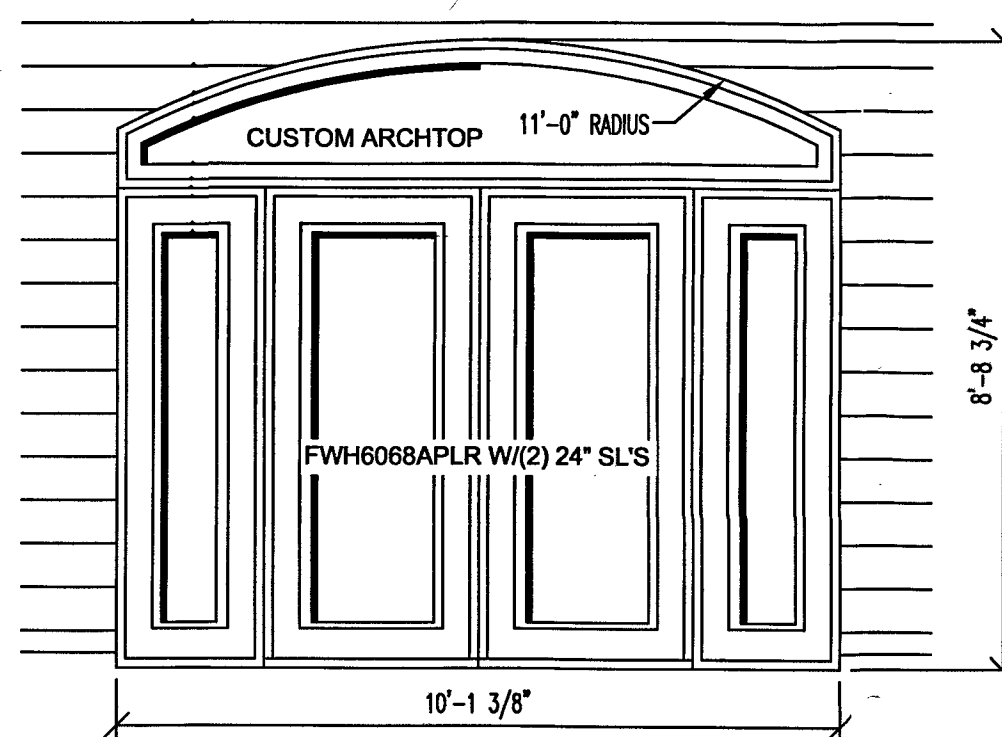
TRAPEZOID WINDOW DETAILS

3/8" = 1'-0"
 * NOTE: WINDOW DIMENSIONS SHOWN ARE FOR ROUGH OPENINGS (FROM BUCK TO BUCK)
 ** VIEWED FROM OUTSIDE OF HOME LOOKING INSIDE **
 * TRAP DIAGRAM SUBJECT TO ADJUSTMENT PENDING *
 FINAL CONSTRUCTION PRINTS



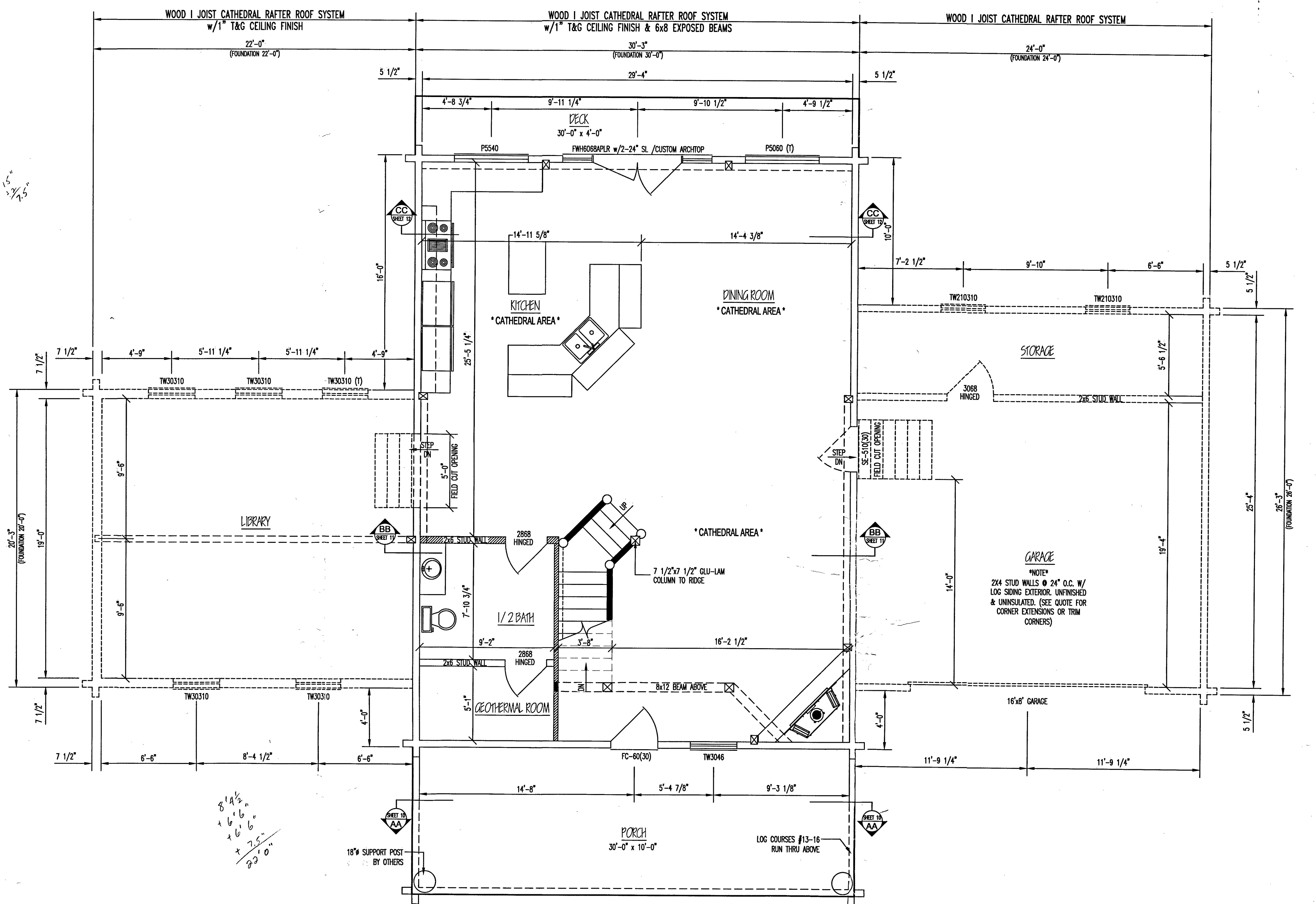
BRACING DETAIL

NOT TO SCALE
 * NOTE:
 SOME BUILDERS PREFER TO SHEET ASSEMBLY SOLID WITH PLYWOOD OR OSB TO MAINTAIN SIZE OF ASSEMBLY AND TO OFFER SOME WEATHER PROTECTION UNTIL WINDOWS ARE INSTALLED.



CUSTOM WINDOW DETAILS

3/8" = 1'-0"
 * NOTE: WINDOW DIMENSIONS SHOWN ARE FOR ROUGH OPENINGS (FROM BUCK TO BUCK)
 ** VIEWED FROM OUTSIDE OF HOME LOOKING INSIDE **
 * CUSTOM DIAGRAM SUBJECT TO ADJUSTMENT PENDING *
 FINAL CONSTRUCTION PRINTS



1st LEVEL FLOOR PLAN

- TOTAL FLOOR SPACE = 1,200 SQ. FT.
- TOTAL PORCH SPACE = 300 SQ. FT.
- TOTAL GARAGE SPACE = 624 SQ. FT.
- TOTAL LIBRARY SPACE = 440 SQ. FT.
- INDICATES BEARING WALLS

INTERIOR FASTENERS	
- 3/8" x 8" LAGS:	PARTITION WALLS TO LOG WALL CONNECTION
- 16d CEMENT COATED SINKERS:	CONVENTIONAL FRAMING
- 10d FINISH NAILS:	INTERIOR DOOR JAMBS
- 8d FINISH NAILS:	INTERIOR TRIM
- 6d FINISH NAILS:	1x8 T&G WALL FINISH

FLOOR PLAN GENERAL NOTES	
- GENERAL SPECIFICATIONS:	SEE COVERSHEET.
- DETAILS:	REFER TO APPLICABLE DETAILS FOR FLOOR PLAN INFORMATION
- INTERIOR PARTITION HEIGHTS:	REFER TO SECTIONS FOR APPROPRIATE LOG COURSE HEIGHT. FINAL HEIGHT DETERMINED BY ACTUAL LOG COURSE STACK HEIGHT.
- MULLED WINDOWS:	WINDOWS MAY NEED MULLED ON SITE DUE TO SIZE OR TYPE.
- MATERIALS INCLUDED:	ALL DETAILS PERTAINING TO MATERIAL NOT SUPPLIED BY CLC MUST BE VERIFIED PRIOR TO ACTUAL CONSTRUCTION. SEE APPROPRIATE QUOTE AND ALL APPLICABLE CHANGE ORDERS FOR MATERIALS TO BE SUPPLIED BY CLC.

"At Country Log Cabins, we are dedicated to the highest standard of excellence for our customers. As part of the Country Log Cabins organization, I am proud to have worked on the plans for your home. Should we fail to meet your expectations, please notify your Log Home Representative as your satisfaction is our highest priority. We look forward to helping you make your log home dream a reality!"
 Drawn by: *Jan Kinnear*

COPYRIGHT NOTICE © Copyright 2009 by Country Log Cabins
DO NOT SCALE DRAWING - CONTRACTOR TO VERIFY ALL DIMENSIONS IN FIELD

RESIDENCE FOR: BOBBY BARY		FINAL DATES: 9/1/09
PLAN NAME: 1st LEVEL FLOOR PLAN		FINAL DATE: 8/12/09
PRELIMINARY DATES: 8/12/09	FINAL PRELIM. DATES: ---	FINAL DATE: 9/1/09
DRAWN BY: KH/SR	DRAWN BY: ---	DRAWN BY: JLK
FINAL REV. DATES: ---	MODEL: ---	SCALE: 1/4" = 1'-0"
DRAWN BY: ---	MODEL: CUSTOM	PROJ. NO. BARBOBO-09A-831
SALES REP: ---	DEALER: KEVIN FOWLER	DWG. NO. CLC-350-2
		SHEET NO. 3 OF 12